



Fountain bowl, optional cover plate, optional gooseneck bottle filler and standard access panel shown in #4 satin standard stainless steel finish with "Hands Free" sensors, label and bubbler in mirror finish

Dimensions in drawing subject to options selected.

### Features

- 10½" diameter, 16 ga. fountain bowl
- Long-lasting, durable stainless steel water dispenser, promotes refilling of water bottles
- "Hands Free" sensors help prevent germ transmission and water waste
- ADA compliant fountain length for wheelchair access
- One-piece cover plate with no seams or exposed edges
- Manufactured with lead-free materials
- Integral drain in bowl for ease of cleaning
- ¼" steel support arm and wall bracket capable of supporting 500 lbs.
- Matching cover plate finishes including unlimited powder coat colors
- Options include "Hands Free" bottle fillers, bottle counters, finishes, bubbler valves and much more...

### Recommended Add-ons

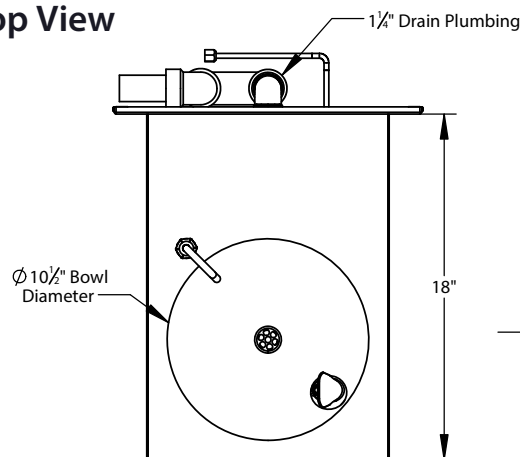
#### Chiller

Equip your fountain with a Filtrine point-of-use or remote chiller to cool your drinking water. We can help you select the most economical chiller model to fit your demand.

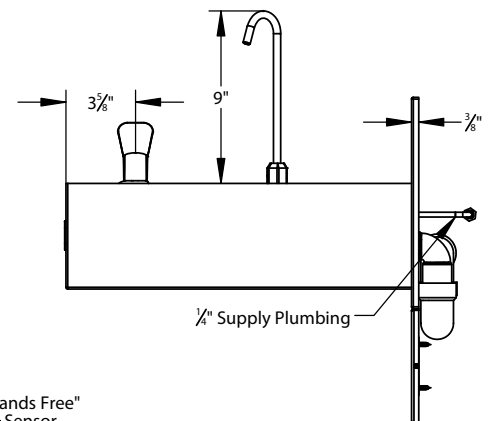
#### Purifier

Ensure that your drinking water is of the highest quality by adding a Filtrine Taste Master® purifier cabinet underneath the fountain or a remote purification system serving all fountains in the building.

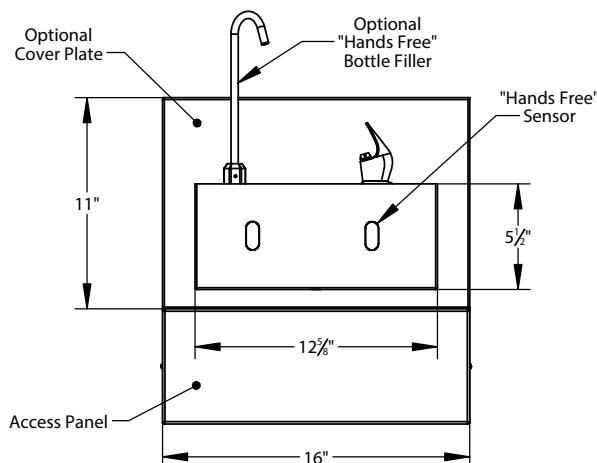
### Top View



### Side View



### Front View



"Hands Free" Components Include:

- "Hands Free" Sensor
- Electrical Box
- Battery Pack\*
- Control Module
- Cartridge Regulator

\* [4] lithium AA batteries included

*For options, finishes and more see page 2*

## Access Panel

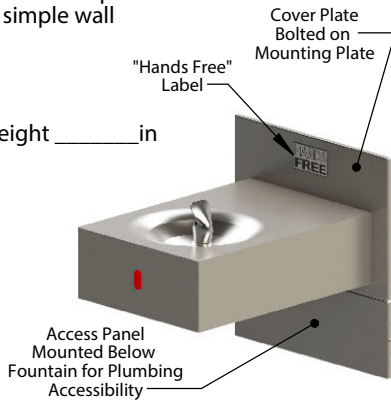
6" Standard Height or Specify: \_\_\_\_\_ in

- Included with all "Hands Free" fountains
- Material, finish and width to match cover plate
- Includes mounting brackets for simple wall installation

### Optional Cover Plate

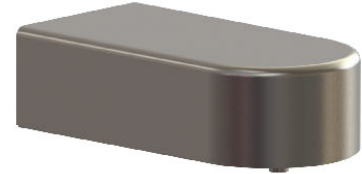
11" Standard Height  Other Height \_\_\_\_\_ in

### Labels (Choose one or both [S])



### Optional "Hands Free" Vandal Proof Bottle Filler

- Mounted 10½" above lowest fountain bowl.
- Comes standard with bottom security panel assembled with tamper proof screws.
- Requires larger cover plate and mounting plate.
- Supply plumbing and mounting tongue for filler provided by Filtrine.



### Optional Tamper-Resistant Screw

Tamper-Resistant Set Screw  
 Secures Bubbler to Fountain



### Optional "Hands Free" Gooseneck Bottle Filler



**Model CC-153-STV**

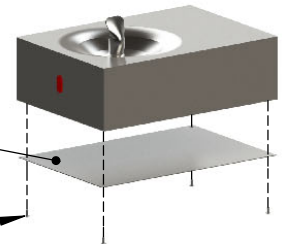
- Mounted on deck of lowest fountain bowl
- "Hands Free" sensor features automatic shutoff with [30] second delay
- Supply plumbing and mounting fitting for filler provided by Filtrine

Tamper resistant screws prevent vandalism

### Optional Security Panel

16 ga. Plate Secured with Tamper-Resistant Screws for Added Security

4x-Tamper Resistant Screws



## Fountain Finish (Check One)

Satin Stainless [S]  Mirrored Stainless  Powder Coat \_\_\_\_\_  Satin Bronze  Mirrored Bronze  Statuary Bronze  Oil-Rubbed Bronze

## Optional Cover Plate Finish (Check One)

Satin Stainless [S]  Mirrored Stainless  Powder Coat \_\_\_\_\_  Satin Bronze  Mirrored Bronze  Statuary Bronze  Oil-Rubbed Bronze

### Stainless



**Satin Stainless Steel [S]**



**Black Powder Coat**

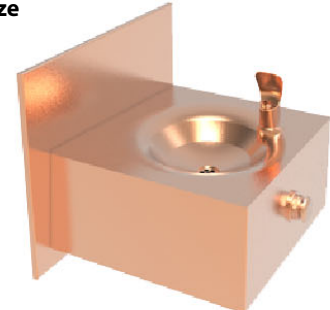


**Mirrored Stainless Steel**



**White Powder Coat**

### Bronze

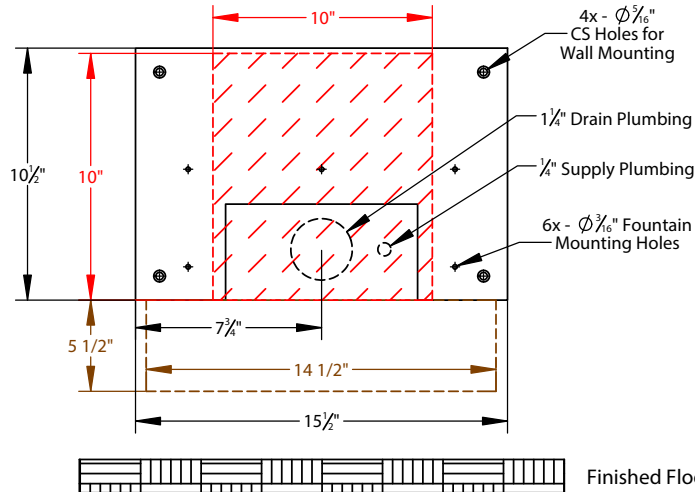


**Oil Rubbed Bronze**



**Statuary Bronze**

## Mounting Plate Details (Front)



**Approximate Rough-In Dimensions (hatched, left)**

Model	Height	Width
Standard Plate	10"	10"

**Approximate Access Panel Rough-In Dimensions (outlined, left)**

Model	Height	Width
Standard Panel	5 1/2"*	14 1/2"

\*If height specified, rough-in height will be 1/2" less than specified height

All views shown are for typical installation of 90-WC-HF. Views, dimensions and diagrams may change for specific installation requirements.

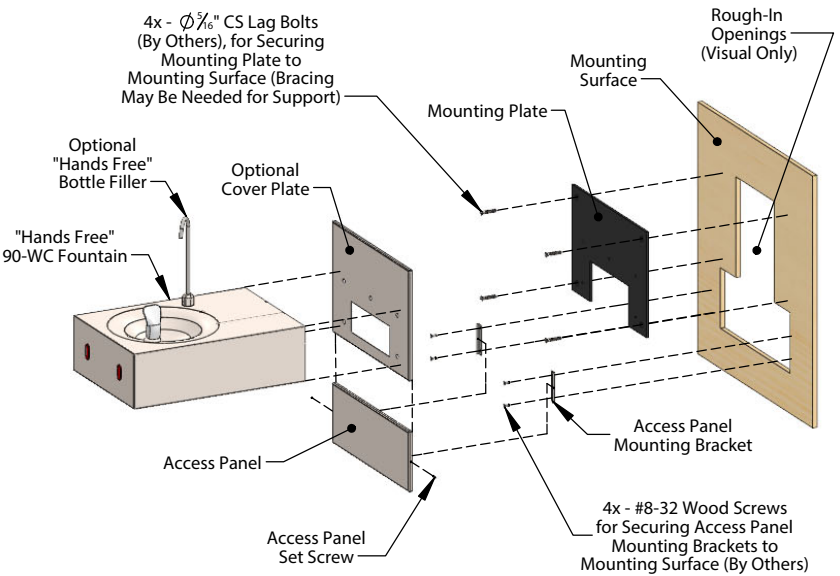
26" Minimum From Bottom of Mounting Plate to Finish Floor  
 Equals 34 1/4" to Bubbler Spout and 47" to Bottle Filler Spout



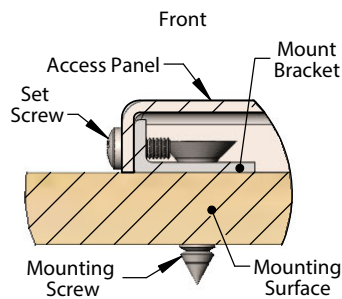
## Exploded On-Wall Installation View 90-WC-HF with Access Panel

### Typical Assembly Instructions (Always Install Per Local Code)

1. Cut rough opening for fountain and access panel (if included) as shown above.
2. Run drain piping to the rough opening and install drain trap per local code
3. Run supply water lines to bottom of rough opening.
4. Fasten mounting plate over rough opening with 5/16" countersunk lag bolts with bottom of plate 26" above the floor to meet ADA fountain height requirements.
5. Install cover plate over the mounting plate.
6. If included, measure, mark and install the access panel "L" brackets with #8-32 screws and align access panel to cover plate with alignment pins.
7. Install the model 90-WC-HF fountain using screws provided.
8. Connect drain line to slip coupling and building supply plumbing to 1/4" fountain plumbing. Install AA batteries.
9. Activate sensor to test water flow. Adjust flow rate by turning the white screw head on the regulator cartridge (turn clockwise to decrease flow, counterclockwise to increase flow).
10. To adjust sensor distance, turn the yellow phillips head screw on control module (turn clockwise to lengthen distance).



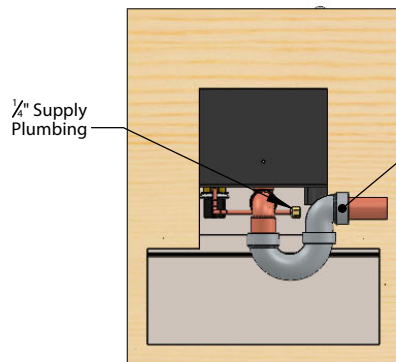
## Access Panel Mounting Brackets Installation Details



**Detailed View of Top of Mounting Bracket Assembly**

## Typical Drain Plumbing Detail (In-Wall Plumbing Provided By Others, Install Per Local Code)

**Front View (Cropped)**



**Top View (Cropped)**

