

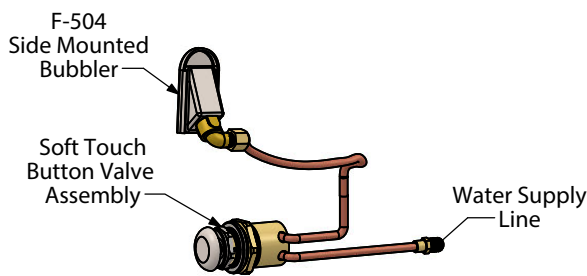
F-504 Side Mounted Bubbler Installation Assembly and Parts List



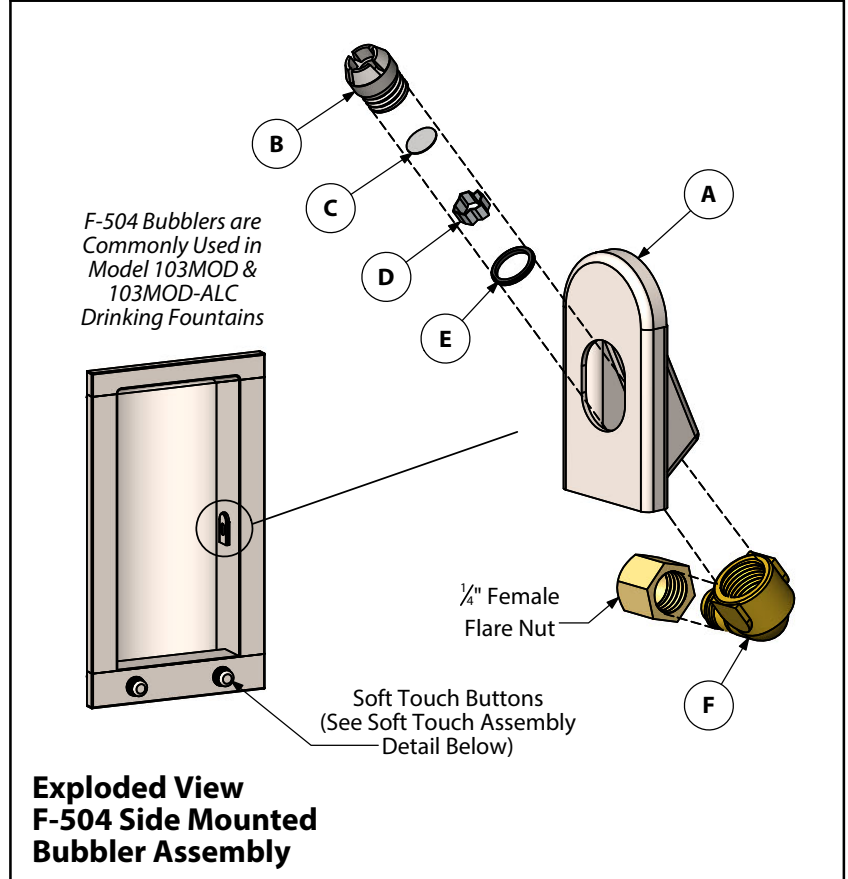
Side Mounted Bubbler Installation

1. Before connecting the makeup water line to the fountain, open the supply line stop valve enough to give a good rush of water into a bucket. Repeat several times until the water runs clear. Start with the nearest fountain and progress one by one to the furthest down the supply line.
2. When replacing a flow regulator the line should be flushed (as outlined above) to ensure proper operation of the new regulator.
3. After flushing, install the regulator into the soft touch valve and snug the retaining ring gently. It should be tightened only enough to make a water seal. Turn the supply stop valve fully on and check for leaks. Push the button on the regulator and check the stream height.
4. Adjustments to the stream height should be slight (about 1/8 turn at a time). Turn clockwise to reduce flow and counter clockwise to increase flow. If the stream height does not change, check for flow restrictions elsewhere (i.e.: stop valve not completely open, loose washer in stop valve, pinched piping, pipe dope or solder in piping, debris in screen at base of bubbler or spout). Air in the water can also cause erratic flow. Once the stream height is satisfactory, the finished hex nut and push button can be screwed onto the remaining threads of the retaining ring. Snug the hex nut with a padded wrench.

Soft Touch Button Assembly



See SOFT TOUCH INSTALL [EB] for valve assembly part numbers.



DRAWING REFERENCE	DESCRIPTION	ORDER PART NO.
ASSEMBLY	F-504 SIDE MOUNTED BUBBLER ASSEMBLY	45.0294
A	SIDE MOUNT BUBBLER OUTER COVER	45.0520
B	SPOUT - CHROME	SOLD AS UNIT 45.0011
C	SCREEN - STAINLESS STEEL	
D	STREAM STRAIGHTENER - BRASS	
E	O-RING - RUBBER	15.0178
F	1/4" FPT X FL ELBOW - BRASS	

NOTE
Model F-504 bubbler is "LEAD-FREE" per Manufacturers NSF Listing to ANSI/NSF Standard 61.