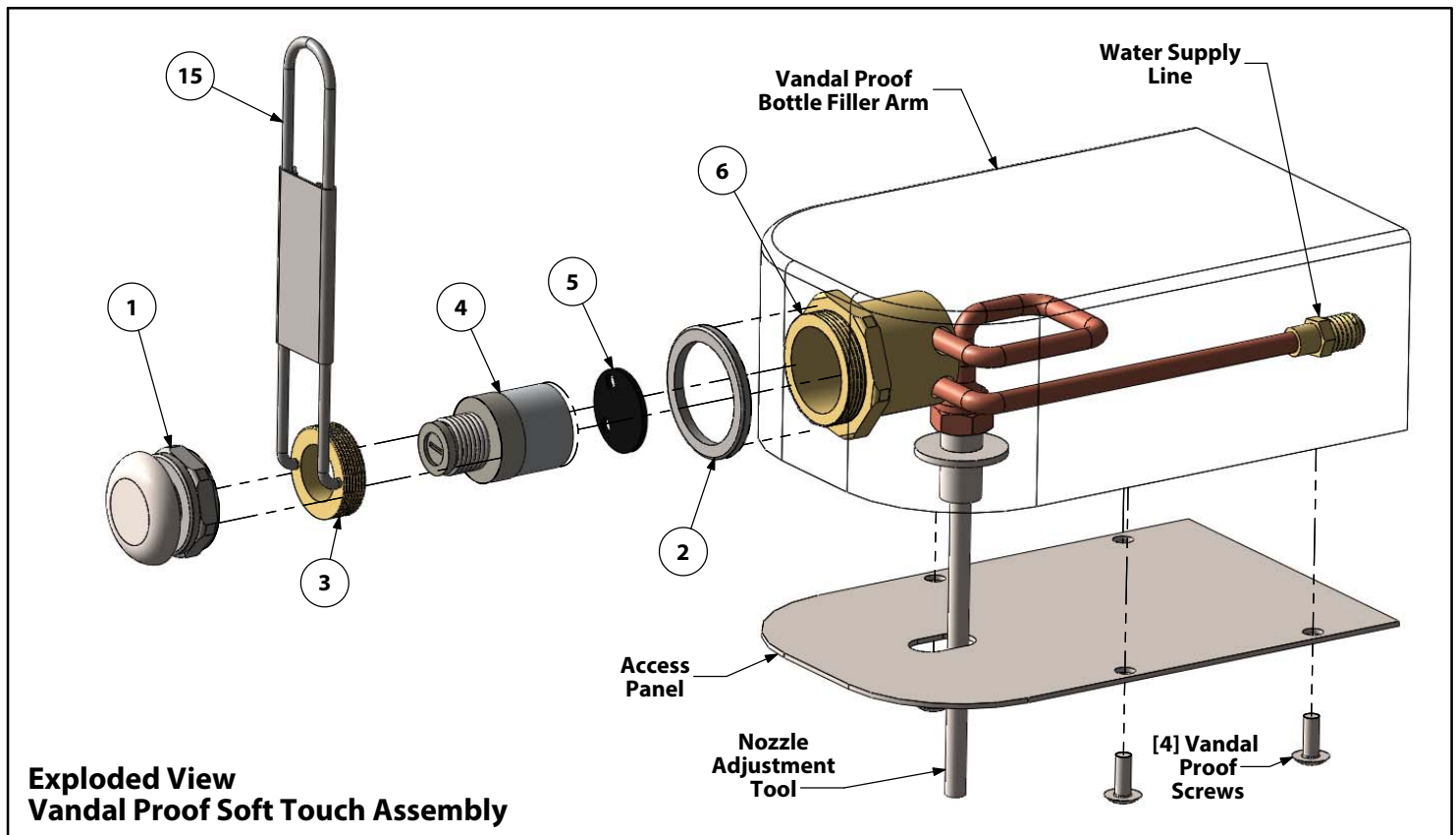


Vandal Proof Soft Touch Button Installation Assembly and Parts List



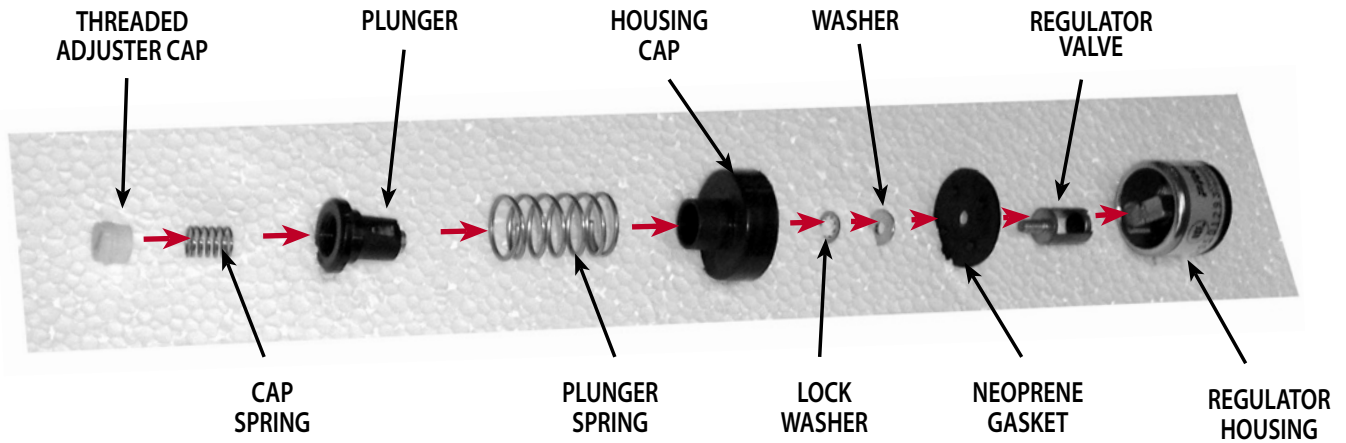
**Exploded View
Vandal Proof Soft Touch Assembly**

Cartridge Regulator Replacement Instructions

1. Remove access panel on the underside of bottle filler arm.
2. Turn off water to the fixture and depress button to drain water left in the supply line.
3. Remove soft touch button with crescent wrench.
4. Using spanner wrench or needle nose pliers, unscrew the brass regulator retaining ring.
5. Gently wiggle cartridge back and forth to free and remove it from the brass valve assembly body.
6. Check to ensure that the old neoprene seal was also removed from the valve assembly body.
7. Install new neoprene seal on the new cartridge regulator and install new assembly into the valve assembly body, ensuring inlet and outlet holes on the cartridge are lined up and the cartridge is seated properly in the valve body.
8. Reinstall the regulator retaining ring, and tighten using the spanner wrench or needle nose pliers.
9. Turn on water to fixture and test for flow and leaks by pushing plunger with flat screwdriver.
10. Reinstall access panel on the underside of bottle filler arm.
11. Insert $\frac{1}{8}$ " dia. pipe provided or small screwdriver into copper nozzle of bottle filler. Adjust the pipe towards the middle of the bowl to reduce chance of splashing.

DRAWING PART NO.	DESCRIPTION	ORDER PART NO.
1	"SOFT TOUCH" BUTTON - CHROME	45.0159
2	BUTTON TRIM RING - CHROME	45.0136
3	REGULATOR RETAINING RING - BRASS	45.0008
4	REGULATOR CARTRIDGE ASSEMBLY	45.0006
5	NEOPRENE SEAL	
6	VALVE ASSEMBLY BODY - BRASS	45.0157C
1-6	ALL ABOVE PARTS - COMPLETE SET	45.0257
15	SPANNER WRENCH	45.0017

WATER REGULATOR ASSEMBLY



TO ASSEMBLE WATER REGULATOR AFTER CLEANING

- 1 Align regulator valve inside regulator housing
- 2 Place gasket over regulator valve and housing
- 3 Place washer and lockwasher over stem of regulator valve
- 4 Place housing, plunger spring and plunger over regulator housing
- 5 Insert cap spring and screw threaded adjuster cap in place