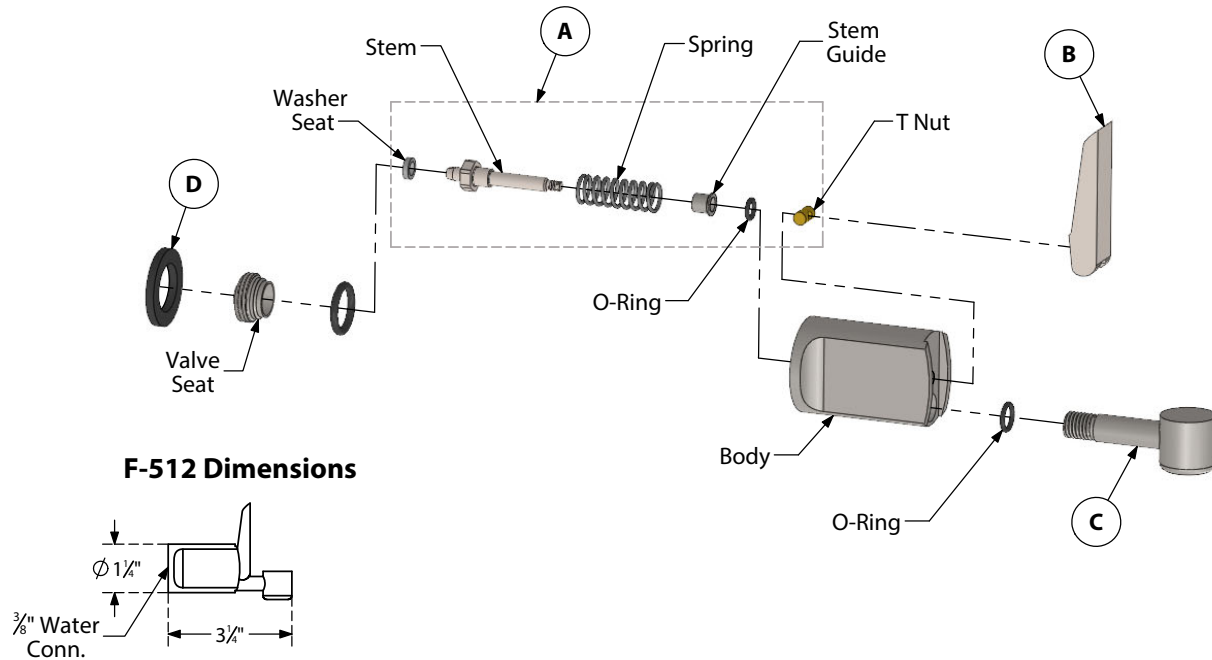
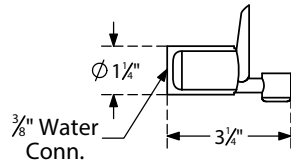


F-512 Bottle Filler Installation Assembly and Parts List

Exploded View F-512 Bottle Filler Assembly



F-512 Dimensions



Bottle Filler Installation Instructions

1. Put plumber's tape on all threaded connections of bottle filler assembly provided with drinking fountain.
2. Install mounting assembly at the $\frac{3}{4}$ " hole in the rear of the mounting bracket in tapped holes with [2] slotted round head screws provided.
3. Mount the mounting bracket to the wall or carrier with $\frac{5}{16}$ " lag screws. The flare connection of assembly should line up with the plumbing opening of the drinking fountain for connection to water supply piping.
4. Install the cover plate over the mounting bracket for a friction fit and screw on the bottle filler body to the threaded adapter. Use the flat rubber washer provided for a tight seal and insure the stainless steel lever is straight up.
5. Turn on the water to the valve and insure the flow stream will fill a 12oz bottle within 15 seconds.
6. If lever valve is sticking or lever is loose, remove the spout by unscrewing it from the body. Slide the lever off the flow adjuster and turn the flow adjuster nut clockwise until tight. Back the flow adjuster nut off $1\frac{1}{2}$ " turns before sliding the lever back in place. The lever should now be properly adjusted so it doesn't stick.

WARNING

Do not pull the lever handle forward in the vertical position as this may cause the valve to go out of alignment.

DRAWING REFERENCE	DESCRIPTION	ORDER PART NO.
F-512 COMPLETE ASSEMBLY	STAINLESS STEEL ASSEMBLY	45.0172SS
	MIRRORED BRONZE ASSEMBLY	45.0372
	STATUARY BRONZE ASSEMBLY	45.0472
	SATIN BRONZE ASSEMBLY	45.0572
	OIL RUBBED BRONZE ASSEMBLY	45.0672
A	STEM ASSEMBLY KIT	45.0271
B	POLISHED S/S LEVER HANDLE	45.0187
C	F-512 S/ S BOTTLE FILLER SPOUT	45.0198
D	MOUNTING WASHER - RUBBER	45.0016