



"Hands Free" Drinking Water Equipment Guide



**"Hands Free" Model B103
Bottle Filling Stations**
(Shown in stainless steel in
The Water Cube in the
Pittsburgh Cultural District)

Filtrine offers a wide variety of "Hands Free" drinking water equipment in stainless steel or bronze in different finishes, and a wide selection of powder coat colors

Why Specify Filtrine “Hands Free” Equipment

Innovation is part of Filtrine’s legacy (see the history of Filtrine below). Industry firsts, the models shown here offer fully hands free operation and combine the popular Filtrine bottle filling station with the traditional drinking fountain. To add the hands free operation to any fountain, specify the Filtrine “Hands Free” Retrofit Kit.

**EASY TO
CLEAN!**

Constructed from 14 and 16 ga. stainless steel or bronze

“Hands Free” sensor*

This model fits in a 4” wall

Integral drain for ease of cleaning

Access panel for access to maintenance

100% metallic waterways for improved product quality and longevity

Optional chiller/purifier units offer superior cooling capabilities, while providing ample storage for additional water during peak demand

Tamper-proof splash guard welded to cover plate

What Sets Filtrine Apart

- Family-owned, with over 100 years of experience as a leader in the drinking water industry
- 100% made in the US with no less than 75% US components
- Units are built to suit
- Most durable equipment on the market, often outlasting the buildings they were installed in

“Hands Free” sensor*

Model B103-107-16-MOD-HF
(Illustration showing satin finish stainless steel and standard options)

**Uses [4] AA battery power for up to 5 years of typical use.*

Filtrine’s History of Innovation

In 1901, inventor George Kneuper patented a new filter medium which used molecular attraction to remove microscopic particles from water. He named this material “Filtrine” and founded the Filtrine Manufacturing Company in a small brick building in Brooklyn, NY. Mr. Kneuper’s filters were soon installed in many of the new high-rise office buildings in Manhattan.

In 1918, Mr. Kneuper sold the company to Charles Hansel, a successful civil engineer in New York City. Under the leadership of his son, Charles F. Hansel, Filtrine produced one of the first electric coolers in 1925 and introduced the storage-type cooling tank still featured on all Filtrine chillers. The coil-in-tank evaporator proved to be virtually freeze-proof.

In the 1950’s, the next generation of Hansels, John P. and Charles F. Jr., moved the company into larger quarters in Waldwick, NJ. There they introduced the first stainless steel drinking water fountains. One model, the 107-16, was designed in collaboration with a leading architect, Minoru Yamasaki, who designed the World Trade Center.

Filtrine is now located in a modern 100,000 square foot facility in Keene, NH. The current generation of Hansels are committed to continuing a tradition of quality products with a focus on sustainability and built in the U.S.

"Hands Free" Bottle Filling Stations, Drinking Fountains and Combos

Choose from a stand alone bottle filling station or the combo drinking fountain/bottle filling station.)



Model B103-RB-HF

(Shown in stainless steel round back style with satin finish and standard options)



Model B103-107-16-MOD-HL-HF

(Illustration showing satin finish stainless steel and standard options including the new style F-503 bubbler)

Stainless Steel or Bronze Finishes

Materials include stainless steel and bronze. Models can be customized to meet any building requirement.

STAINLESS STEEL/BRONZE FINISHES



Satin (Both)



Statuary Bronze



Mirror (Both)



Oil Rubbed Bronze

SAMPLE POWDER COAT COLORS



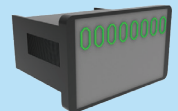
Features and Options

Select from a "Hands Free" or "Waving Hand" label.

Options include a bottle counter or a bottle counter label.



"Hands Free" Label



Bottle Counter



"Waving Hand" Label



Bottle Counter Label

"Hands Free" Retrofit Kits – Make Any Fountain Touchless!



Model HF-RFK**

(Illustration showing with satin finish stainless steel but the access panel can be finished to match any fountain)



Model HF-RFK-HL**

(Illustration showing satin finish stainless steel but the access panel can be finished to match any fountain)



Model HFBF-RFK**

(Shown in satin finish stainless steel but can be finished and sized to match any fountain)



Model HF-90-RFK

Unscrew from plumbing and slide off old fixture, replace with new and re-attach.

(Illustration showing optional "Hands Free" bottle filler and satin finish stainless steel but can be finished to match any fountain)

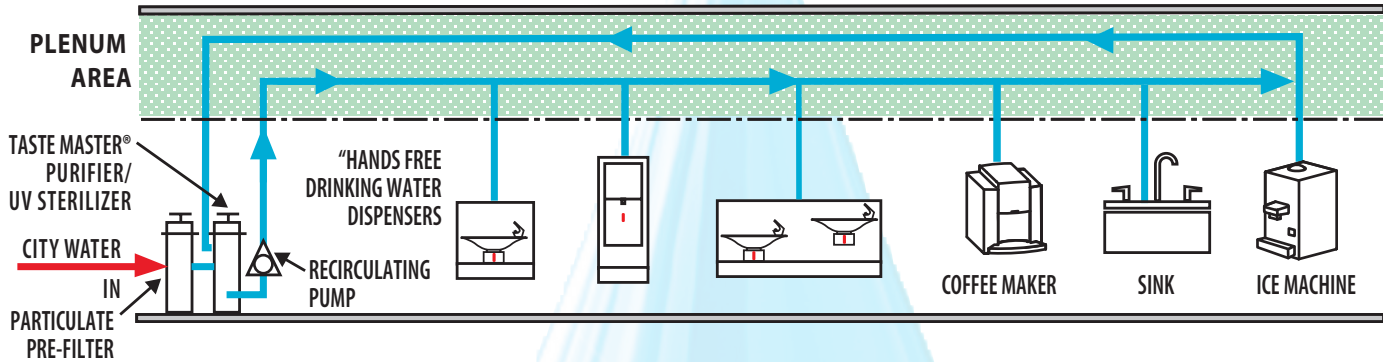
****Professional installation required.**

Point of Entry Drinking Water Filtration Systems with UV Sterilizer for Infection Control

Filtrine's secure filtered dedicated insulated piping loop is located in plenum above hung ceiling, powered by Filtrine's recirculating pump. It replaces the need for multiple filters saving in maintenance costs.



Removes 0.5 micron particles, lead, organic tastes/odors, chlorine taste/odor, destroys bacteria and organic growth with Filtrine particulate pre-filter and Taste Master purifier.



Filtrine Craftsmanship

All of Filtrine's drinking water dispensers and chillers are made in the US by highly trained production staff. They have years of experience, take pride in their work, and are dedicated to building equipment designed to their customers' specifications.

Filtrine's drinking water equipment has been installed in the White House, the United Nations Building, National Gallery of Art, Apple flagship stores and in thousands of other fine public and commercial buildings around the world, often outlasting the structures they were installed in.



Warranty

All of Filtrine's products are covered by warranty to be free from defects in material and workmanship. Filtrine is also committed to product sustainability and will repair or recondition its equipment long after the initial warranty has expired.

Headquarters

Filtrine Manufacturing Company

15 Kit Street • Keene, NH 03431 USA • Tel: 603-352-5500 • Fax: 603-352-0330
drinkingwater@filtrine.com • www.Filtrine.com

