

F-501 and F-501-VP Water Bubbler Installation Assembly and Parts List



Bubbler Installation

1. Before connecting the makeup water line to the fountain, open the supply line stop valve enough to give a good rush of water into a bucket. Repeat several times until the water runs clear. Start with the nearest fountain and progress one by one to the furthest down the supply line.
2. When replacing a flow regulator the line should be flushed (as outlined above) to ensure proper operation of the new regulator.
3. After flushing, install the regulator (see steps below) and snug the retaining ring by hand. It should be tightened only enough to make a water seal. Turn the supply stop valve fully on and check for leaks. Push the button on the regulator and check the stream height.
4. Adjustments to the stream height should be slight (about 1/8 turn at a time). Turn clockwise to reduce flow and counter clockwise to increase flow. If the stream height doesn't change, check for flow restrictions elsewhere (i.e. stop valve not completely open, loose washer in stop valve, pinched piping, pipe dope or solder in piping, debris in screen at base of bubbler or spout). Air in the water can also cause erratic flow. Once the stream height is satisfactory, the finished hex nut and push button can be screwed onto the remaining threads of the retaining ring. Snug the hex nut with a padded wrench.

Regulator Installation

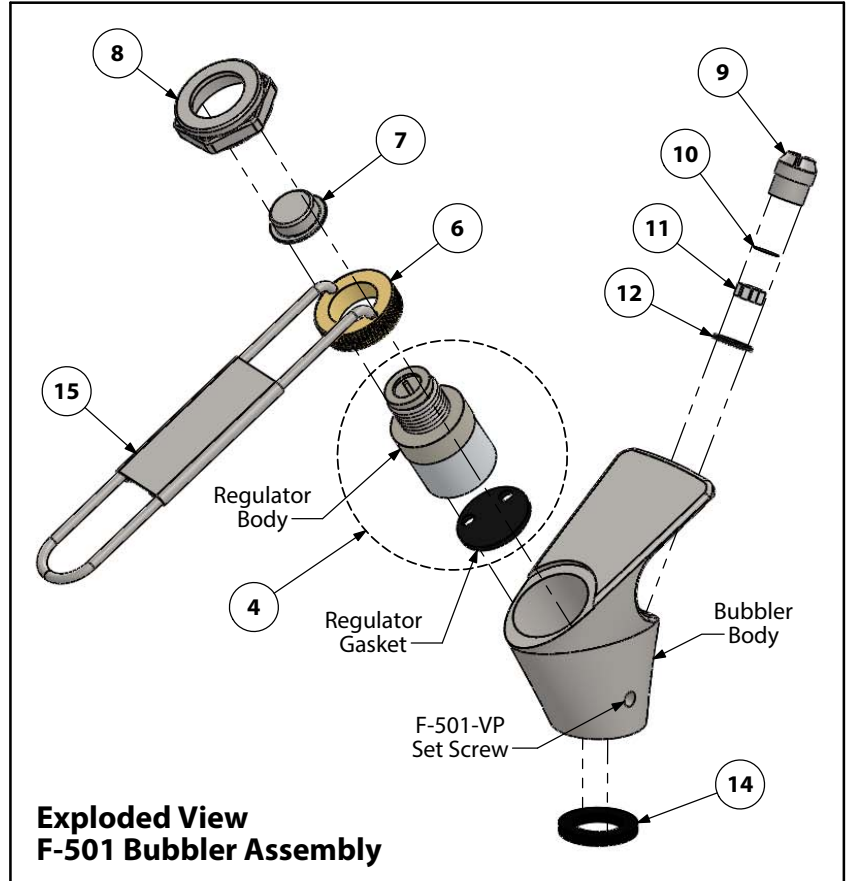
1. Ensure regulator cartridge is cleaned and assembled properly. See Water Regulator Assembly for instructions on assembling.
2. Remove hexagon cover, push button and retaining ring.
3. Insert regulator cartridge into body as shown and tighten with spanner wrench or needle nose pliers. **Do not over tighten, 3.5 lb/ft torque max!**
4. Replace hexagon cover, push button and retaining ring in opposite order.

Bronze F-501 Push Button Order Part Nos.

		MIRRORED	STATUARY	SATIN	OIL RUBBED
F-501 ASSEMBLY	STD	45.0320	45.0420	45.0521	45.0620
	VP	45.0323	45.0423	45.0523	45.0623
BUTTON (7)		45.0338	45.0438	45.0538	45.0638
HEXAGON COVER (8)		45.0331	45.0431	45.0531	45.0631
SPOUT (9)		45.0330	45.0430	45.0530	45.0630

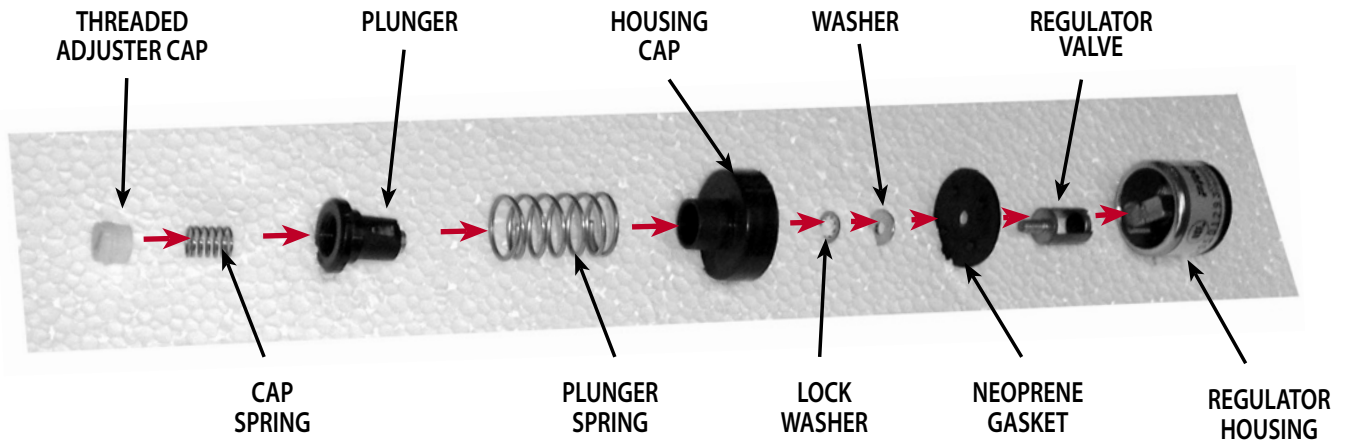
NOTE

Model F-501 bubbler is "LEAD-FREE" per Manufacturers NSF Listing to ANSI/NSF Standard 61.



DRAWING PART NO.	DESCRIPTION	ORDER PART NO.
ASSEMBLY	F-501 S/S PUSH BUTTON ASSEMBLY	45.0001
	F-501 S/S VANDAL PROOF ASSEMBLY	45.0023
4	REGULATOR CARTRIDGE ASSEMBLY	45.0006
6	RETAINING RING - BRASS	45.0008
7	BUTTON - CHROME	45.0009
8	HEXAGON COVER - CHROME	45.0010
9	SPOUT - CHROME	SOLD AS UNIT 45.0011
10	SCREEN - STAINLESS STEEL	
11	STREAM STRAIGHTENER - BRASS	
12	O-RING - RUBBER	
14	MOUNTING WASHER - RUBBER	45.0016
15	SPANNER WRENCH	45.0017

WATER REGULATOR ASSEMBLY



TO ASSEMBLE WATER REGULATOR AFTER CLEANING

- 1 Align regulator valve inside regulator housing
- 2 Place gasket over regulator valve and housing
- 3 Place washer and lockwasher over stem of regulator valve
- 4 Place housing, plunger spring and plunger over regulator housing
- 5 Insert cap spring and screw threaded adjuster cap in place