



BUILT TO MIL-C-24166[C] SPECS

## OPTIONS

- ☐ **HIGH AMBIENT CONDENSER**  
Oversized condenser supplies full capacity in ambient temperatures up to 120°F [49°].
- ☐ **CUPRO-NICKEL WATER COOLED CONDENSER**  
For efficient cooling using sea water.
- ☐ **DUST STOP FILTER**  
Prevents clogging of air-cooled condenser, reduces maintenance.
- ☐ **STAND-BY COOLING PACKAGE**  
Can be purchased with all models for instant replacement of slide-in cooling mechanism when operating unit is removed for maintenance or any other purpose.
- ☐ **CORROSION PROTECTION**  
Special protective coating applied to compressor, copper condenser and the refrigerant line.
- ☐ **GOOSENECK BOTTLE FILLER**  
For convenient bottle or carafe filling.
- ☐ **TASTE MASTER® TMS1-0.5 WATER PURIFIER**  
**Housing:** Heavy duty stainless steel  
**Element:** 0.5 micron, biodegradable carbon block removes lead, particulates, cysts, chlorine, organic odors and tastes. Exclusive seal design negates bypassing and leaks.

Filtrine's INDESTRUCT Model M-10-N marine electric water cooler meets military specifications **MIL-C-24166[C]** and will withstand shock test DWTNSR & DC and vibration test AERONAV.

## FEATURES

- Stainless steel top with a deep basin design to prevent spilling when cooler is inclined to 15° in any direction.
- Available with air cooled, water cooled, or with optional Cupro-Nickel condenser.
- No pre-cooler to clog or collect bacteria. Full rated capacity is based on cooling efficiency without questionable credit to pre-cooler.
- Large, chilled water storage assures plenty of cool water at all times, even during peak demand periods.
- Unique slide-in cooling package simplifies servicing and eliminates down time.

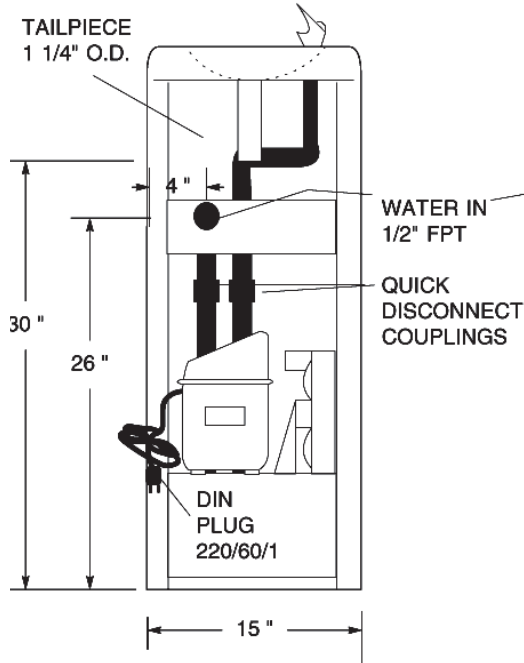
## SPECIFICATIONS

- **COOLING PACKAGE**  
Cooling tank in insulated housing; machine and all controls are factory built as a self-contained cooling mechanism. Quick disconnect couplings permit replacement in minutes without refrigeration or electrical skills. Also allows for bypassing refrigeration system during cold weather months.
- **CONDENSING UNIT** ..... 1/5 HP  
High efficiency, 115V AC, hermetically-sealed compressor with a high capacity, aluminum-finned, copper condenser.
- **RATED CAPACITY** ..... 7-1/2 GPH
- **WATER OUTLET TEMP** ..... 50°F [10°C]
- **CONTROLS**  
Equipped with adjustable thermostat and fully charged with HFO R513A "Ozone Safe - Low GWP" refrigerant.
- **TANK AND EVAPORATOR**  
**CAPACITY** ..... 1 Gal [3.8 L]  
Tank is all stainless steel with immersion coil evaporator, tested for 125 psi working pressure. Large storage to meet peak demand and ensures long cycle and long life machine operation. Tank housed in a rust-proofed, vapor-proof aluminum container, insulated with closed cell thermoelastomer.
- **CABINET**  
18 gauge stainless steel construction with satin finish top and anti-splash ridge, deep basin design and plugged connection for glass filler. Includes stainless steel mounting brackets for bolting cooler to deck when using standard 12-1/4" hole spacing.
- **BUBBLER**  
Stainless steel, chrome plated, self-closing design and built in automatic stream regulator to assure constant 20-125 psi stream.

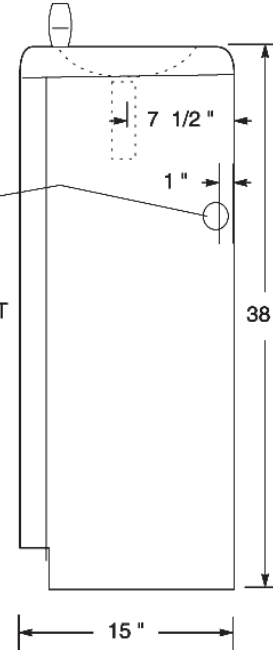
**Note:** Filtrine offers marine electric water coolers in a variety of capacities, options and persons served, see the Filtrine *INDESTRUCT Marine Electric Water Coolers Specifications Sheet* for more details.

### MODEL M-10-N

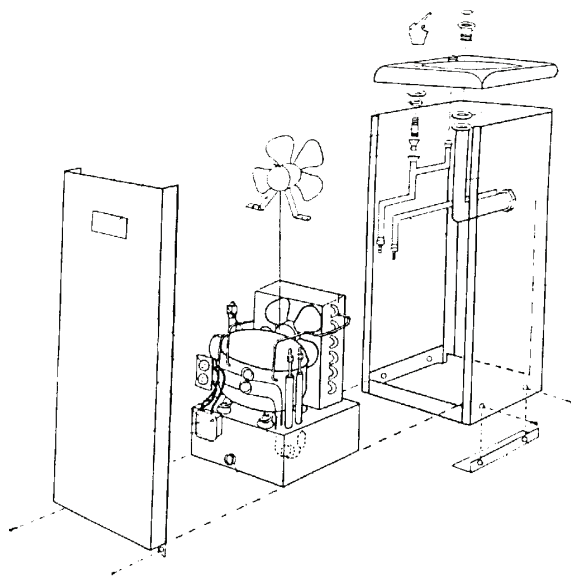
#### REAR VIEW



#### SIDE VIEW



#### EXPLODED VIEW



#### STAINLESS STEEL MOUNTING PLATES

