



Fountain bowl and cover plate shown in standard stainless steel satin finish with "Soft Touch" button valves* bubblers* in mirror finish.



*Hands Free" option available

PRODUCT COMPLIANCE*

ADA Compliance
Buy America Act
CA Proposition 65
Components: CA NSF/ANSI 372-2011 (Lead Free)

*More available on request

Options and finishes may differ from image shown.

Dimensions in drawing subject to options selected.

Features

- [2] 16" diameter, 16 ga. fountain bowls
- No plastic parts
- 100% made in the USA
- Manufactured with lead-free materials
- Integral drain in bowl for ease of cleaning
- 1/4" steel support arm and wall bracket capable of supporting 500 lbs.
- Cover plate and access panel to match bowl finish or choose from unlimited powder coat colors
- 16 ga. plate secured with tamper-resistant screws for added security
- Standard 6" access panel
- Options include sensor activation, bottle fillers, bottle counters, finishes, bubbler valves, and more...

Recommended Add-ons

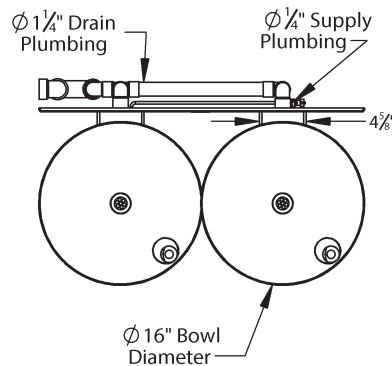
Chiller

Equip your fountain with a Filtrine point-of-use or remote chiller to cool your drinking water. We can help you select the most economic chiller model to fit your demand.

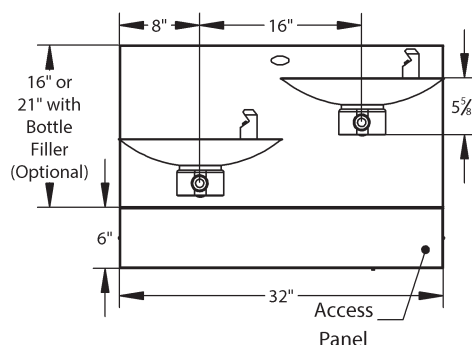
Purifier

Ensure that your drinking water is of the highest quality by adding a Filtrine Taste Master® purifier cabinet underneath the fountain or a remote purification system serving all fountains in the building.

Top View



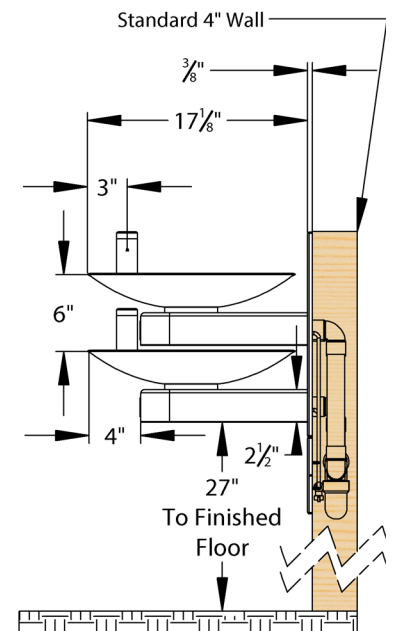
Front View



Select Low Fountain Location

☐ Left (S) ☐ Right

Side View



For options, finishes and more see page 2

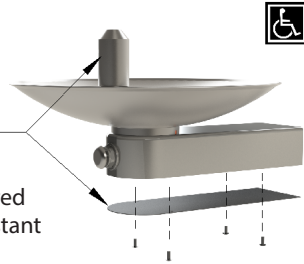


Filtrine Drinking Water Non-Recessed Fountain Options

[S] - Standard
 - ADA compliant

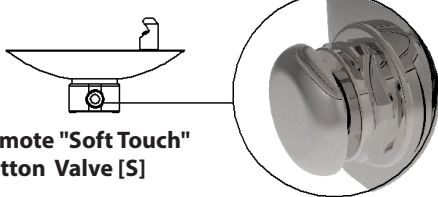
Standard Security Panel and Vandal Proof Bubbler

"Soft Touch"
 Button and
 Projector Bubbler
 with Recessed Set
 Screws



16 GA. Plate Secured
 with Tamper-Resistant
 Screws for Added
 Security

Standard Bubbler Controls



Remote "Soft Touch" Button Valve [S]

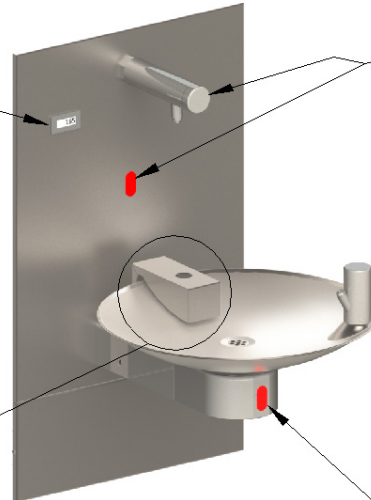
Tamper-Resistant Screws in Bubbler and "Soft
 Touch" Button (if applicable)

"Hands Free" Options

- ☐ **Bottle Counter***
- Digital display of approximate number of bottles saved though filler usage
 - *Only available with sensor activation*



- ☐ **Bottle Rest****
- Located above fountain for reduced splash and one handed operation
 - ***Included with sensor activation*



☐ "Hands Free" Sensor Activated F-520 Bottle Filler

- (Choose only one optional filler)
- 4x- AA lithium batteries (included)
 - Runs approximately 400,000 cycles
 - Features automatic shutoff (30 sec)
 - Helps prevent vandalism and water waste.

*120/60/1 voltage

☐ "Hands Free" Sensor Activated Bubbler

☐ Optional Cane Apron on High Fountain Arm

ADA compliant cane
 apron provides the
 27" floor to underside
 requirement that certain
 states have

8 1/2" High Cane Apron



☐ Optional Soft Touch Button F-520 Bottle Filler (Choose only one optional filler)

- Mounted 10" above fountain bowl.
- Requires large cover plate.
- Comes standard with tamper proof screws.
- Supply plumbing and mounting tongue for filler provided by Filtrine.



Other options are available, please contact the factory for more choices.

Custom Specification:

Fountain Finish (Check one)

☐ Satin Stainless [S] ☐ Mirrored Stainless ☐ Powder Coat _____ ☐ Satin Bronze ☐ Mirrored Bronze ☐ Statuary Bronze ☐ Oil-Rubbed Bronze

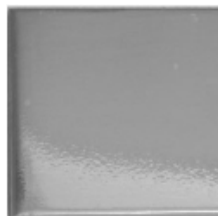
Optional Cover Plate Finish (Check one)

☐ Satin Stainless [S] ☐ Mirrored Stainless ☐ Powder Coat _____ ☐ Satin Bronze ☐ Mirrored Bronze ☐ Statuary Bronze ☐ Oil-Rubbed Bronze

Stainless



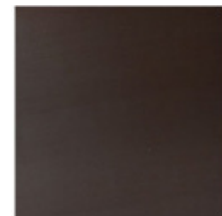
Satin Stainless Steel [S]



Mirrored Stainless Steel

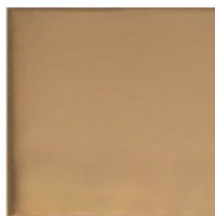


Powder Coat

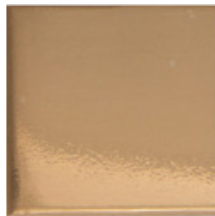


Oil Rubbed Bronze Powder Coat

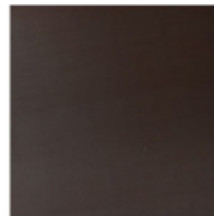
Bronze



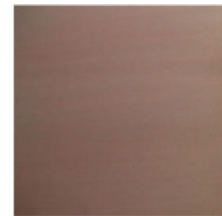
Satin Bronze



Mirrored Bronze



Oil Rubbed Bronze



Statuary Bronze

Filtrine Mfg. Co. • 15 Kit St. Keene, NH 03431 USA
 800-930-3367 • 603-352-5500 • FAX 603-352-0330
www.filtrine.com • drinking_water@filtrine.com



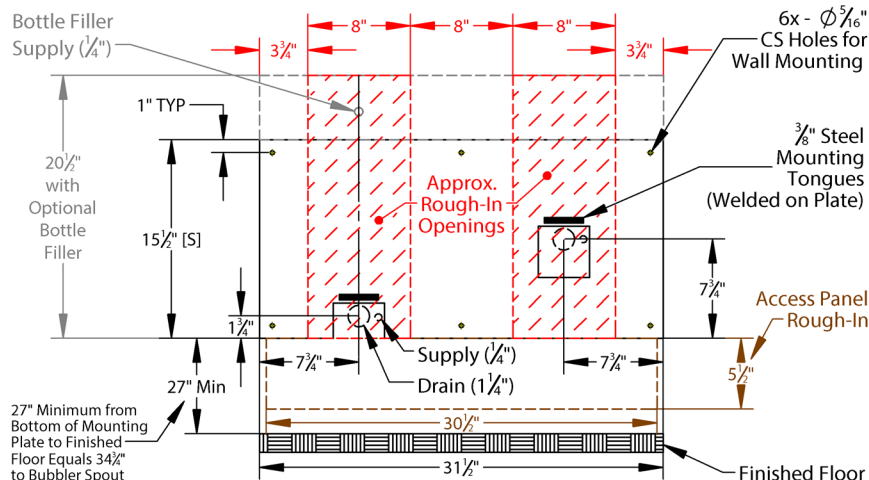
FILTRINE IS ISO 9001:2015 CERTIFIED BY NSAI
 PRODUCT LINE APPROVED MARK AVAILABLE



107-16-HL [EB]
 REVISED
 7/28/2023

Model 107-16-HL Drinking Water Installation Drawing

Mounting Plate Details (Front)



Mounting Plate Rough-In Dimensions (hatched, left)

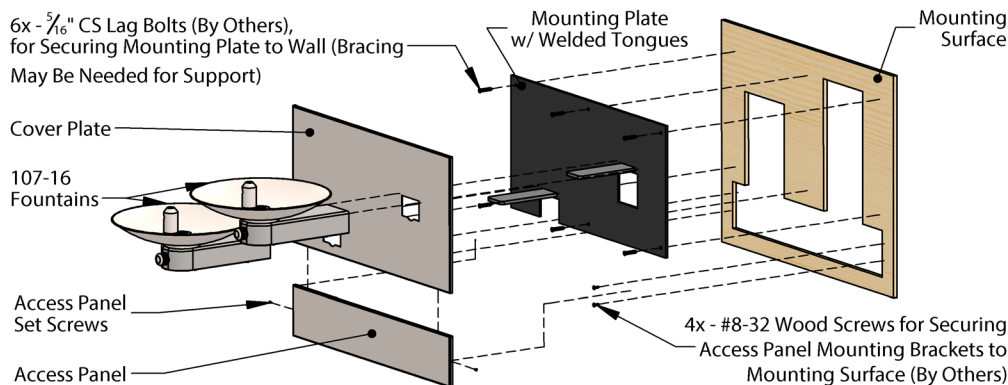
MODEL	HEIGHT	WIDTH
Standard Plate	15 $\frac{1}{2}$ "	8"
Bottle Filler Station	20 $\frac{1}{2}$ "	8"

Access Panel Rough-In Dimensions (outlined, left)

Model	Height	Width
Standard Plate	5 $\frac{1}{2}$ "	30 $\frac{1}{2}$ "

Note: All views shown are for typical installation of 107-16-HL. Views, dimensions, and diagrams may change for specific installation requirements.

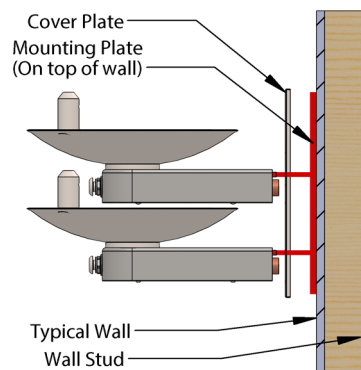
Exploded On-Wall Installation View 107-16-HL with Access Panel



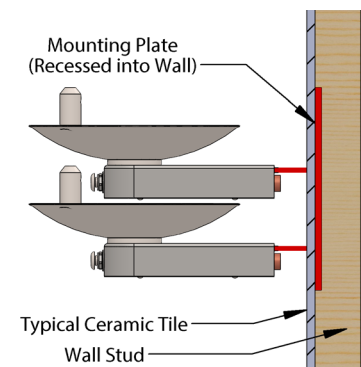
Typical Assembly Instructions (Always Install Per Local Code)

- Cut rough opening as shown above and install blocking or fixture carrier as required to support the assembly.
- If optional access panel was ordered cut a separate rough opening (table, top right) extending below the fountain mounting plate.
- Run drain pipe to center of openings on mounting plate and install drain trap in wall per local code.
- Run supply water with service valve, if necessary.
- If optional bottle filler is included with order, attach piping assembly provided by Filtrine to the back side of the mounting plate with two screws and rubber gasket for standard bottle filler and flare connection for vandal proof bottle filler.
- Fasten mounting plate over rough opening with $\frac{5}{16}$ " countersunk lag bolts with bottom of plate 27" above the floor to meet ADA fountain height requirement of 34 $\frac{3}{4}$ " to the bubbler spout.
- Install cover plate over the mounting plate for on-wall installations.
- Slide each fountain and vandal proof bottle filler arm (if ordered over the horizontal tongues protruding from the mounting plate and fasten arms with set screws pushing slightly against the cover plate or finished wall.
- Connect drain line to slip coupling and connect water connection.
- If your model includes the access panel, measure, mark and install the included "L" brackets with #8-32 screws and align panel to cover plate with alignment pins.

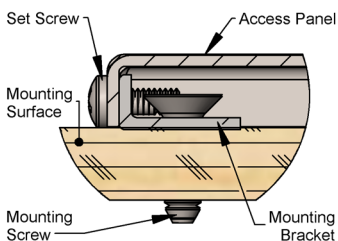
On-wall Mounting Detail With Cover Plate



In-wall Mounting Detail Without Cover Plate



Access Panel Mounting Brackets Installation Details



Typical Drain Plumbing Detail

(In-Wall Plumbing Provided By Others, Install Per Local Code)

