

103-ALC-HL

Recessed, High/Low Drinking Fountain



103-ALC-HL
Shown with optional bottle filler.
Illustration only.

FOUNTAIN SPECIFICATIONS

FOUNTAIN MATERIAL – 16 gauge

- | | |
|--|--|
| <input type="checkbox"/> Stainless Steel | <input type="checkbox"/> Bronze |
| FINISH | FINISH |
| <input type="checkbox"/> Satin [S] | <input type="checkbox"/> Satin [S] |
| <input type="checkbox"/> Mirror | <input type="checkbox"/> Mirror |
| | <input type="checkbox"/> Statuary Bronze |
| | <input type="checkbox"/> Oil Rubbed Bronze |

FOUNTAIN CONTROL OPTIONS

- ☐ Separate "SOFT TOUCH" button valve [S]*
- ☐ Integral "PUSH BUTTON" valve
- ☐ Integral "EASY TOUCH" lever valve

NOTE: Finish to match bowl except stainless steel
"Soft Touch" valve is only available in mirror.

LOW FOUNTAIN LOCATION

- ☐ Left [S] ☐ Right

VANDAL-PROOF FOUNTAIN OPTIONS

- ☐ BUBBLER secured with tamper-resistant set screws
- ☐ BUBBLER operated by "HANDS-FREE" photocell activation

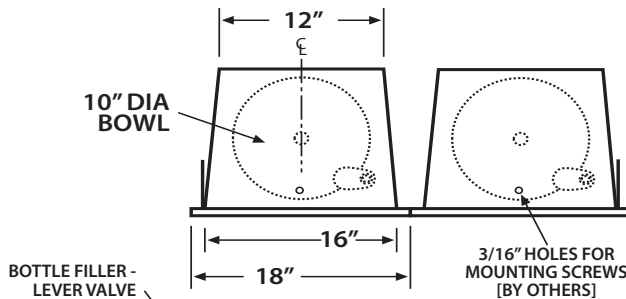
BOTTLE FILLER OPTION

- ☐ BOTTLE FILLER mounted over low fountain with push back lever

[S] = STANDARD

103-ALC-HL Installation Instructions

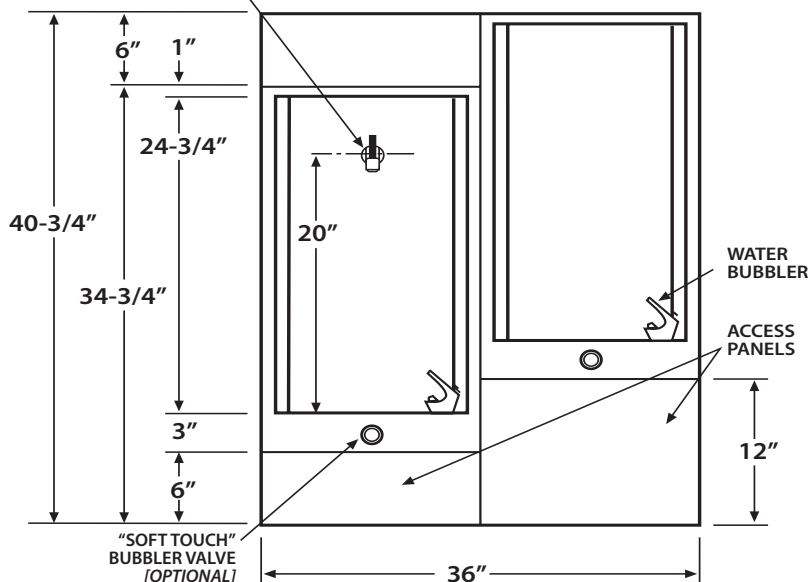
TOP VIEW



WALL OPENING-NO BOTTLE FILLER
35"W x 12-1/2"D x 39-3/4"H

WALL OPENING-WITH BOTTLE FILLER
35"W x 14"D x 39-3/4"H

FRONT VIEW



RIGHT END

