

# 102-TM

## Semi-Recessed Drinking Fountain with Purifier



Fountain shown in satin stainless steel finish.

### FOUNTAIN SPECIFICATIONS


#### FOUNTAIN MATERIAL – 16 gauge

- Stainless Steel       Bronze

#### FINISH

- Satin [S]                       Satin [S]  
 Mirror\*\*                       Mirror\*\*  
 Powder Coat                 Statuary Bronze  
 Color \_\_\_\_\_             Oil Rubbed Bronze

#### FOUNTAIN CONTROL OPTIONS

- Separate "SOFT TOUCH" button valve [S]\*   
 Integral "PUSH BUTTON" valve  
 Integral "EASY TOUCH" lever valve

*NOTE: Finish to match bowl except stainless steel  
 "Soft Touch" valve is only available in mirror.*

#### VANDAL-PROOF FOUNTAIN OPTIONS

- BUBBLER secured with tamper-resistant set screws  
 BUBBLER operated by "HANDS-FREE" sensor  
 SECURITY PANEL for under fountain bowls  
*Finish matches fountain.*

### BOTTLE FILLER OPTIONS

- BOTTLE FILLER mounted on back over fountain with push back lever

### PURIFIER SPECIFICATIONS

MODEL - Taste Master® TMS1-0.5

HOUSING - 16 ga. durable, long-lasting stainless steel

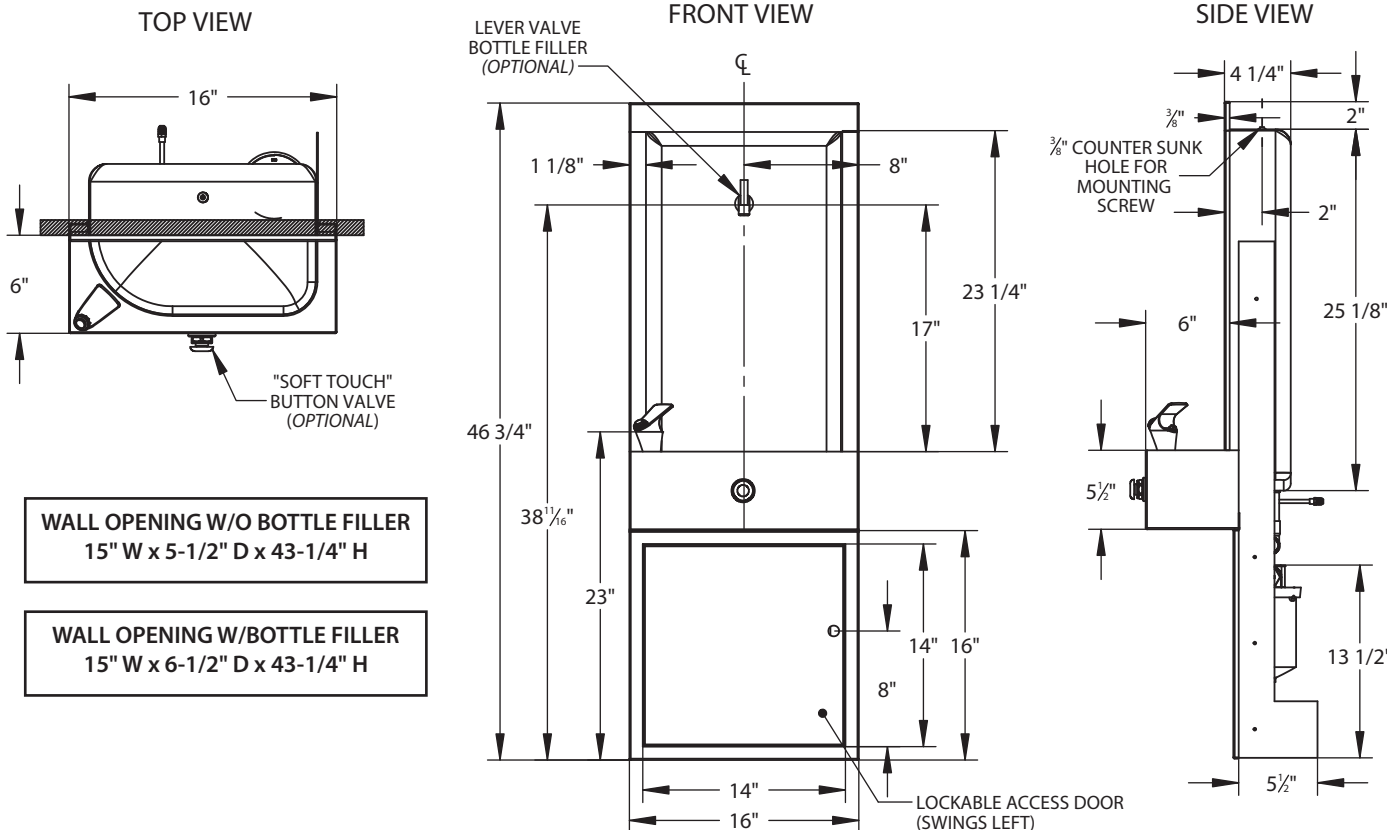
ELEMENT - Carbon block removes lead, particulates, cysts, chlorine, organic odors and tastes. Exclusive "Dual Seal" design negates bypassing and leaking.

\*ADA compliant, less than [5] lbs force to activate.

\*\*Check on availability with factory.

[S] = STANDARD

### 102-TM Drawing



WALL OPENING W/O BOTTLE FILLER  
 15" W x 5-1/2" D x 43-1/4" H

WALL OPENING W/BOTTLE FILLER  
 15" W x 6-1/2" D x 43-1/4" H