

*Floor model illustration only.*



This fixture is approved by  
**Federal Bureau of Prisons**

Filtrine's INDESTRUCT Model WCS-20-HL-HC prison electric water cooler is a heavy duty stainless steel vandal-resistant wall-snug high/low drinking fountain that includes a water chiller and hot water heater with cold and hot water dispensers.

### SECURITY FEATURES

- Tamper-resistant hot water gooseneck glass filler welded to deck, remote "Soft Touch" valve installed in front panel
- Tamper-resistant cold water bubbler with remote "Soft Touch" valve secured to deck with tamperproof screw
- Tamper-resistant access panels on cabinet and wheelchair extension secured with tamper-proof screws
- Heavy-duty 16 or 14 ga stainless steel cabinet with #4 satin finish
- Heavy-duty 16 or 14 ga stainless steel bowl and drain (integral with bowl with #4 satin finish)
- 1/4" steel mounting plate bolted through wall with 3/8" steel support arms
- High/low bowls for ADA compliance

### SPECIFICATIONS

**PERSONS SERVED:** 96 per one hour peak

#### CHILLED WATER

**Storage Tank:** 2 gal [7.6 ltr]

Stainless steel with immersion coil evaporator

**Chilled Water Capacity:** 12 gal [45.6 ltr]

Per one hr @ 50°F [10°C]

#### HOT WATER

**Storage Tank:** 72 oz

Insulated stainless steel

**Hot Water Capacity:** 1.5 gal [5.7 ltr]

Per one hr @ 190°F [69°C]

**COMPRESSOR HP:** 1/5

**SUPPLY POWER:** 115/60/1, consult the factory for other voltages

#### PLUMBING CONNECTIONS

**Supply:** 1/4" FPT

**Drain:** 1-1/4" FPT

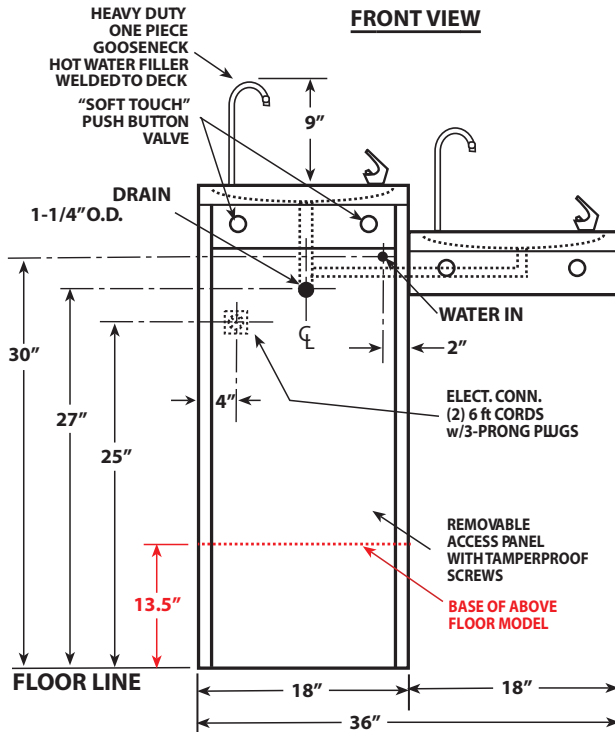
**WEIGHT:** 300 lbs

### MODEL TYPE

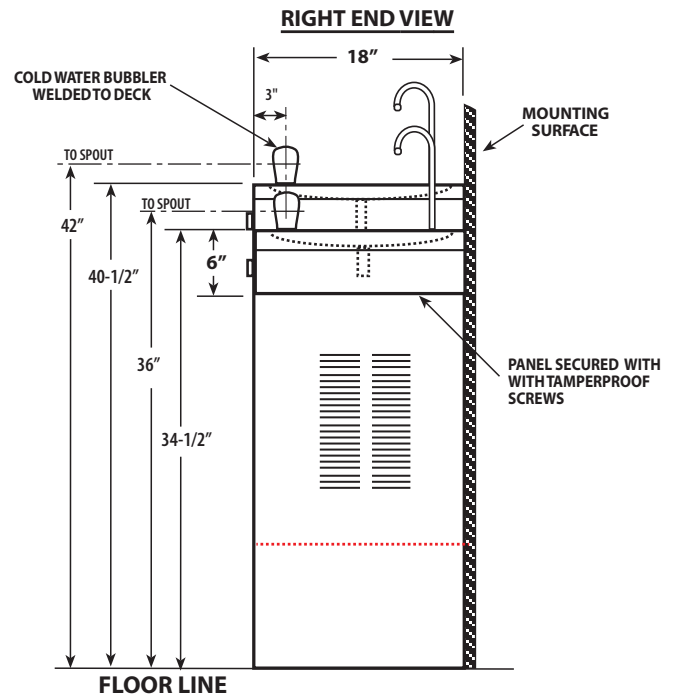
- ☐ FLOOR MODEL  
☐ ABOVE FLOOR MODEL

### MODEL WCS-20-HL-HC

**FRONT VIEW**

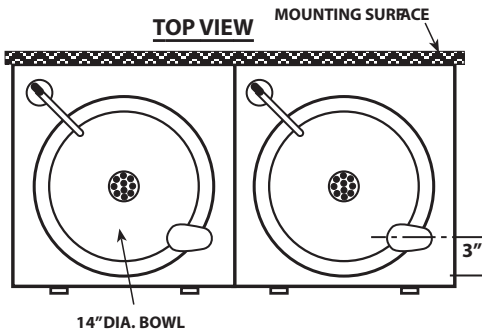


**RIGHT END VIEW**

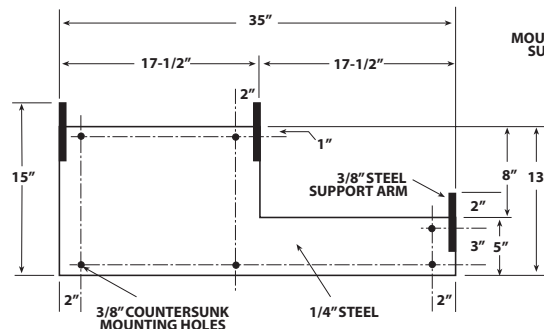


**MOUNTING PLATE DETAIL**

**TOP VIEW**



**FRONT VIEW**



**LEFT ENDVIEW**

