



FILTRINE FOUNTAIN COLLECTION

Model ALC-C and ALC-X
Alcove Fountains




Shown in 16 gauge satin stainless steel
finish with a matching 107-14 fountain
and a mirror finish stainless steel bubbler.

FILTRINE FOUNTAIN COLLECTION Model ALC-C and ALC-X Alcove Fountains

FOUNTAIN SPECIFICATIONS

- ☐ 107-14 ☐ 107-16 ☐ Single ☐ High/Low
 LOW FOUNTAIN LOCATION ☐ Left [S] ☐ Right
 MATERIAL - 16 ga
☐ Stainless Steel [S] ☐ Bronze
 FINISH FINISH
☐ #4 Satin [S] ☐ #4 Satin [S]
☐ #8 Mirror ☐ #8 Mirror
☐ Powder Coat ☐ Statuary Bronze
 ☐ Oil-rubbed Bronze

FOUNTAIN CONTROL OPTIONS: (finish to match)

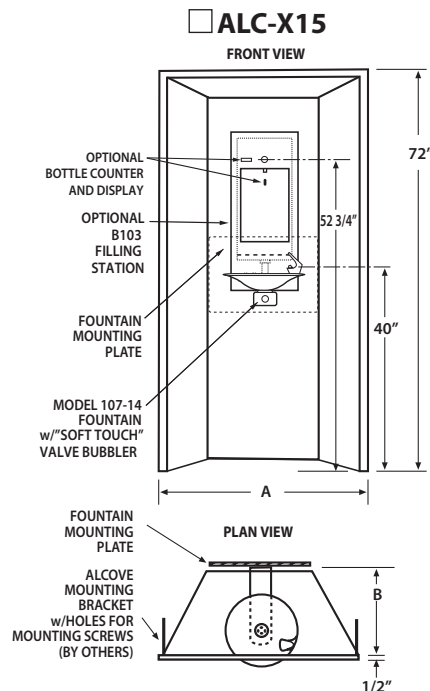
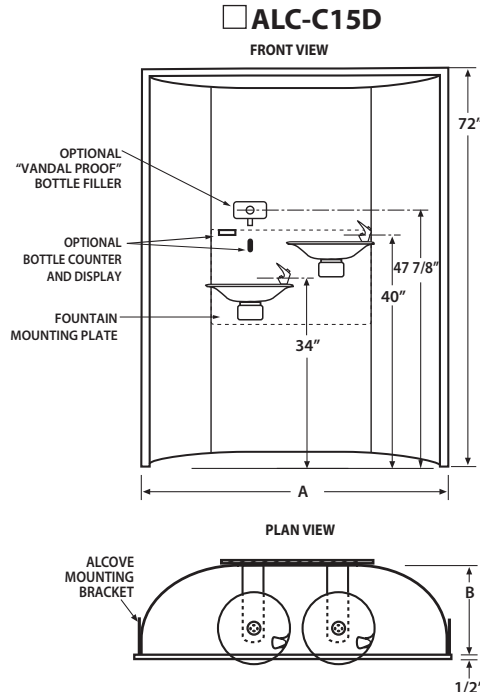
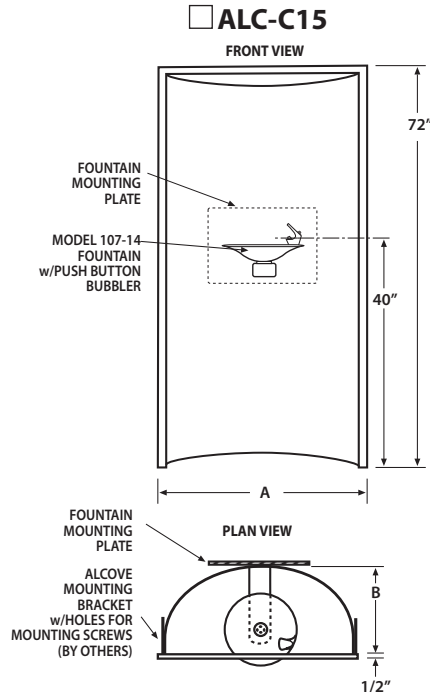
- ☐ Separate "SOFT TOUCH" valve [S]* 
☐ Integral "PUSH BUTTON" valve
☐ "HANDS-FREE" sensor activation

OTHER OPTIONS

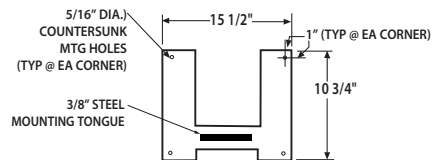
- ☐ "VANDAL PROOF" Bottle Filler
☐ B-103 Filling Station
☐ "HANDS-FREE" sensor activation
☐ Bottle counter display

[S] = STANDARD

ALCOVE DRAWINGS (Shown With 107-14 Fountains & Bottle Filler Options)



MOUNTING BRACKET FOR B103 FILLING STATION



ALCOVE DIMENSIONS					
MODEL	DIMENSION - INCHES		WALL OPENING - INCHES		
	A	B	W	D	H
ALC-C15	32	15	31	16	72
ALC-C18	38	18	37	19	72
ALC-C15D	62	15	61	16	72
ALC-C18D	65	18	64	19	72
ALC-X15	46	15	45	16	72
ALC-X18	49	18	48	19	72
ALC-X15D*	52	15	51	16	72
ALC-X18D*	55	18	54	19	72

* DUAL FOUNTAIN MODEL - NOT SHOWN - DRAWINGS AVAILABLE