

Model FC-103 RECESSED DRINKING FOUNTAIN with NO FAN Chiller/Purifier



FC-103
Illustration

FOUNTAIN SPECIFICATIONS

FOUNTAIN MATERIAL - 16 gauge

☐ Stainless Steel ☐ Bronze

Finish

☐ #4 Satin ☐ #8 Mirror ☐ Statuary Bronze

COVER PLATE MATERIAL - 16 gauge

☐ Stainless Steel ☐ Bronze

Finish

☐ #4 Satin ☐ #8 Mirror ☐ Statuary Bronze

Optional Cover Plate Finish

☐ Gloss enamel - contact factory

BUBBLER TYPE

☐ Integral PUSH BUTTON valve

☐ Separate SOFT TOUCH valve

☐ Integral EASY TOUCH valve

☐ Separate SIDE MOUNT valve

BUBBLER FINISH

STAINLESS STEEL - Default

☐ #8 Mirror Finish

BRONZE

☐ #8 Mirror Finish - Default

☐ #4 Satin Finish

☐ Statuary Finish

BUBBLER - OPTION

☐ Recessed, tamper-resistant set screw
secures bubbler to fountain

BOTTLE FILLER - OPTION

☐ With integral push back lever valve
on cover plate, over bowl

CHILLER SPECIFICATIONS

MODEL: 66NF - NO FAN

COOLING CAPACITY: 5 gph at 50°F

STORAGE: 2 gal, insulated, stainless steel tank

REFRIGERANT: HFC R134a "Ozone Safe"

ELECTRICAL: ☐ 115/60/1 ☐ 240/60/1

PURIFIER SPECIFICATIONS

MODEL - TasteMaster TM1-0.5

CONSTRUCTION - FDA food grade poly liner
with stainless steel outer housing

ELEMENT - Carbon block removes particulates,
cysts, chlorine, organic odors and tastes. Exclusive
"Dual Seal" design negates bypassing and leaking

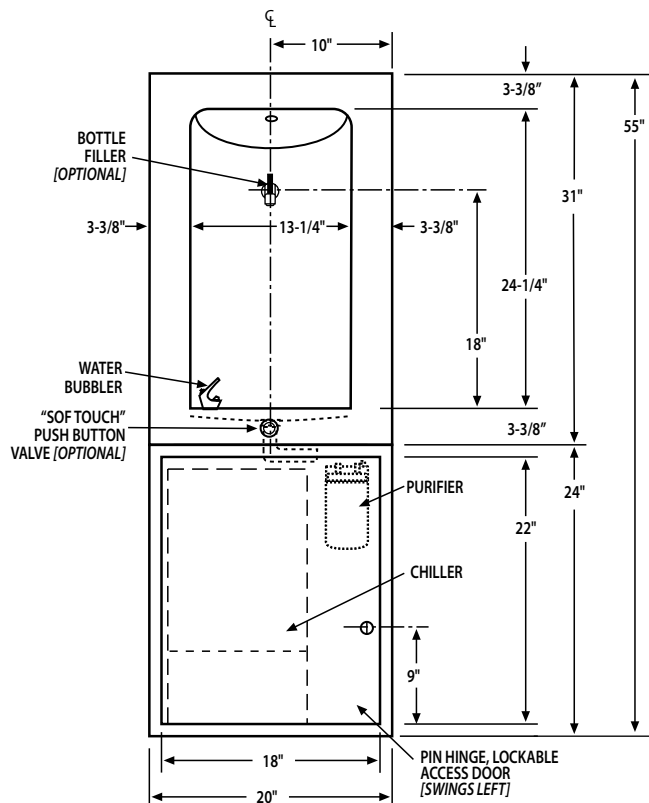


FILTRINE IS ISO 9001-2008 REGISTERED
PRODUCT LINE APPROVED CE MARK AVAILABLE

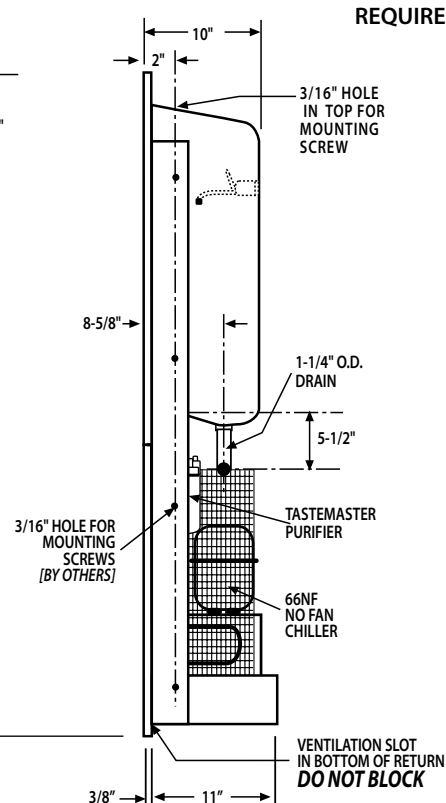
Model FC-103 Recessed Drinking Fountain with Chiller/Purifier REFERENCE DATA - Contact Filtrine for quote or submittal

WALL OPENING
19"W x 11-1/2"D x 53"H

FRONT VIEW



SIDE VIEW



NOTE
MINIMUM OF 4" x 8"
OPENING TO PLENUM
REQUIRED FOR EXHAUST