

QCP 1.5-ASX Quick Connect Panel – Indoor Installation Only

Includes Heat Exchanger for Backup Cooling Using Plant Chilled or City Water



TYPICAL QCP-ASX

WORKS WITH MEDICAL EQUIPMENT SUCH AS MRIs, CTs, AND LINEAR ACCELERATORS COOLED BY FILTRINE CHILLERS

STANDARD HOOKUP CONNECTIONS PLUS

- Heat Exchanger
- In-Line Filter
- Pressure Gauges
- Temperature Gauges
- Flow Meter

WARRANTY

All parts are covered FOB jobsite for 12 months from the start date or 15 months date of shipment or whichever comes first.

Designed to be used with a Filtrine medical chiller, this compact panel has a built-in heat exchanger which allows switching automatically to a back up source of cooling (either city water or plant chilled water) if a fault condition should occur. Note that the back up cooling will not be available if the water from the chiller stops circulating. For fail-safe protection, specify a back up pump with emergency power in event of a power failure. It also prevents loss of the primary cooling medium (glycol, distilled water, etc) during the switchover.

The panel provides diagnostic information on the Filtrine chiller at a glance and includes a built-in filter in the primary cooling loop to protect the medical equipment. For instantaneous availability of autoswitchover to city water or plant chilled water, the panel is installed between the Filtrine chiller and medical equipment.

CABINET: Constructed of enameled aluminum panels, with stainless steel top and sides. Panel is removable without tools for access to valves and filter. Dimensions are 56" [142 cm] W x 18" [46 cm] D x 36" [91 cm] H.

HEAT EXCHANGER: Brazed-plate water-to-water heat exchanger removes up to 240,000 BTU/hr from primary cooling solution at a flow rate of 35 gpm using city water or plant chilled water as the secondary coolant. The maximum temperature of the secondary coolant should be at least 5°F [-15°C] colder than the desired primary coolant temperature.

TEMPERATURE GAUGES: For water entering and leaving equipment are dial-type, in Celsius and Fahrenheit, using a probe for maximum accuracy with no pressure drop.

PRESSURE GAUGES: Dial-type, in psi and bar and generate no pressure drop.

FLOW METER: Analog type with moving indicator in liters and gallons per minute, for minimum pressure drop.

FILTER: 100 micron pleated filter element in heavy duty stainless steel housing with less than 1 psi pressure drop when new. Filter/housing located inside the panel; includes bypass piping to ensure easy filter element change.

CONNECTIONS

CHILLER SIDE..... 1-1/2" [38 mm] FPT* copper pipe

EQUIPMENT SIDE..... 1-1/2" [38 mm] FPT

SERVICE DRAIN..... 1/2" [12.5 mm] FPT

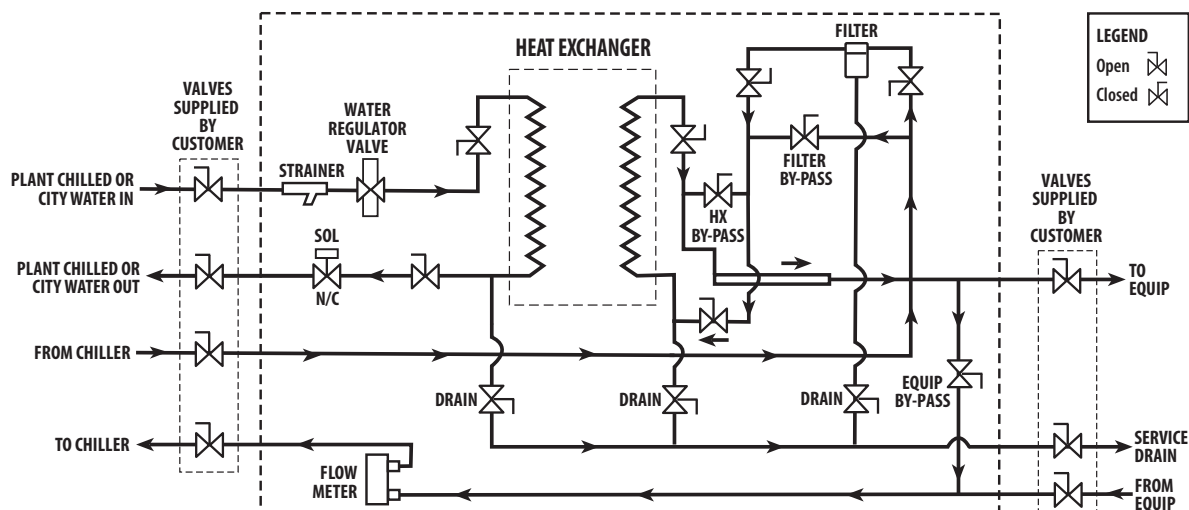
* Other sizes available

VOLTAGE: 115/60/1 supplied from Filtrine chiller

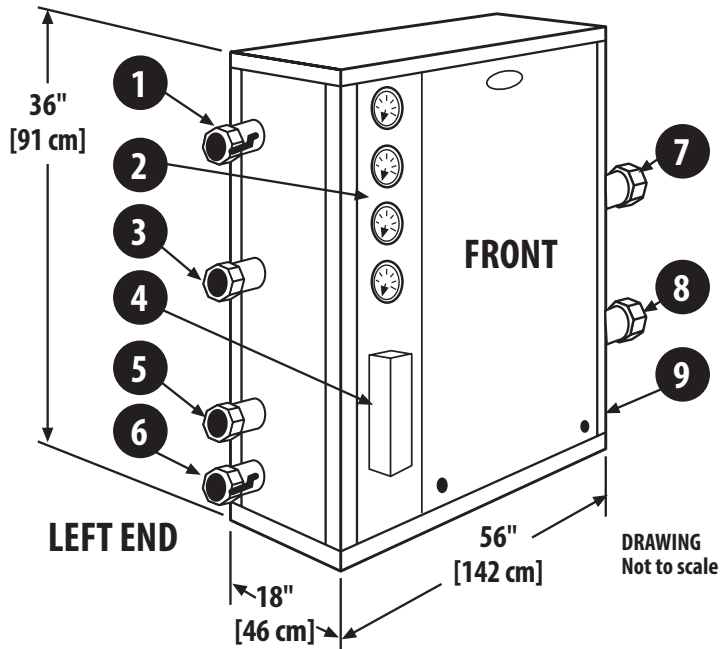
UNIT WEIGHT 450 lbs. [203 Kg]

TYPICAL QCP-ASX SCHEMATIC

QCP-ASX PLUMBING SCHEMATIC



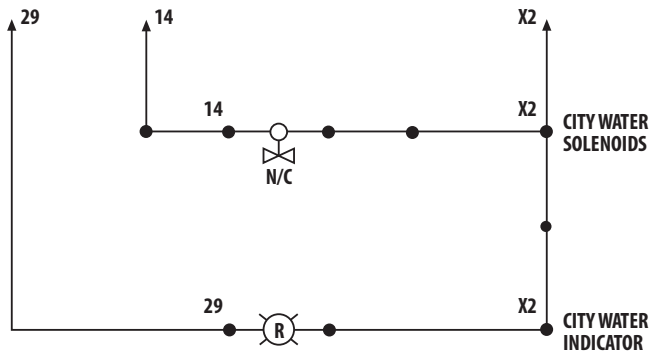
STANDARD MODEL— QCP-ASX



LEGEND

1. Plant Chilled or City Water In
2. Press and Temp Gauges
3. From Chiller 1-1/2" [38 mm] FPT
4. Flow Meter
5. To Chiller 1-1/2" [38 mm] FPT
6. Plant Chilled or City Water Drain 1-1/2" [38 mm] FPT
7. To Equip 1-1/2" [38 mm] FPT
8. From Equip 1-1/2" [38 mm] FPT
9. Service Drain 1/2" [12.5 mm] FPT

INTERCONNECT TERMINALS TO CHILLER



MOUNTING BRACKET

