

FCC-107-14-HL

Non-Recessed, Vandal Proof High/Low Fountain with
In-Wall Chiller and Taste Master® Purifier



Fountain bowl, cover plate and chiller cabinet shown in standard stainless steel satin finish with "Soft Touch" button valves* and bubblers* in mirror finish

**"Hands Free" option available

PRODUCT COMPLIANCE*

ADA Compliance

Buy America Act

CA Proposition 65

Filters: NSF/ANSI Standards 42 and 53 (Lead Free)

Components: CA NSF/ANSI 372-2011 (Lead Free)

UL STD 399

CSA STD C22.2 #120

*More available on request

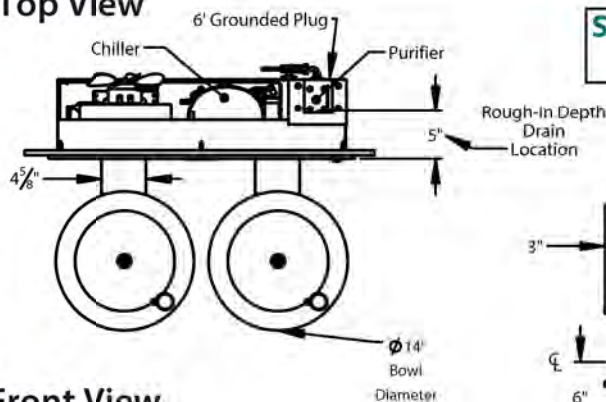
Options and finishes may differ from image shown.

Dimensions in drawing subject to options selected.

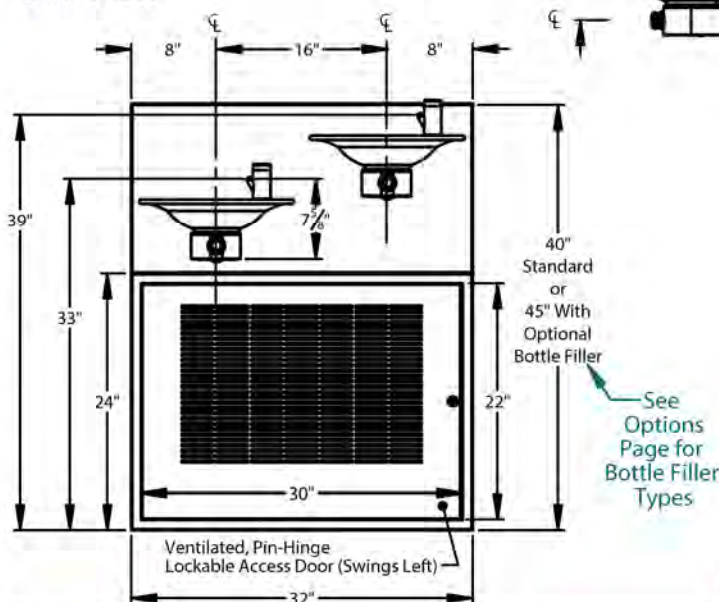
Features

- [2] 14" diameter, 16 ga. fountain bowls
- No plastic parts
- 100% made in the USA
- Manufactured with lead-free materials
- Integral drain in bowl for ease of cleaning
- 1/4" steel support arm and wall bracket capable of supporting 500 lbs.
- Matching cover plate and cabinet finishes including unlimited powder coat colors
- 16 ga. panel secured with tamper-resistant screws.
- Options include sensor activation, bottle fillers, bottle counters, finishes, bubbler valves, and more...

Top View



Front View

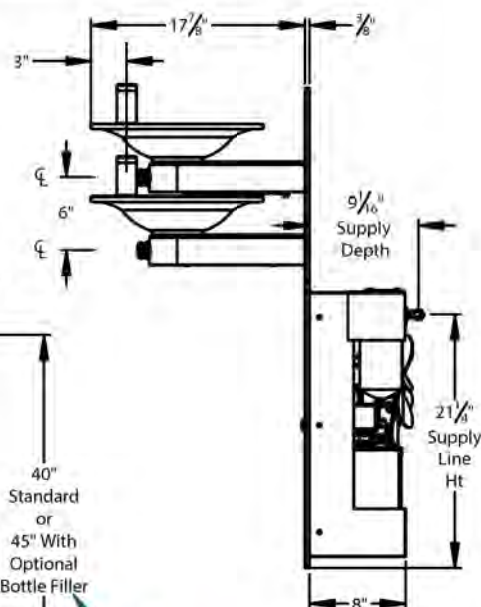


Select Low Fountain Location

☐ Left[S]

☐ Right

Side View



See Options Page for Bottle Filler Types

For options, finishes and more see page 2

FCC-107-14-HL Models Include:

Chiller: Model 56A

• Water in: 1/4" FPT

• Cooling Capacity: 6 GPH @ 50°F [10°C]*

• Storage: 2 gal, insulated stainless steel tank

• Refrigerant: HFO R513A "Ozone Safe - Low GWP"

• Electrical: 115/60/1 or specify _____

*Higher capacity chillers are available consult factory for correct model #s.

Purifier: Taste Master® TMS1-0.5

• Construction: Stainless steel housing

• Element: Carbon block removes lead, particulates, cysts, chlorine, organic odors and tastes. Exclusive seal design negates bypassing and leaking.

Standard Security Panel and Vandal Proof Bubbler [S]

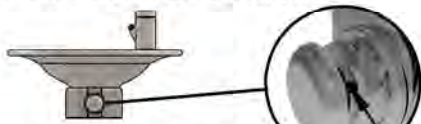


"Soft Touch" Button and Projector Bubbler with Recessed Set Screws

16 ga. Plate Secured with Tamper-Resistant Screws for Added Security



Standard Bubbler Controls



Remote "Soft Touch" Button Valve [S]

Tamper-Resistant Screws in Bubbler and "Soft Touch" Button(if applicable)

"Hands Free" Options

☐ Bottle Counter*

- Digital display of approximate number of bottles saved through filler usage

* Only available with sensor activation

☐ Bottle Rest**

- Located above fountain for reduced splash and one handed operation

**Included with sensor activation

☐ "Hands Free" Sensor Activated F-520 Bottle Filler

(Choose only one optional filler)

- 4x -AA lithium batteries (included)
- Runs approximately 400,000 cycles
- Features automatic shutoff (30 sec)
- Helps prevent vandalism and water waste.

*120/60/1 voltage available

☐ "Hands Free" Sensor Activated Bubbler

☐ Optional Soft Touch Button F-520 Bottle Filler (Choose only one optional filler)

- Mounted 10" above fountain bowl.
- Requires larger cover plate.
- Comes standard with tamper proof screws.
- Supply plumbing for filler provided by Filtrine.



Other options are available, please contact the factory for more choices.

Custom Specifications:

Fountain Finish (Check One)

☐ Satin Stainless [S] ☐ Mirrored Stainless ☐ Powder Coat _____ ☐ Satin Bronze ☐ Mirrored Bronze ☐ Statuary Bronze ☐ Oil-Rubbed Bronze

Optional Cover Plate Finish (Check One)

☐ Satin Stainless [S] ☐ Mirrored Stainless ☐ Powder Coat _____ ☐ Satin Bronze ☐ Mirrored Bronze ☐ Statuary Bronze ☐ Oil-Rubbed Bronze

Stainless



Satin Stainless Steel [S]



Mirrored Stainless Steel



Powder Coat

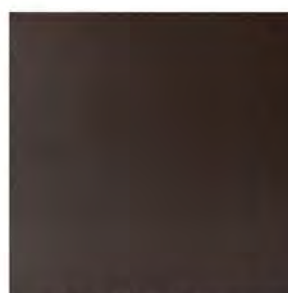
Bronze



Satin Bronze



Mirrored Bronze



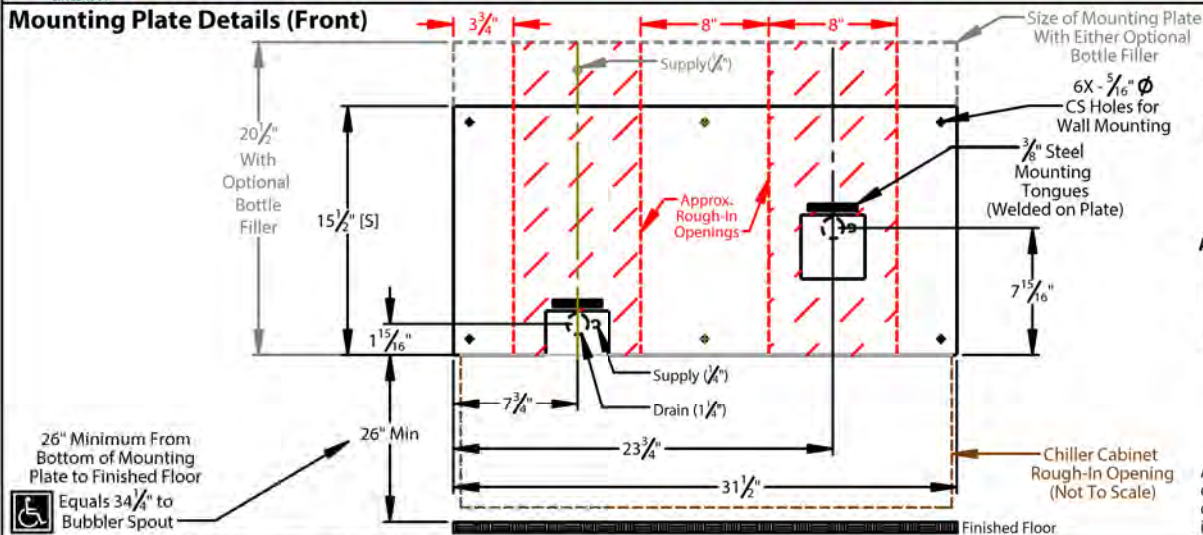
Oil Rubbed Bronze



Statuary Bronze

Model FCC-107-14-HL Drinking Water Installation Drawing

Mounting Plate Details (Front)



Approximate Rough-In Dimensions (hatched, left)

Model	Height	Width
Standard Plate	15 1/2"	8"
Bottle Filler Plate	20 1/2"	8"

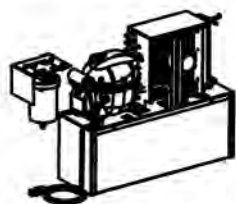
Approximate Chiller Cabinet Rough-In Dimensions (outlined, left)

Model	Height	Width
Standard Cabinet*	23"	31"

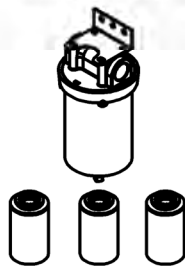
*Wall opening must be 10" deep to allow room for chiller box and purifier

All views shown are for typical installation of FCC-107-14-HL. Views, dimensions and diagram may change for specific installation requirements.

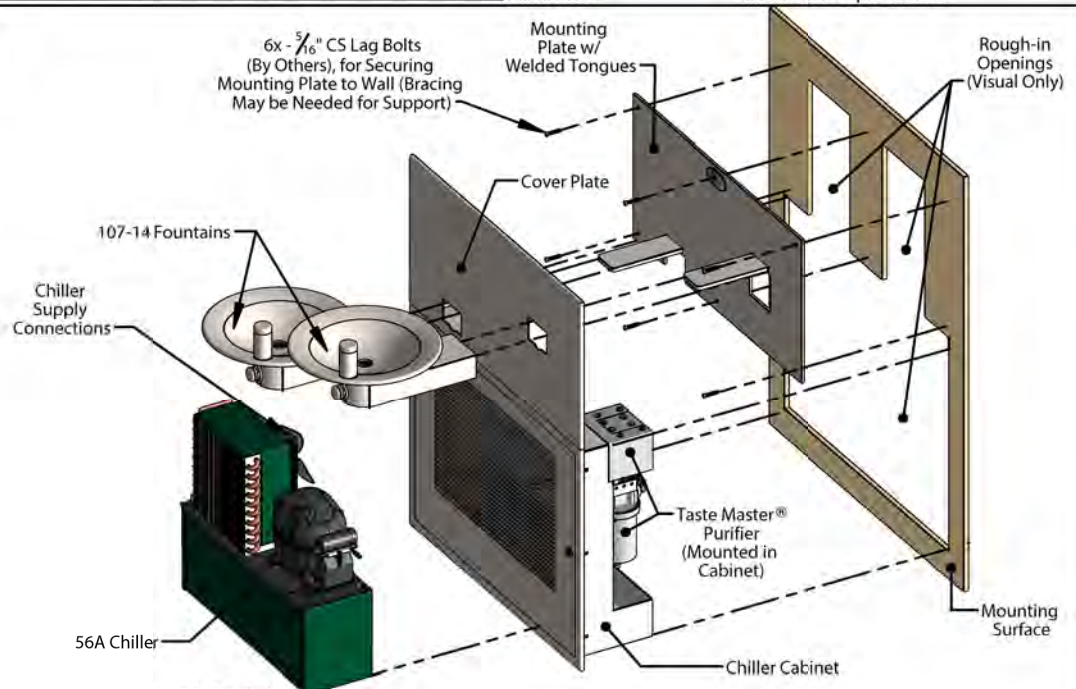
Exploded On-Wall Installation View FCC-107-14-HL with Chiller Cabinet



Model 56A Chiller Included with FCC-107-14-HL



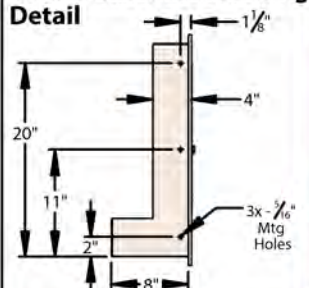
FCC-107-14-HL Includes Taste Master® Purifier with Three Elements (1 Year Supply)



Typical Assembly Instructions (Always Install Per Local Code)

1. Cut fountain rough openings per install requirements (rough opening example shown above) and install blocking or fixture carriers as required to support the drinking fountain mounting plate and chiller cabinet in a minimum 10" deep wall.
2. Cut a separate rough opening extending below the fountain mounting plate, 23" high x 31" wide maximum rough in opening dimensions.
3. Run drain piping to center of openings on mounting plate (dimensioned above), and install drain trap(s) in wall per local code.
4. Run supply water line to mounted Taste Master® filter housing.
5. If optional bottle filler is included with order, attach piping assembly provided by Filtrine to the back side of the mounting plate with two screws and rubber gasket for standard bottle filler and flare connection for vandal proof bottle filler.
6. Fasten mounting plate to mounting surface over rough opening with 3/16" countersunk lag bolts with bottom of plate 26" above the floor to meet ADA fountain height requirement of 34 1/4" to the bubbler spout.
7. Install chiller cabinet in rough opening below the mounting plate using 1/8" holes in the side flange of the cabinet. Chiller cabinet should be located approx. 1/4" below and centered with the mounting plate above.
8. Install cover plate over the mounting plate, and slide each fountain and vandal proof bottle filler arm (if ordered) over the horizontal tongues protruding from the mounting plate and fasten arms with set screws pushing slightly against the cover plate.
9. Connect drain line to slip coupling at each fountain and connect supply line to filter housing.

Chiller Cabinet Mounting Detail



Typical Drain Plumbing Detail (In-Wall Drain Plumbing Provided By Others, Install Per Local Code)

