



Fountain bowl with cane apron and optional cover plate shown in standard stainless steel satin finish with "Soft Touch" button valve and bubbler in mirror finish

Dimensions in drawing subject to options selected.

### Features

- 14" diameter, 16 ga. fountain bowl
- No plastic parts
- 100% made in the USA
- Manufactured with lead-free materials
- Integral drain in bowl for ease of cleaning
- $\frac{1}{4}$ " steel support arm and wall bracket capable of supporting 500 lbs.
- Optional cover plate to match bowl finish or unlimited choice of powder coat colors
- Options include vandal proof bubblers, bottle fillers, bottle counters, finishes, bubbler valves, and more...

### Recommended Add-ons

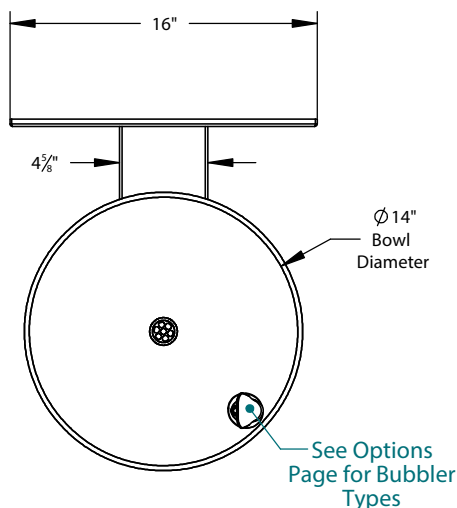
#### Chiller

Equip your fountain with a Filtrine point-of-use or remote chiller to cool your drinking water. We can help you select the most economical chiller model to fit your demand.

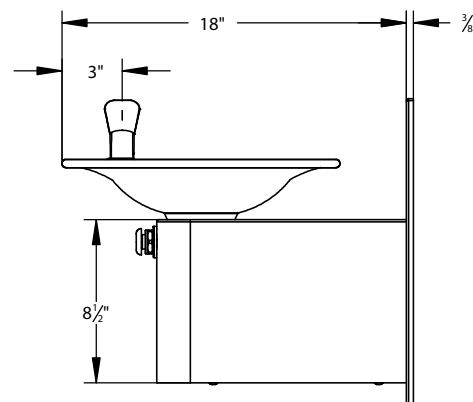
#### Purifier

Ensure that your drinking water is of the highest quality by adding a Filtrine Taste Master® purifier cabinet underneath the fountain or a remote purification system serving all fountains in the building.

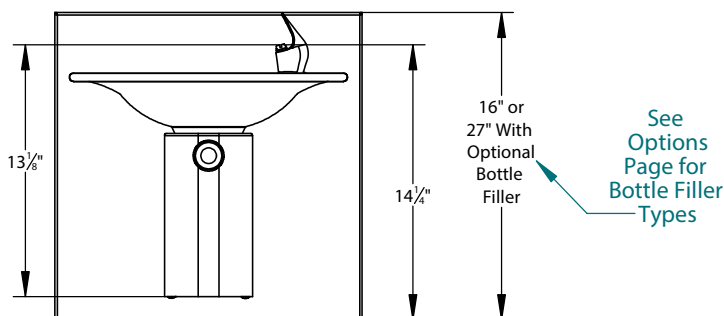
### Top View



### Side View



### Front View



For options, finishes and more see page 2

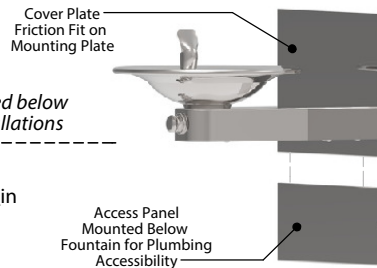


# Filtrine Drinking Water Non-Recessed Fountain Options

[S] - Standard  
 - ADA compliant

## ☐ Optional Cover Plate

- ☐ 11" Standard Height
  - ☐ 21" Optional Bottle Filler Height
- Note: Optional bottle filler can be selected below  
 Cover Plate not required for in-wall installations*



## ☐ Optional Access Panel

- ☐ 6" Standard Height ☐ Other Height \_\_\_\_\_ in

Material: \_\_\_\_\_  
 Finish: \_\_\_\_\_  
 Color: \_\_\_\_\_

• Includes mounting brackets for simple wall installation.

## ☐ Optional Vandal Proof Bottle Filler

(Choose only one optional filler)

- ☐ "Soft Touch" Valve ☐ Sensor Activation\*
- ☐ Bottle Rest - Located above lowest bowl for reduced splash and one handed operation
- ☐ Bottle Counter - Digital display of approx. number of bottles saved through fountain usage  
*Note: Only available with sensor activation*



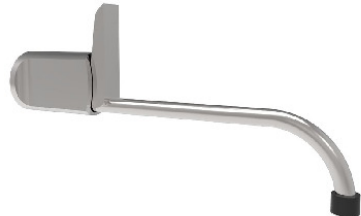
- Mounted 10" above lowest fountain bowl.
- Comes standard with bottom security panel assembled with tamper proof screws.
- Requires larger cover plate and mounting plate.
- Supply plumbing and mounting tongue for filler provided by Filtrine.

\*Not available with sensor activated bubbler on same bowl.

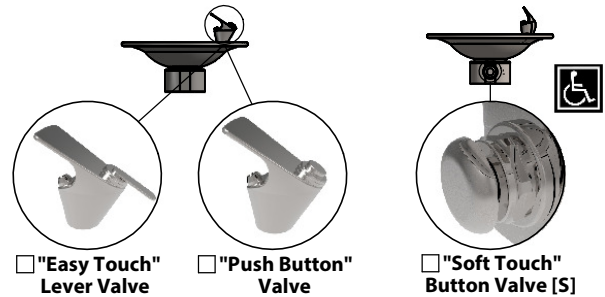
## ☐ Optional Integral "Push Back" Lever Bottle Filler

(Choose only one optional filler)

- Mounted 10" above lowest fountain bowl.
- Requires larger cover and mounting plates.
- Easy-to-use stainless steel "push back" lever.
- Supply plumbing and mounting fitting for filler provided by Filtrine.



## Bubbler Controls (Check One)



## ☐ Optional Fountain Sensor Activated Bubbler\*

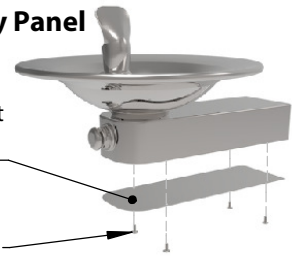


- Uses 4x -AA lithium batteries (included), runs approximately 400,000 activation cycles.
- Features automatic shutoff (30 sec).
- Helps prevent vandalism and water waste.

\*Not available with sensor activated bottle filler on same bowl.

## ☐ Optional Security Panel

16 ga. Plate Secured with Tamper-Resistant Screws for Added Security  
 4x-Tamper Resistant Screws



## Fountain Finish (Check One)

- ☐ Satin Stainless [S] ☐ Mirrored Stainless ☐ Satin Bronze ☐ Mirrored Bronze ☐ Statuary Bronze ☐ Oil-Rubbed Bronze

## Optional Cover Plate Finish (Check One)

- ☐ Satin Stainless [S] ☐ Mirrored Stainless ☐ Powder Coat \_\_\_\_\_ ☐ Satin Bronze ☐ Mirrored Bronze ☐ Statuary Bronze ☐ Oil-Rubbed Bronze

### Stainless

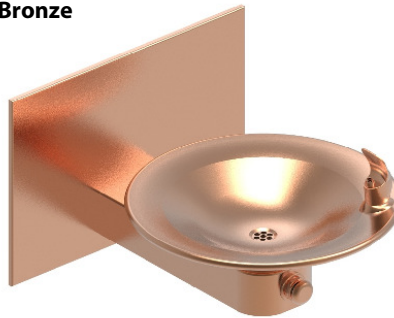


Satin Stainless Steel [S]

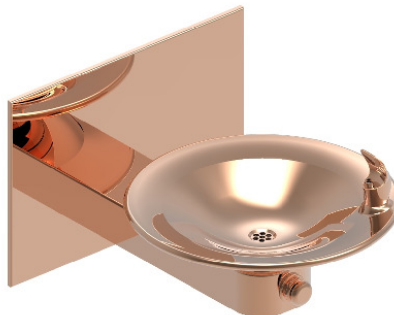


Mirrored Stainless Steel

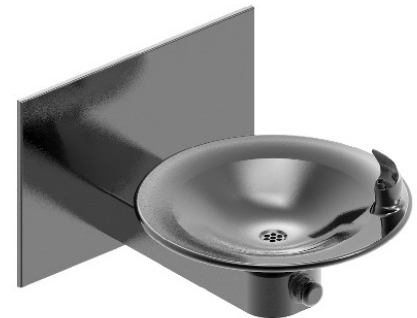
### Bronze



Satin Bronze



Mirrored Bronze



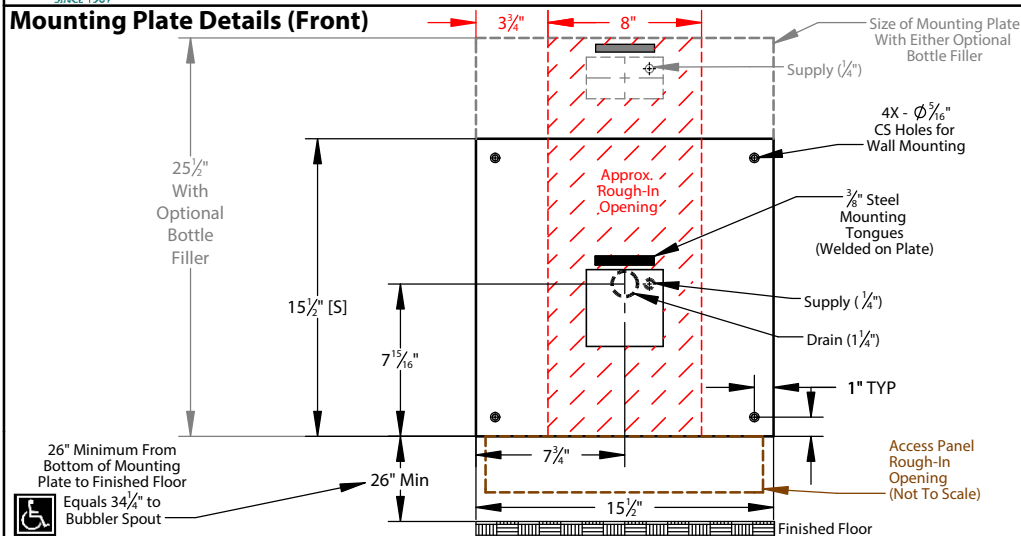
Oil Rubbed Bronze



Statuary Bronze

# Model 107-14-LS Drinking Water Installation Drawing

## Mounting Plate Details (Front)



### Approximate Rough-In Dimensions (hatched, left)

Model	Height	Width
Standard Plate	10 1/2"	8"
Bottle Filler Plate	25 1/2"	8"

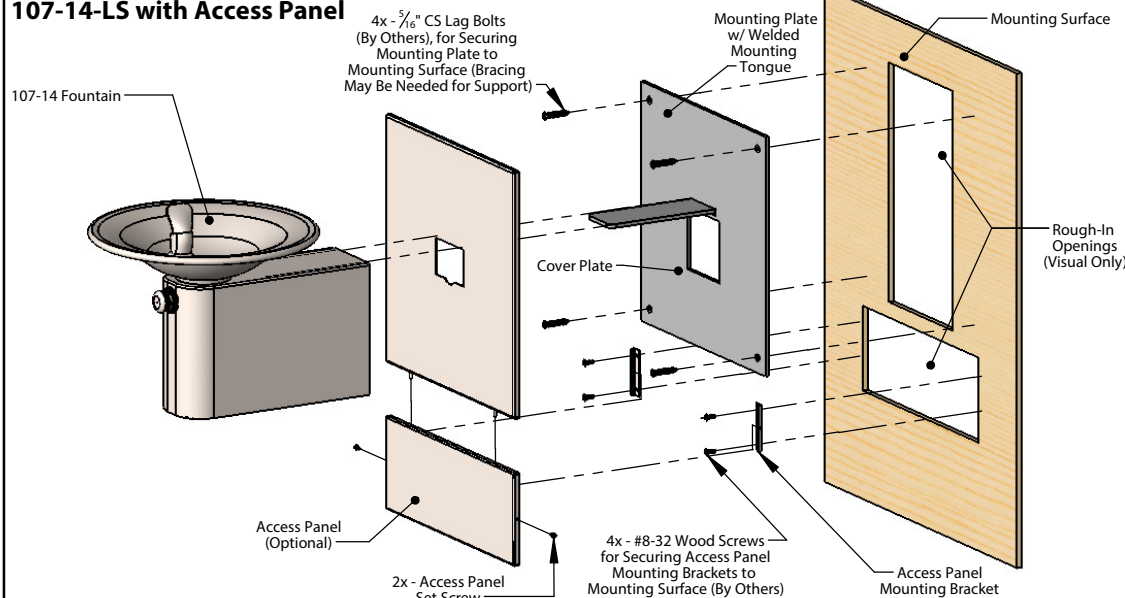
### Approximate Access Panel Rough-In Dimensions (outlined, left)

Model	Height	Width
Standard Panel	5 1/2" *	14 1/2"

\*If height specified, rough-in height will be 1/2" less than specified height

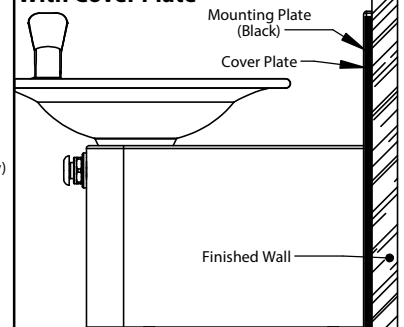
All views shown are for typical installation of 107-14-LS. Views, dimensions and diagrams may change for specific installation requirements.

## Exploded On-Wall Installation View 107-14-LS with Access Panel

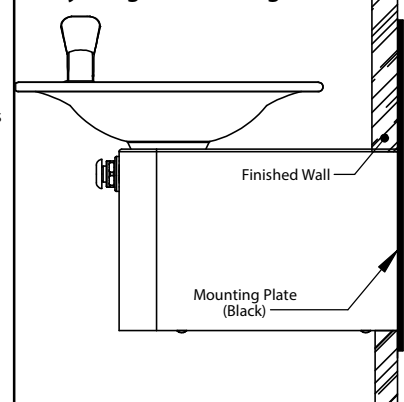


## 1/4" Steel Mounting Plate Can Be Mounted on Wall Surface or Inside Wall as Shown Below.

### On-wall Mounting Detail With Cover Plate



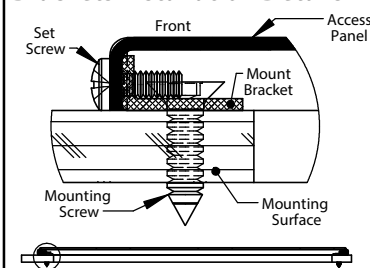
### In-wall Mounting Detail No Cover Plate (Only Rough Cut for Mtg Arm)



## Typical Assembly Instructions (Always Install Per Local Code)

- Cut rough opening as shown above and install blocking or fixture carrier as required to support the assembly.
- If optional access panel was ordered cut a separate rough opening (table, top right) extending below the fountain mounting plate.
- Run drain piping to center of openings on mounting plate and install drain trap in wall per local code.
- Run supply water line with service valve, if necessary.
- If optional bottle filler is included with order, attach piping assembly provided by Filtrine to the back side of the mounting plate with two screws and rubber gasket for standard bottle filler and flare connection for vandal proof bottle filler.
- Fasten mounting plate over rough opening with 5/16" countersunk lag bolts with bottom of plate 26" above the floor to meet ADA fountain height requirement of 34 1/4" to the bubbler spout.
- Install cover plate over the mounting plate for on-wall installations. Cover plate not required for in-wall installation.
- Slide each fountain and vandal proof bottle filler arm (if ordered) over the horizontal tongues protruding from the mounting plate and fasten arms with set screws pushing slightly against the cover plate or finished wall.
- Connect drain line to slip coupling and connect supply water connection.
- If your model includes the access panel, measure, mark and install the included "L" brackets with #8-32 screws and align panel to cover plate with alignment pins.

## Access Panel Mounting Brackets Installation Details



## Typical Drain Plumbing Detail (In-Wall Plumbing Provided By Others, Install Per Local Code)

