

107-16-HL-LS

Non-Recessed, High/Low Drinking Fountain With Cane Apron



Fountain bowl, cane apron, cover plate and optional access panel shown in standard #4 stainless steel satin finish with "Soft Touch" valves and bubblers in mirror finish

Dimensions in drawing subject to options selected.

Features

- [2] 16" diameter, 16 ga. fountain bowls
- No plastic parts
- 100% made in the USA
- Manufactured with lead-free materials
- Integral drain in bowl for ease of cleaning
- $\frac{1}{4}$ " steel support arm and wall bracket capable of supporting 500 lbs.
- Matching cover plate, finishes including unlimited powder coat colors
- Options include vandal proof bubblers, bottle fillers, sensor activation, bottle counters, finishes, bubbler valves, and more...

Recommended Add-ons

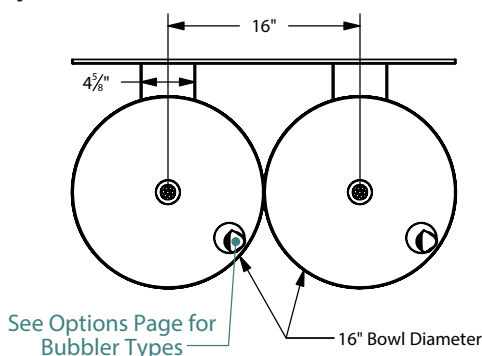
Chiller

Equip your fountain with a Filtrine point-of-use or remote chiller to cool your drinking water. We can help you select the most economical chiller model to fit your demand.

Purifier

Ensure that your drinking water is of the highest quality by adding a Filtrine Taste Master® purifier cabinet underneath the fountain or a remote purification system serving all fountains in the building.

Top View

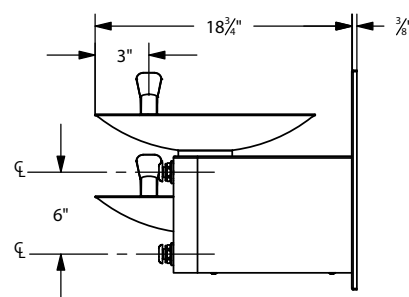


Select Low Fountain Location

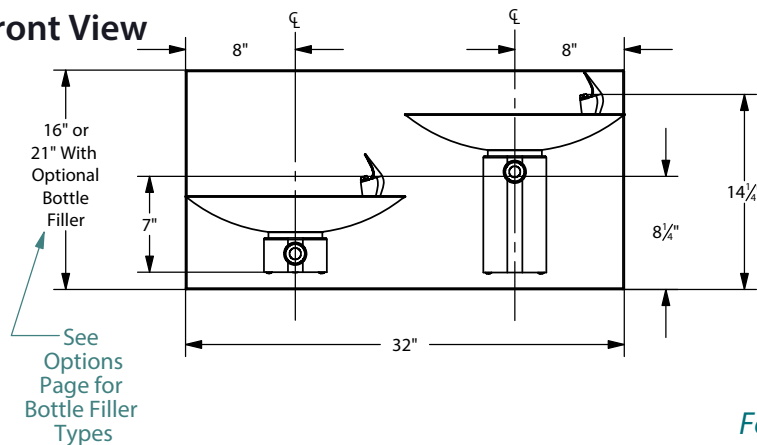
☐ Left [S]

☐ Right

Side View



Front View



For options, finishes and more see page 2



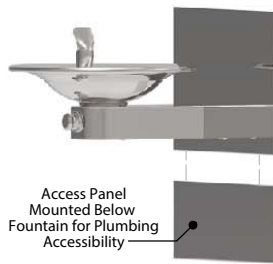
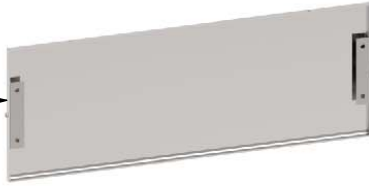
Filtrine Drinking Water Non-Recessed Fountain Options

[S] - Standard
 - ADA compliant

☐ Optional Access Panel

☐ 6" Standard Height ☐ Other Height _____ in

Easy Install
 Mounting Brackets
 Included



- Material and finish to match cover plate
- Includes mounting brackets for simple wall installation

☐ Optional Vandal Proof Bottle Filler

(Choose only one optional filler)

☐ "Soft Touch" Valve ☐ Sensor Activation*

☐ Bottle Rest - Located above lowest bowl for reduced splash and one handed operation

☐ Bottle Counter - Digital display of approx. number of bottles saved through fountain usage
Note: Only available with sensor activation



- Mounted 10" above lowest fountain bowl.
- Comes standard with bottom security panel assembled with tamper proof screws.
- Requires larger cover plate and mounting plate.
- Supply plumbing and mounting tongue for filler provided by Filtrine.

*Not available with sensor activated bubbler on same bowl.

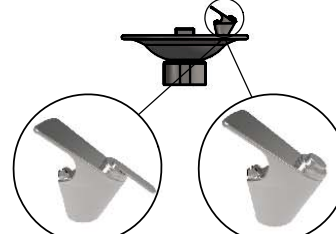
☐ Optional Integral "Push Back" Lever Bottle Filler

(Choose only one optional filler)

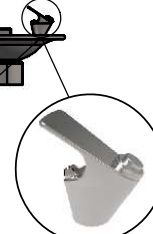
- Mounted 10" above lowest fountain bowl.
- Requires larger cover and mounting plates.
- Easy-to-use stainless steel "push back" lever.
- Supply plumbing and mounting fitting for filler provided by Filtrine.



Bubbler Controls (Check One)



☐ "Easy Touch"
 Lever Valve



☐ "Push Button"
 Valve



☐ "Soft Touch"
 Button Valve [S]

☐ Optional Fountain Sensor Activated Bubbler*

"Hands Free"
 Sensor
 Activator

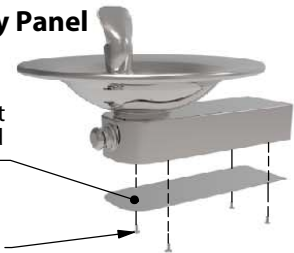


- Uses 4x -AA lithium batteries (included), runs approximately 400,000 activation cycles.
- Features automatic shutoff (30 sec).
- Helps prevent vandalism and water waste.

*Not available with sensor activated bottle filler on same bowl.

☐ Optional Security Panel

16 ga. Plate
 Secured with
 Tamper-Resistant
 Screws for Added
 Security



4x-Tamper
 Resistant Screws

Fountain Finish (Check One)

☐ Satin Stainless [S] ☐ Mirrored Stainless ☐ Satin Bronze ☐ Mirrored Bronze ☐ Statuary Bronze ☐ Oil-Rubbed Bronze

Optional Cover Plate Finish (Check One)

☐ Satin Stainless [S] ☐ Mirrored Stainless ☐ Powder Coat _____ ☐ Satin Bronze ☐ Mirrored Bronze ☐ Statuary Bronze ☐ Oil-Rubbed Bronze

Stainless



Satin Stainless Steel [S]



Mirrored Stainless Steel

Bronze



Satin Bronze



Mirrored Bronze



Oil Rubbed Bronze



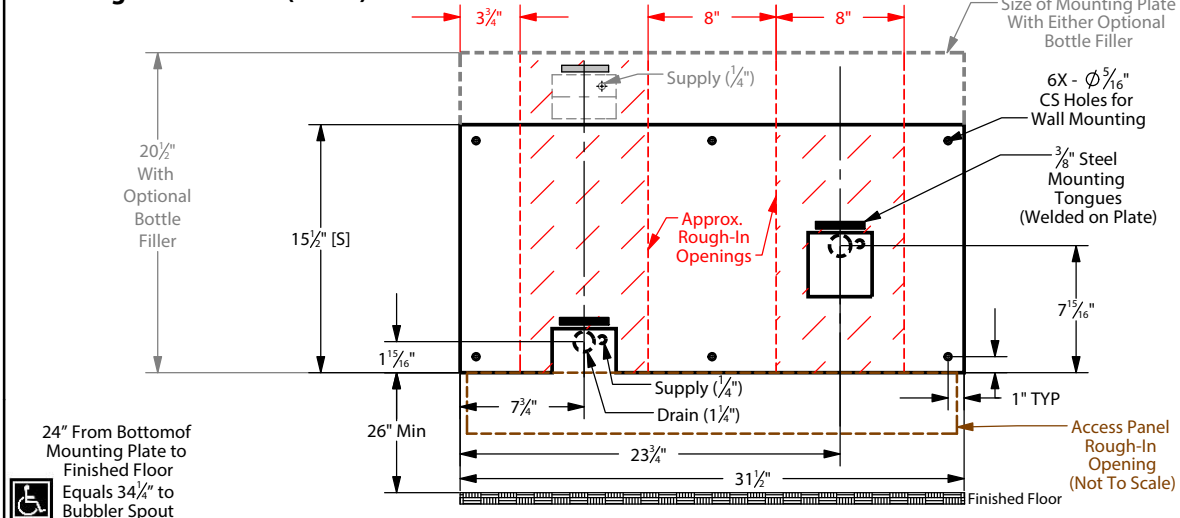
Statuary Bronze





Model 107-16-HL-LS Drinking Water Installation Drawing

Mounting Plate Details (Front)



Approximate Rough-In Dimensions (hatched, left)

Model	Height	Width
Standard Plate	15 1/2"	8"
Bottle Filler Plate	20 1/2"	8"

Approximate Access Panel Rough-In Dimensions (outlined, left)

Model	Height	Width
Standard Panel	5 1/2"*	30 1/2"

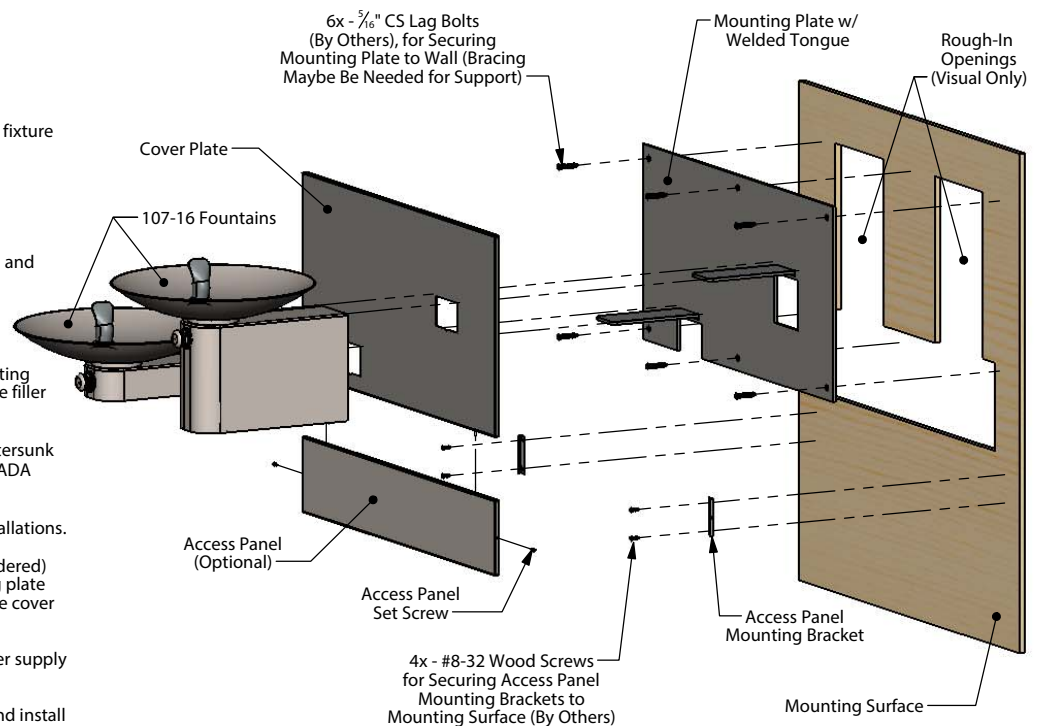
*If height specified, rough-in height will be 1/2" less than specified height

All views shown are for typical installation of 107-16-HL-LS. Views, dimensions and diagrams may change for specific installation requirements.

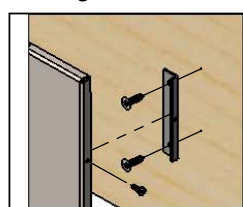
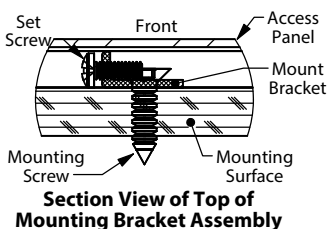
Exploded On-Wall Installation View 107-16-HL-LS with Access Panel

Typical Assembly Instructions (Always Install Per Local Code)

1. Cut rough opening as shown above and install blocking or fixture carrier as required to support the assembly.
2. If optional access panel was ordered cut a separate rough opening (table, top right) extending below the fountain mounting plate.
3. Run drain piping to center of openings on mounting plate, and install drain traps in wall per local code.
4. Run supply water lines with service valve, if necessary.
5. If optional bottle filler is included with order, attach piping assembly provided by Filtrine to the back side of the mounting plate with two screws and rubber gasket for standard bottle filler and flare connection for vandal proof bottle filler.
6. Fasten mounting plate over rough opening with 5/16" countersunk lag bolts with bottom of plate 26" above the floor to meet ADA fountain height requirement of 34 1/4" to the bubbler spout.
7. Install cover plate over the mounting plate for on-wall installations.
8. Slide each fountain and vandal proof bottle filler arm (if ordered) over the horizontal tongues protruding from the mounting plate and fasten arms with set screws pushing slightly against the cover plate or finished wall.
9. Connect drain plumbing to slip coupling and connect water supply connections.
10. If your model includes the access panel, measure, mark and install the included "L" brackets with #8-32 screws and align panel to cover plate with alignment pins.

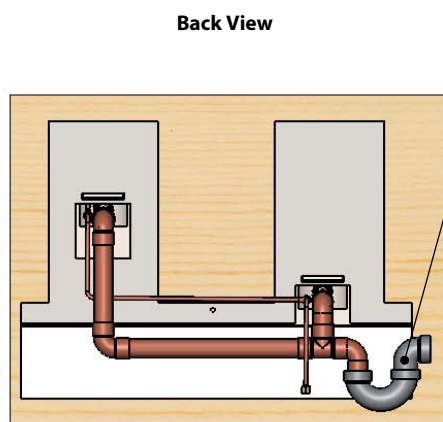


Access Panel Mounting Brackets Installation Details



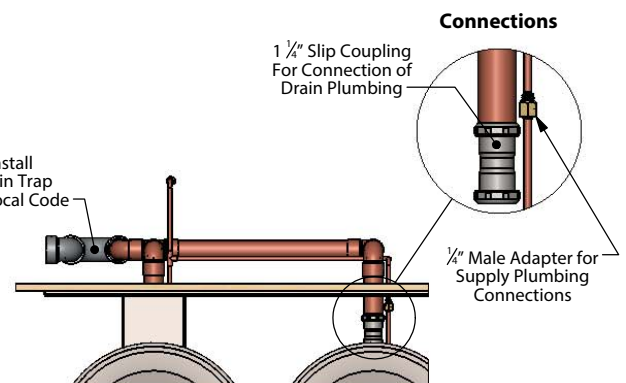
Cropped Exploded View

Typical Drain Plumbing Detail (In-Wall Plumbing Provided By Others, Install Per Local Code)



Install
Drain Trap
Per Local Code

Top View (Cropped)



Connections