

# FC-107-16

Non-Recessed Drinking Fountain with  
In-Wall Chiller and Taste Master® Purifier



Fountain bowl, cover plate and cabinet shown in standard stainless steel satin finish with "soft touch" button valves\* and bubbler\* in mirror finish

\*"Hands free" option available

Dimensions in drawing subject to options selected.

## Features

- 16" diameter, 16 ga. fountain bowls
- No plastic parts
- 100% made in the USA
- Manufactured with lead-free materials
- Integral drain in bowl for ease of cleaning
- 1/4" steel support arm and wall bracket capable of supporting 500 lbs.
- Matching cover plate finishes including unlimited powder coat colors
- Options include vandal proof bubblers, bottle fillers, bottle counters, finishes, bubbler valves, and more...

## FC-107-16 Models Include:

### Chiller: Model 66NL

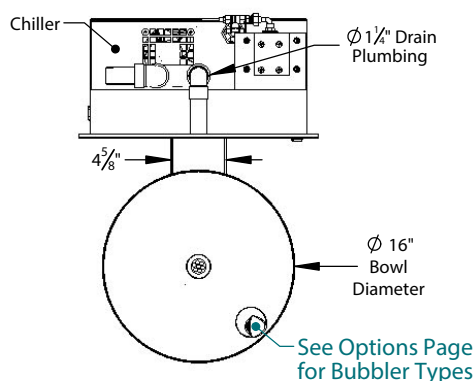
- **Water in:** 1/4" FPT
- **Cooling Capacity:** 5 GPH @ 50°F [10°C]\*
- **Storage:** 2 gal, insulated stainless steel tank
- **Refrigerant:** HFO R513a "Ozone Safe" - "Low GWP"
- **Electrical:** 115/60/1 or specify \_\_\_\_\_

\*Higher capacity chillers are available. Consult factory for correct model #s.

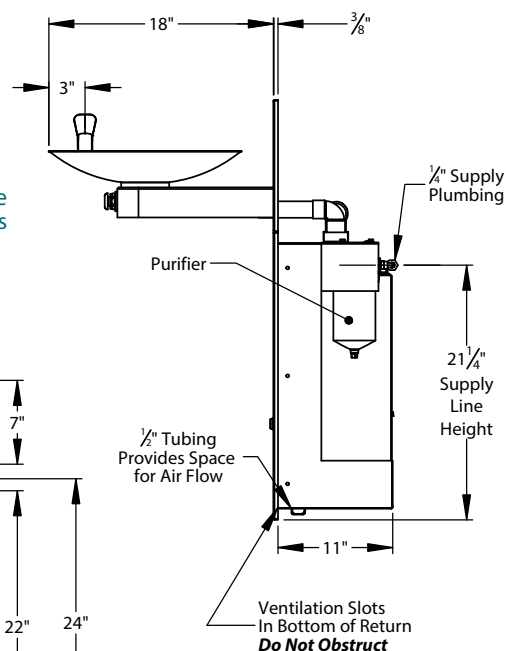
### Purifier: Taste Master® TMS1-0.5

- **Construction:** Stainless steel housing
- **Element:** Carbon block removes lead, particulates, cysts, chlorine, organic odors and tastes. Exclusive seal design negates bypassing and leaking.

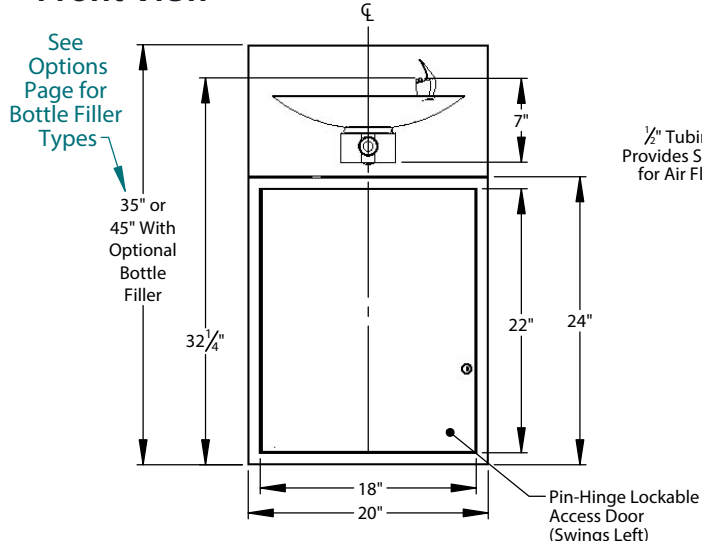
## Top View



## Side View



## Front View



For options, finishes  
and more see page 2



# Filtrine Drinking Water Non-Recessed Fountain Options

[S] - Standard  
 - ADA compliant

## ☐ Optional Vandal Proof Bottle Filler (Choose only one optional filler)

- ☐ "Soft Touch" Valve    ☐ Sensor Activation\*
- ☐ Bottle Rest - Located above lowest bowl for reduced splash and one handed operation
- ☐ Bottle Counter - Digital display of approx. number of bottles saved through fountain usage  
*Note: Only available with sensor activation*

- Mounted 10" above lowest fountain bowl.
- Comes standard with bottom security panel assembled with tamper proof screws.
- Requires larger cover plate and mounting plate.
- Supply plumbing and mounting tongue for filler provided by Filtrine.



## ☐ Optional Integral "Push Back" Lever Bottle Filler (Choose only one optional filler)

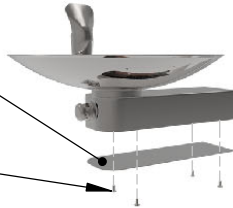
- Mounted 10" above lowest fountain bowl.
- Requires larger cover and mounting plates.
- Supply plumbing and mounting fitting for filler provided by Filtrine.
- Easy-to-use stainless steel "push back" lever.



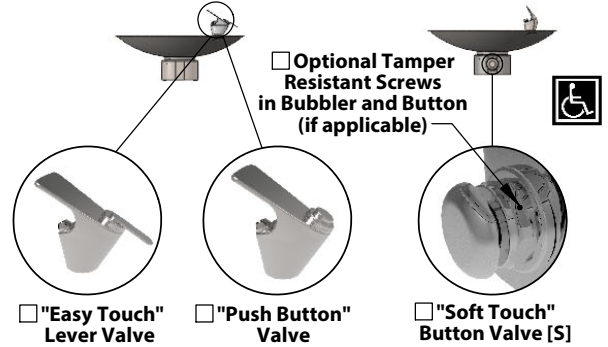
## ☐ Optional Security Panel

16 ga. Plate Secured with Tamper-Resistant Screws for Added Security

4x - Tamper Resistant Screws



## Bubbler Controls (Check One)



## ☐ Optional Fountain Sensor Activated Bubbler



"Hands Free" Sensor Activator

- Uses 4x -AA lithium batteries (included), runs approximately 400,000 activation cycles\*.

- Features automatic shutoff (30 sec).
- Helps prevent vandalism and water waste.

\*115/60/1 voltage available

## Fountain Finish (Check One)

☐ Satin Stainless [S]    ☐ Mirrored Stainless    ☐ Powder Coat \_\_\_\_\_    ☐ Satin Bronze    ☐ Mirrored Bronze    ☐ Statuary Bronze    ☐ Oil-Rubbed Bronze

## Cover Plate Finish (Check One)

☐ Satin Stainless [S]    ☐ Mirrored Stainless    ☐ Powder Coat \_\_\_\_\_    ☐ Satin Bronze    ☐ Mirrored Bronze    ☐ Statuary Bronze    ☐ Oil-Rubbed Bronze

### Stainless

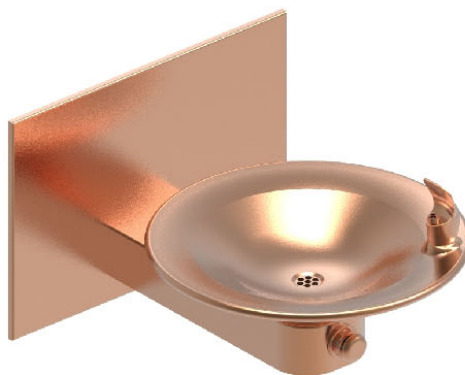


Satin Stainless Steel [S]

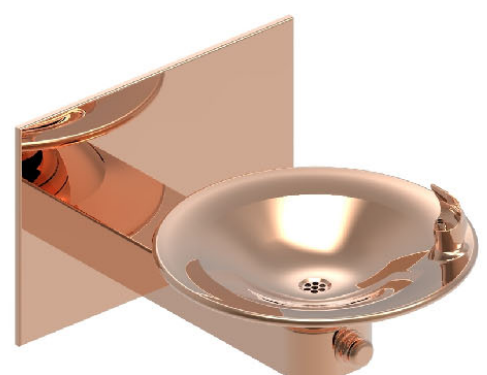


Mirrored Stainless Steel

### Bronze



Satin Bronze



Mirrored Bronze

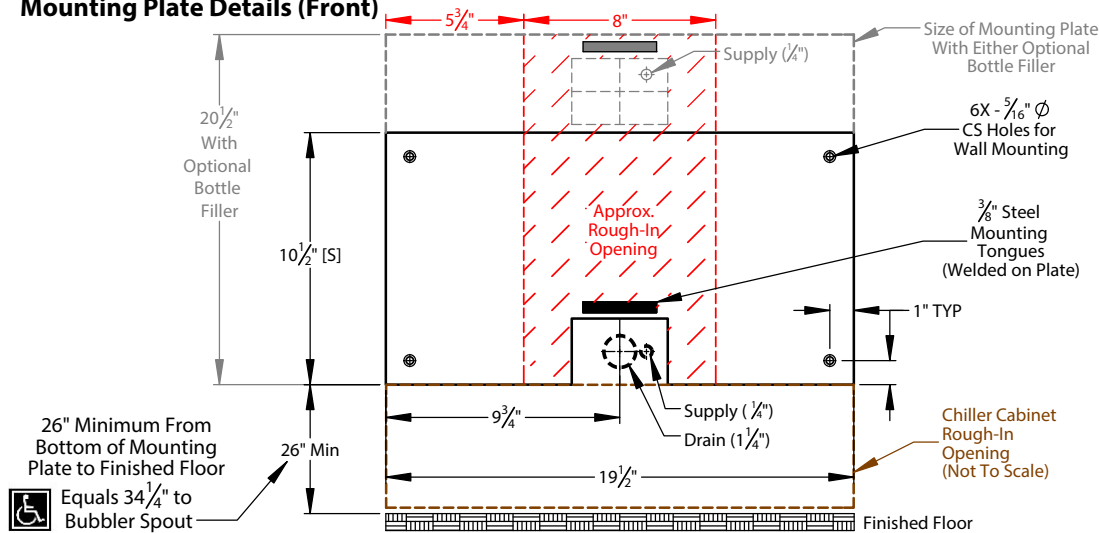


Oil Rubbed Bronze



Statuary Bronze

## Mounting Plate Details (Front)



### Approximate Rough-In Dimensions (hatched, left)

Model	Height	Width
Standard Plate	10 1/2"	8"
Bottle Filler Plate	20 1/2"	8"

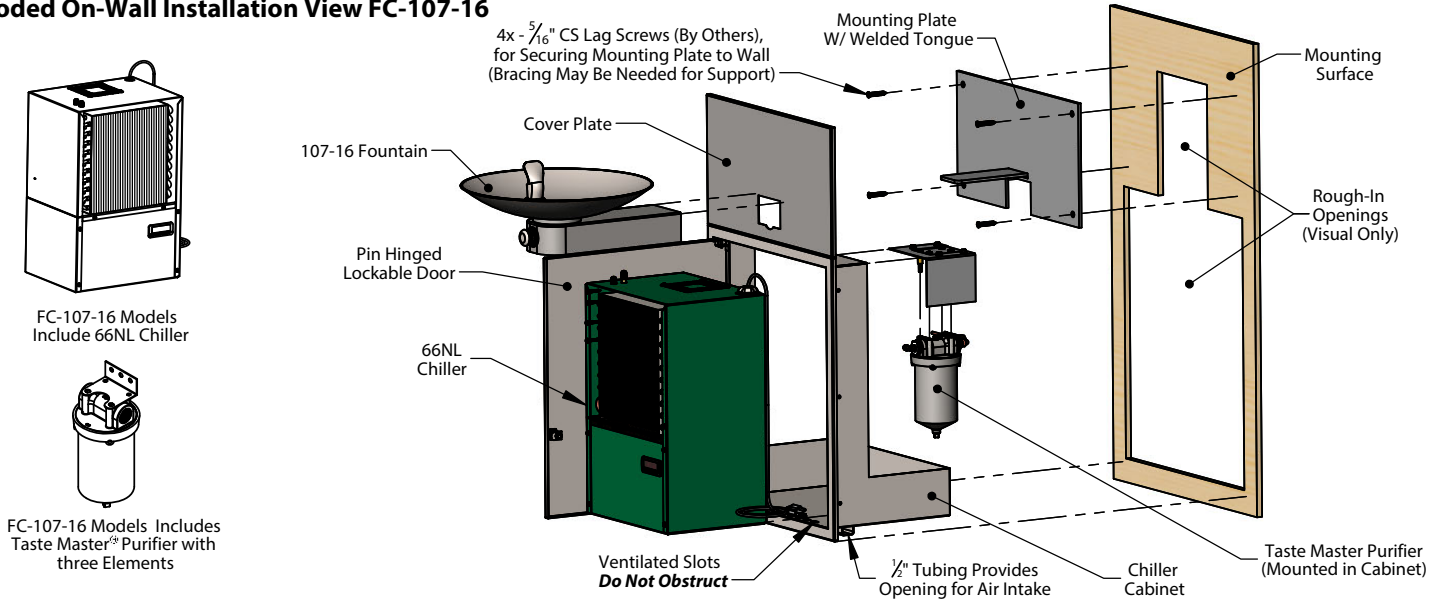
### Approximate Chiller Cabinet Rough-In Dimensions (outlined, left)

Model	Height	Width
Chiller Cabinet	23" *	19"

\*Wall opening must be 11" deep to allow room for purifier and piping

All views shown are for typical installation of FC-107-16. Views, dimensions and diagrams may change for specific installation requirements.

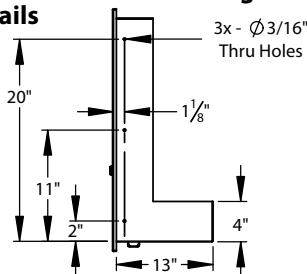
## Exploded On-Wall Installation View FC-107-16



## Typical Assembly Instructions (Always Install Per Local Code)

1. Cut rough opening per install requirements (rough opening example shown above) and install blocking or fixture carriers as required to support the drinking fountain mounting plate and purifier cabinet in a minimum 11" deep wall.
2. Cut a separate rough opening extending below the fountain mounting plate (23" high x 19" wide maximum rough in opening dimensions).
3. Run drain pipe to center of opening on mounting plate and install drain trap in wall per local code.
4. Fasten mounting plate over rough opening with 5/16" countersunk lag bolts with bottom of plate 26" above the floor to meet ADA fountain height requirements of 34 1/4" to bubbler spout.
5. Install chiller cabinet in rough opening below the mounting plate and slide the cover plate over the mounting plate. Using screws, fasten the cabinet to the mounting surface through the side flange of the cabinet.
6. Install cover plate over mounting plate, and slide each fountain and vandal proof bottle filler arm (if ordered) over the horizontal tongues protruding from the mounting plate and fasten arms with set screws pushing slightly against the cover plate.
7. Install chiller into cabinet, making sure the temperature controller is facing toward cabinet door. Do not plug in cooler until Step 10 is completed and tank is full of water.
8. Connect drain line with trap to slip couplings in fountain arms. Connect provided supply line from purifier to chiller and from chiller to purifier and bottle filler (if applicable). Install security panels under arms and bottle filler (if applicable) using tamper proof screws.
9. Connect building water line to 1/4" FPT stop valve at purifier inlet.
10. Install filter cartridge in housing per instructions on filter. Open stop valve to fill filter housing and purge air out the vent. Activate a bubbler and hold until all air in cooler tank is purged.
11. Plug chiller to a 15 amp GFI circuit after the tank and piping system are completely full of water.

## Chiller Cabinet Mounting Details



## Typical Drain Plumbing Detail (In-Wall Plumbing Provided By Others, Install Per Local Code)

