

FCC-90MOD-WC

Non-Recessed Wheel-Chair Accessible Drinking Fountain with In-Wall Chiller and Taste Master® Purifier



Fountain bowl, cover plate, chiller cabinet and optional bottle filler shown in standard stainless steel satin finish with a "Soft Touch" button valve, bubbler and in mirror finish

Dimensions in drawing subject to options selected.

Features

- 10½" diameter, 16 ga. fountain bowl
- No plastic parts
- 100% made in the USA
- Manufactured with lead-free materials
- Integral drain in bowl for ease of cleaning
- ¼" steel support arm and wall bracket capable of supporting 500 lbs.
- Matching cover plate and cabinet finishes including unlimited powder coat colors
- Options include vandal proof bubblers, bottle fillers, bottle counters, finishes, bubbler valves, and more...

FCC-90MOD-WC Models Include:

Chiller: Model 67A

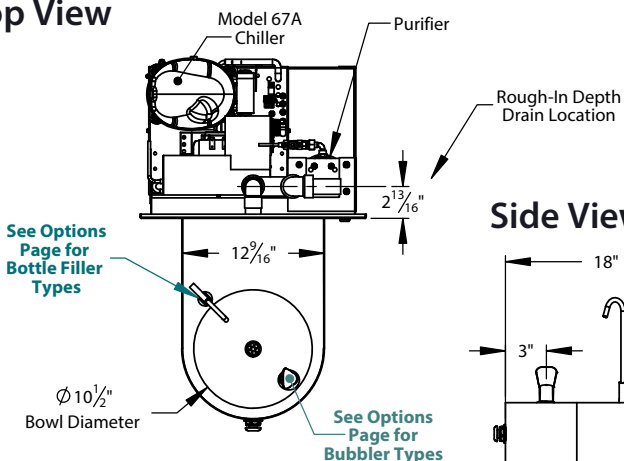
- **Water in:** ¼" FPT
- **Cooling Capacity:** 6 GPH @ 50°F [10°C]*
- **Storage:** 1 gal, insulated stainless steel tank
- **Refrigerant:** HFO R513A "Ozone Safe - Low GWP"
- **Electrical:** 115/60/1 or specify _____

*Higher capacity chillers are available, consult factory for correct model #s.

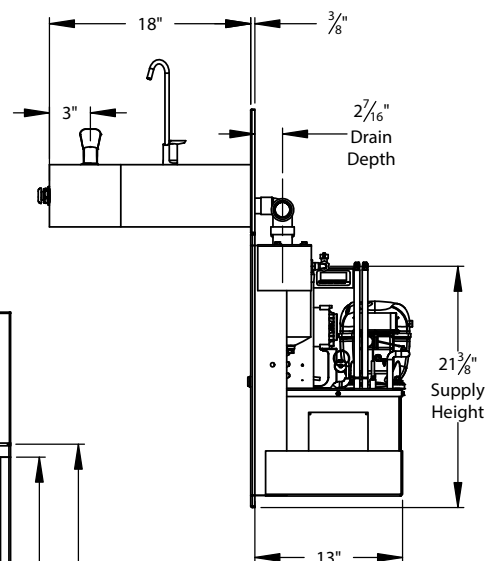
Purifier: Taste Master® TMS1-0.5

- **Construction:** Stainless steel housing
- **Element:** Carbon block removes particulates, cysts, chlorine, organic odors and tastes. Exclusive seal design negates bypassing and leaking.

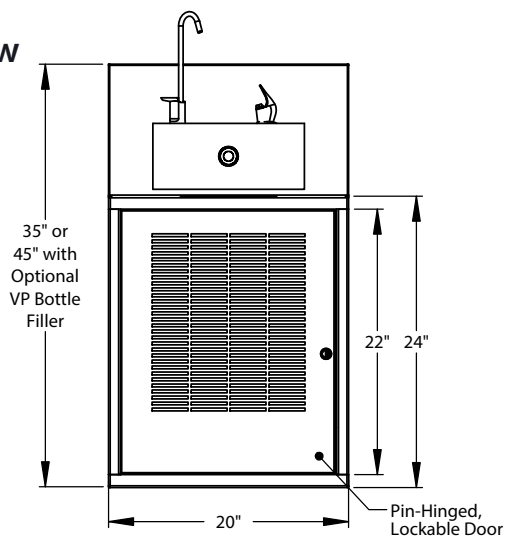
Top View



Side View



Front View



For options, finishes
and more see page 2



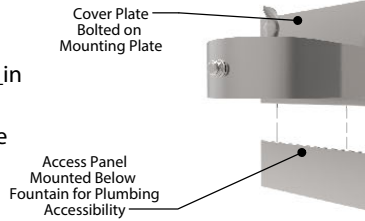
Filtrine Drinking Water Non-Recessed Fountain Options

[S] - Standard
 - ADA compliant

☐ Optional Access Panel

☐ 6" Standard Height ☐ Other Height _____ in

- Material, finish and width to match cover plate
- Includes mounting brackets for simple wall installation



☐ Optional Vandal Proof Bottle Filler

☐ "Soft Touch" Valve ☐ Sensor Activation*



- Mounted 10½" above lowest fountain bowl.
- Comes standard with bottom security panel assembled with tamper proof screws.
- Requires larger cover plate and mounting plate.
- Supply plumbing and mounting tongue for filler provided by Filtrine.

*Not available with sensor activated bubbler on same bowl.

☐ Optional Gooseneck Bottle Filler (Check One)

☐ "Push Back" Lever style (9 ¼" high)

☐ "Push Button" Valve (12 ¾" high)



- Mounted on back of lowest fountain bowl.
- Easy-to-use stainless steel "Push Back" lever.
- Supply plumbing and mounting fitting for filler provided by Filtrine.
- *Tamper resistant fillers available upon request*

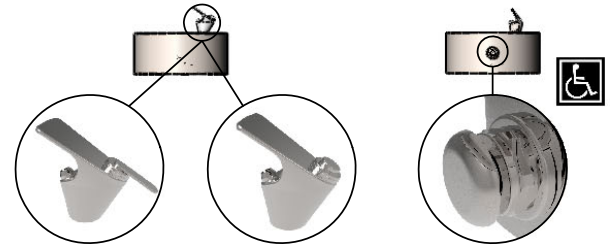
Model CC-153



- Mounted on back of lowest fountain bowl.
- Easy-to-use "push button" valve.
- Supply plumbing and mounting fitting for filler provided by Filtrine.
- Built-in flow adjustment.
- *Tamper resistant fillers available upon request*

Model CC-161

Bubbler Controls (Check One)



☐ "Easy Touch" Lever Valve

☐ "Push Button" Valve

☐ "Soft Touch" Button Valve [S]

☐ Optional Fountain Sensor Activated Bubbler*

"Hands Free" Sensor Activator



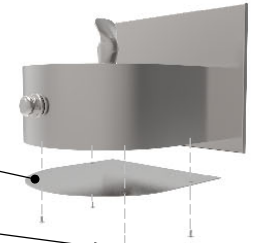
- Uses 4x-AA lithium batteries (included), runs approximately 400,000 activation cycles.
- Features automatic shutoff (30 sec).
- Helps prevent vandalism and water waste.

*Not available with sensor activated bottle filler on same bowl.

☐ Optional Security Panel

16 ga. Plate Secured with Tamper-Resistant Screws for Added Security

4x-Tamper Resistant Screws



Fountain Finish (Check One)

☐ Satin Stainless [S] ☐ Mirrored Stainless ☐ Satin Bronze ☐ Mirrored Bronze ☐ Statuary Bronze ☐ Oil-Rubbed Bronze

Optional Cover Plate Finish (Check One)

☐ Satin Stainless [S] ☐ Mirrored Stainless ☐ Powder Coat _____ ☐ Satin Bronze ☐ Mirrored Bronze ☐ Statuary Bronze ☐ Oil-Rubbed Bronze

Stainless

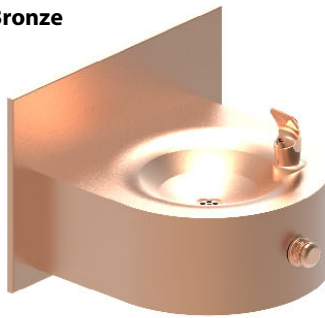


Satin Stainless Steel [S]

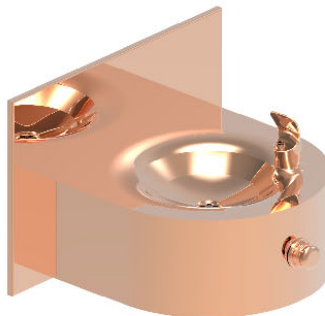


Mirrored Stainless Steel

Bronze



Satin Bronze



Mirrored Bronze



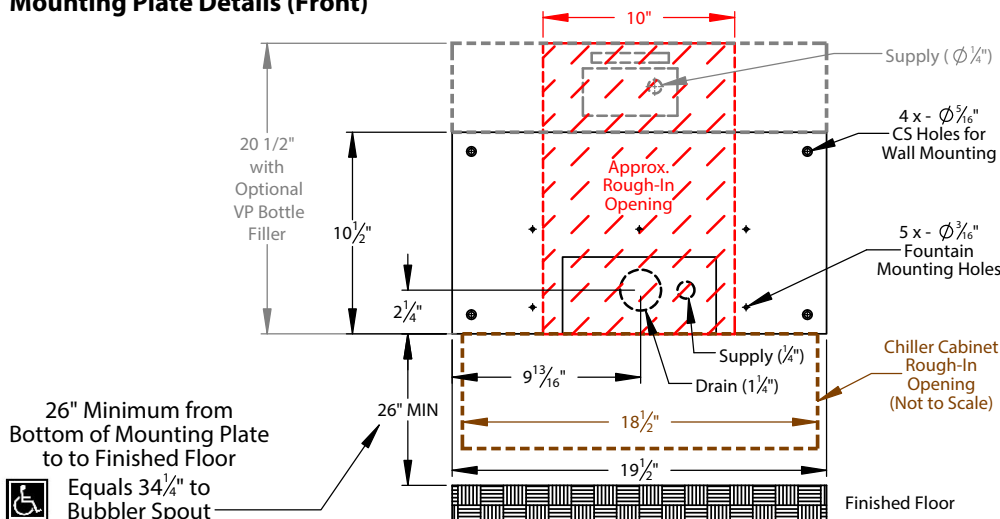
Oil Rubbed Bronze



Statuary Bronze



Mounting Plate Details (Front)



Approximate Rough-In Dimensions (hatched, left)

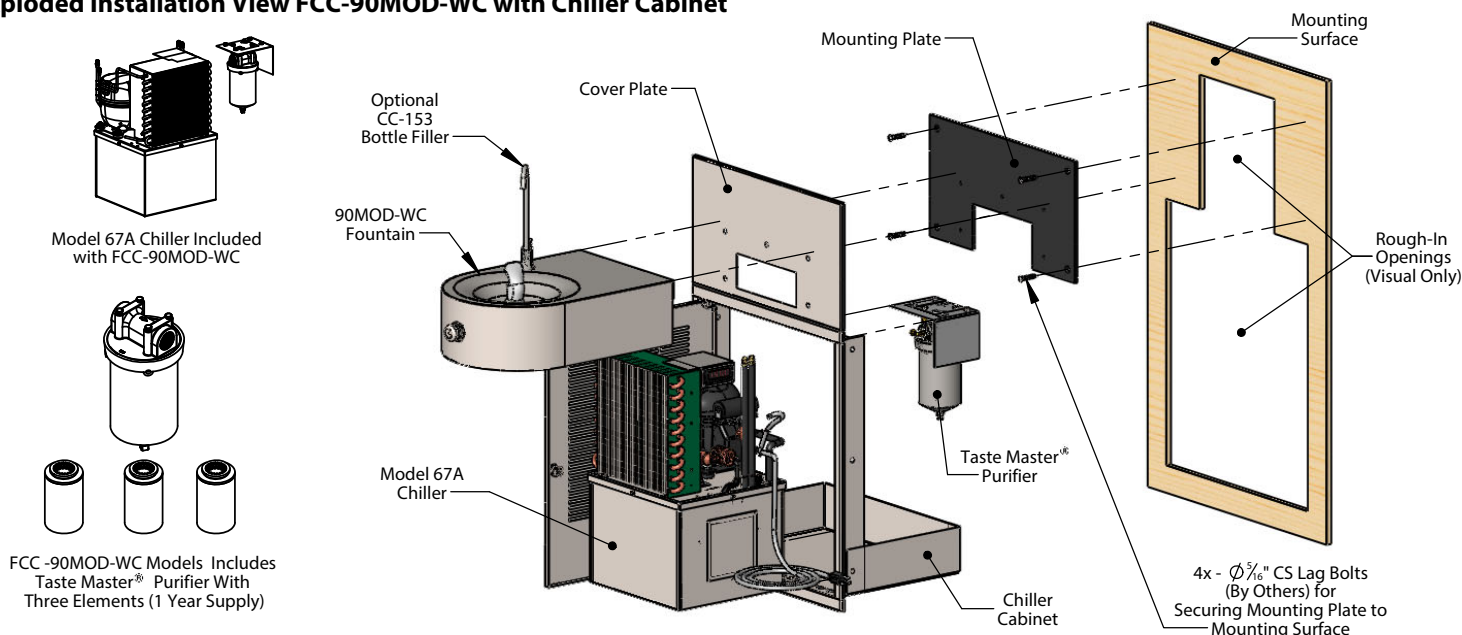
Model	Height	Width
Standard Plate	10 1/2"	10"
Bottle Filler Plate	20 1/2"	10"

Approximate Chiller Cabinet Rough-In Dimensions (outlined, left)

Model	Height	Width
Chiller Cabinet*	23"	18 1/2"

All views shown are for Model FCC-90MOD-WC. Views, dimensions and diagrams may change for specific installation requirements.

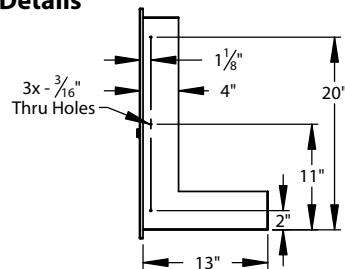
Exploded Installation View FCC-90MOD-WC with Chiller Cabinet



Typical Assembly Instructions (Always Install Per Local Code)

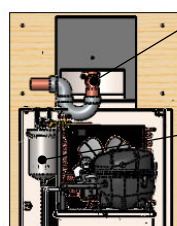
1. Cut rough opening per install requirements (rough opening example shown above) and install blocking or fixture carriers as required to support the drinking fountain mounting plate and purifier cabinet in a minimum 14" deep wall.
2. Cut a separate rough opening extending below the fountain mounting plate (23" high x 18 1/2" wide maximum rough in opening dimensions).
3. Run drain pipe to center of openings on mounting plate and install drain trap in wall per local code.
4. Run supply water line to mounted Taste Master® filter housing.
5. If optional bottle filler is included with order, attach piping assembly provided by Filtrine to the back side of the mounting plate with two screws and rubber gasket for standard bottle filler and flare connection for vandal proof bottle filler.
6. Fasten mounting plate over rough opening with 5/16" countersunk lag bolts with bottom of plate 26" above the floor to meet ADA fountain height requirement of 34 1/4" to the bubbler spout.
7. Install chiller cabinet in rough opening below the mounting plate and slide the cover plate over the mounting plate. Using screws, fasten the cabinet to the mounting surface through the side flange of the cabinet.
8. Slide the fountain and vandal proof bottle filler arm (if ordered) over the horizontal tongues protruding from the mounting plate and fasten arms with set screws pushing slightly against the cover plate.
9. Connect drain line to slip coupling and connect and secure all supply water connections.

Chiller Cabinet Installation Details

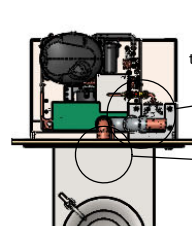


Typical Drain Plumbing Detail (In-Wall Drain Plumbing Provided By Others, Install Per Local Code)

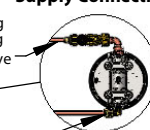
Back View (Cropped)



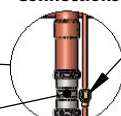
Top View (Cropped)



Taste Master® Supply Connections



Fountain Connections



Unions, Elbows, and Adapters for Taste Master® Purifier provided by Filtrine