



90MOD-TM DRINKING FOUNTAIN

with In-Wall Tastemaster Purifier



STAINLESS STEEL FOUNTAIN

FOUNTAIN & COVER PLATE FINISH

☐ Satin ☐ Mirror ☐ Powder Coat

BUBBLER FINISH

☐ Mirror [S] ☐ Satin

BRONZE FOUNTAIN

FOUNTAIN & COVER PLATE FINISH

☐ Satin ☐ Mirror

☐ Statuary ☐ Oil rubbed

BUBBLER FINISH

☐ Satin [S] ☐ Mirror

☐ Statuary ☐ Oil rubbed

BUBBLER: TYPE

☐ Separate "Soft Touch" button valve [S]

☐ Integral push button valve

☐ Integral "Easy Touch" lever valve

☐ Separate Side Mount lever valve

BUBBLER: VANDAL PROOF [O]

☐ Secured to fountain with vandal proof screws

"HANDS-FREE" PHOTOCELL ACTIVATION [O]

☐ Includes [4] Lithium AA batteries – approx. 400,000 activation cycles. 30 sec. automatic shutoff helps prevent vandalism and water waste.

BOTTLE FILLER: VANDAL PROOF [O]

☐ Features "Soft Touch" valve. Panel on bottom of support arm secured with vandal proof screws. Mounted on cover plate.

BOTTLE FILLER: LEVER VALVE [O]

☐ Push back valve. Mounted on cover plate

SECURITY PANEL: COVERS BOTTOM OF FTN [O]

☐ Secured with vandal proof screws

TASTEMASTER PURIFIER [WATER IN: 1/4" FPT]

MODEL: TM1-0.5

HOUSING: Food grade poly liner with stainless steel shell.

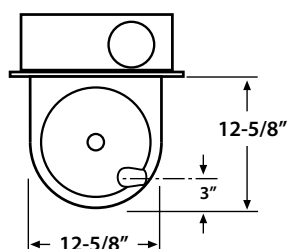
ELEMENT: Carbon block removes particles, organic odors and tastes, chlorine odor and taste and waterborne pathogens

BELOW FTN MOUNTING: In-wall, framed stainless steel tray with key lock access door.

[S] = STANDARD / [O] = OPTIONAL

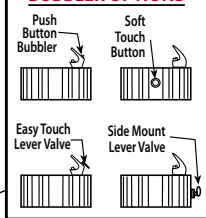
REFERENCE INFORMATION - PLEASE CONTACT FILTRINE FOR QUOTE OR SUBMITTAL

TOP VIEW

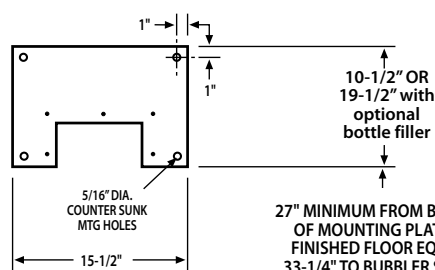


ROUGH-N OPENING
FOR PURIFIER
15"W X 6"D X 15"H

BUBBLER OPTIONS



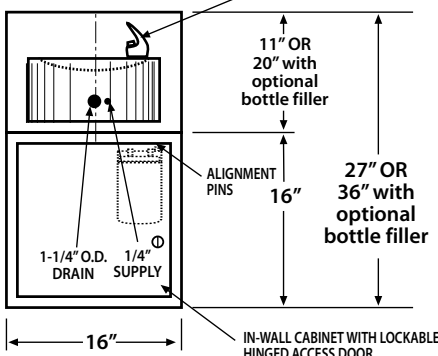
MOUNTING PLATE 1/4" STEEL



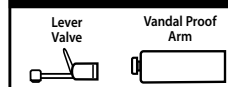
27" MINIMUM FROM BOTTOM
OF MOUNTING PLATE TO
FINISHED FLOOR EQUALS
33-1/4" TO BUBBLER SPOUT



FRONT VIEW with COVER PLATE



FILLER OPTIONS



END VIEW

