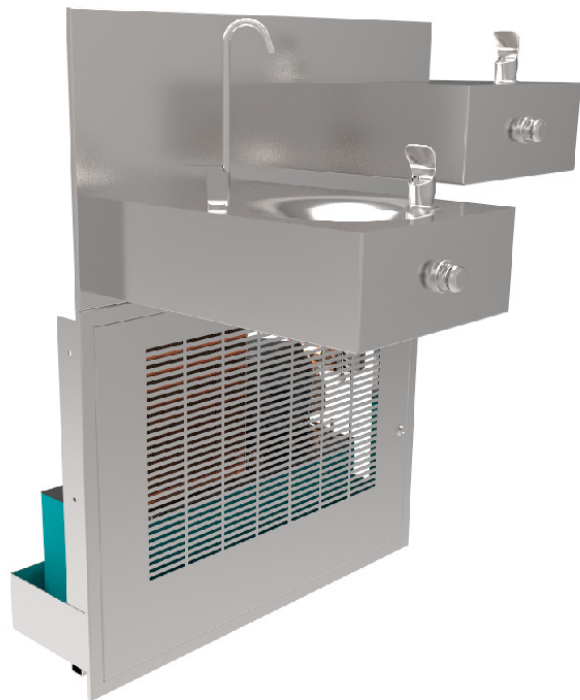


Model FCC-90-HL

Non-Recessed, High/Low Drinking Fountain
With In-Wall Chiller and Taste Master® Purifier



Fountain bowls, cover plate and purifier cabinet shown in standard #4 satin stainless steel finish with "Soft Touch" valves, bubblers and optional gooseneck bottle filler in mirror finish and a chiller/Taste Master® purifier (in cabinet)

Dimensions in drawing subject to options selected.

Features

- 10½" diameter, 16 ga. fountain bowls
- No plastic parts
- 100% made in the USA
- Manufactured with lead-free materials
- Integral drain in bowl for ease of cleaning
- Continuous weld construction leaving no visible seams
- Matching cover plate (or with other finishes including unlimited powder coat colors)
- Options include vandal proof bubblers, bottle fillers, sensor activation, finishes, bubbler valves and much more...

FCC-90-HL Models Include:

Chiller: Model 56A

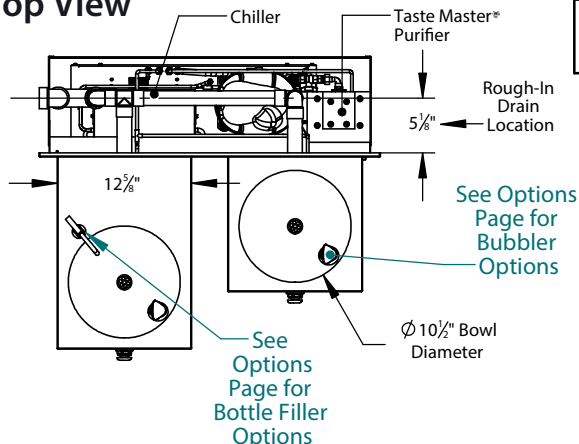
- **Water in:** ¼" FPT
- **Cooling Capacity:** 6 GPH @ 50°F [10°C]*
- **Storage:** 2 gal, insulated stainless steel tank
- **Refrigerant:** HFC R134a "Ozone Safe"
- **Electrical:** 115/60/1 or specify _____

*Higher capacity chillers are available consult factory for correct model #s.

Purifier: Taste Master® TMS1-0.5

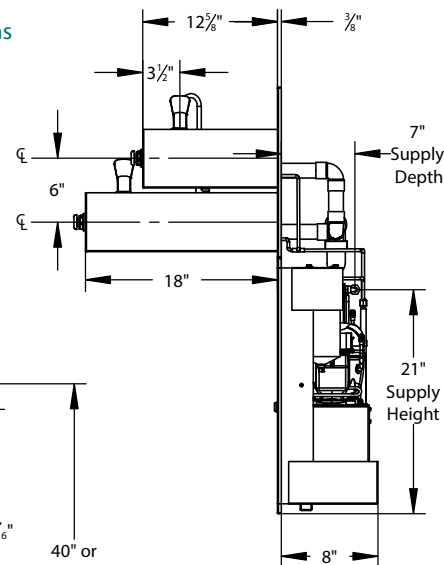
- **Construction:** Stainless steel housing
- **Element:** 0.5 micron carbon block removes particulates, cysts, chlorine, organic odors and tastes. Exclusive seal design negates bypassing and leaking.

Top View

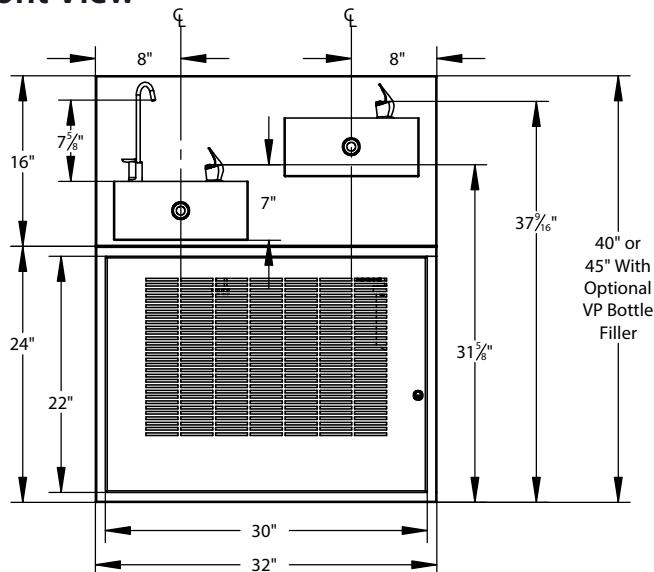


Select Low Fountain Location
☐ Left [S] ☐ Right

Side View



Front View



*For options, finishes
and more see page 2*

☐ Optional Vandal Proof Bottle Filler

☐ "Soft Touch" Valve ☐ Sensor Activation*

- Mounted 10½" above lowest fountain bowl.
- Comes standard with bottom security panel assembled with tamper proof screws.
- Requires larger cover plate and mounting plate.
- Supply plumbing and mounting tongue for filler provided by Filtrine.



*Not available with sensor activated bubbler on same bowl.

☐ Optional Gooseneck Bottle Fillers (Check One)

☐ "Push Back" Lever style (9¼" high) ☐ "Push Button" Valve (12¾" high)



- Mounted on back of lowest fountain bowl
- Easy-to-use stainless steel "Push Back" lever
- Supply plumbing and mounting fitting for filler provided by Filtrine
- Tamper resistant fillers available upon request

Model CC-153



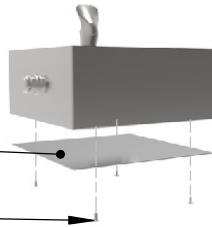
- Mounted on back of lowest fountain bowl
- Easy-to-use "push button" valve
- Supply plumbing and mounting fitting for filler provided by Filtrine
- Built-in flow adjustment
- Tamper resistant fillers available upon request

Model CC-161

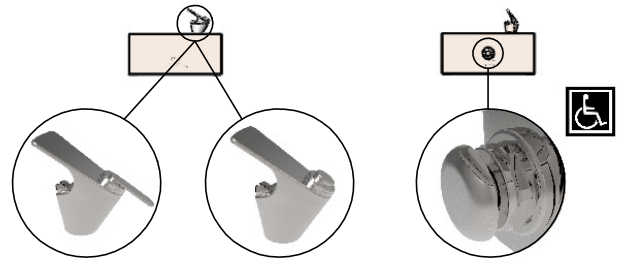
☐ Optional Security Panel

16 ga. Plate
Secured with
Tamper-Resistant
Screws for Added
Security

4x-Tamper
Resistant Screws



Bubbler Controls (Check One)



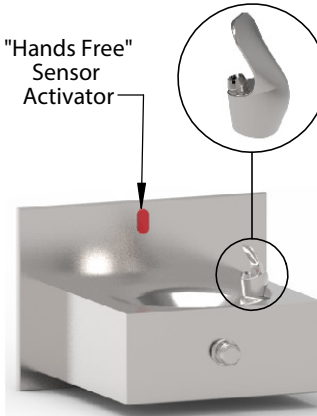
☐ "Easy Touch"
Lever Valve

☐ "Push Button"
Valve

☐ "Soft Touch"
Button Valve [S]

☐ Optional Fountain Sensor Activated Bubbler*

"Hands Free"
Sensor
Activator



- Uses 4x-AA lithium batteries (included), runs approximately 400,000 activation cycles.
- Features automatic shutoff (30 sec).
- Helps prevent vandalism and water waste.

*Not available with sensor activated bottle filler on same bowl.

Fountain Finish (Check One)

☐ Satin Stainless [S] ☐ Mirrored Stainless ☐ Satin Bronze ☐ Mirrored Bronze ☐ Statuary Bronze ☐ Oil-Rubbed Bronze

Optional Cover Plate Finish (Check One)

☐ Satin Stainless [S] ☐ Mirrored Stainless ☐ Powder Coat _____ ☐ Satin Bronze ☐ Mirrored Bronze ☐ Statuary Bronze ☐ Oil-Rubbed Bronze

Stainless

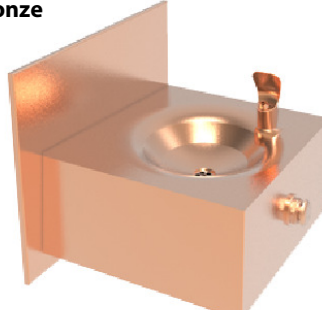


Satin Stainless Steel [S]



Mirrored Stainless Steel

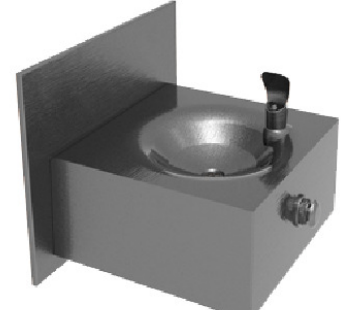
Bronze



Satin Bronze



Mirrored Bronze



Oil Rubbed Bronze

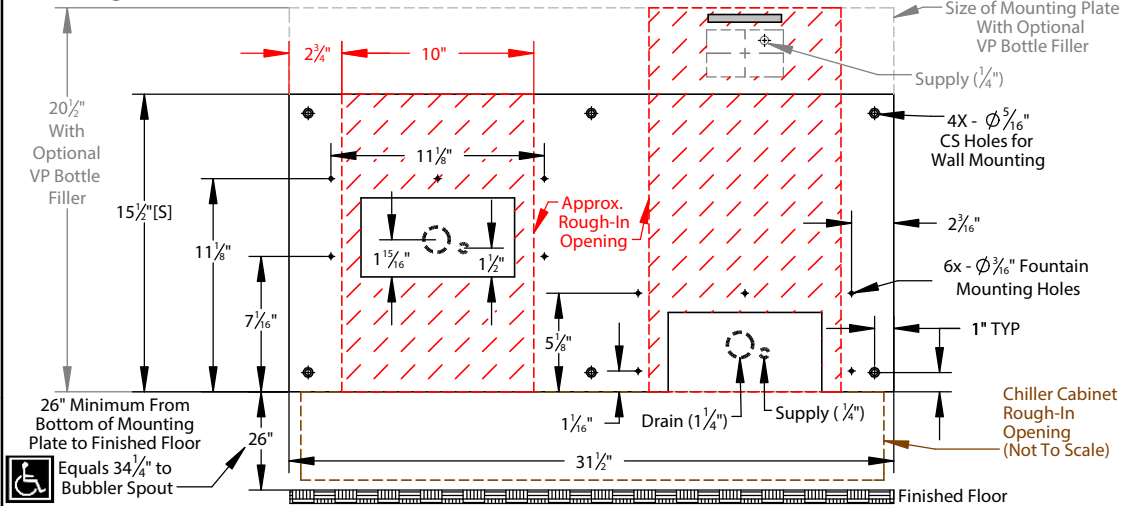


Statuary Bronze



FCC-90-HL Drinking Water Installation Drawing

Mounting Plate Details (Front)



Approximate Rough-In Dimensions (hatched, left)

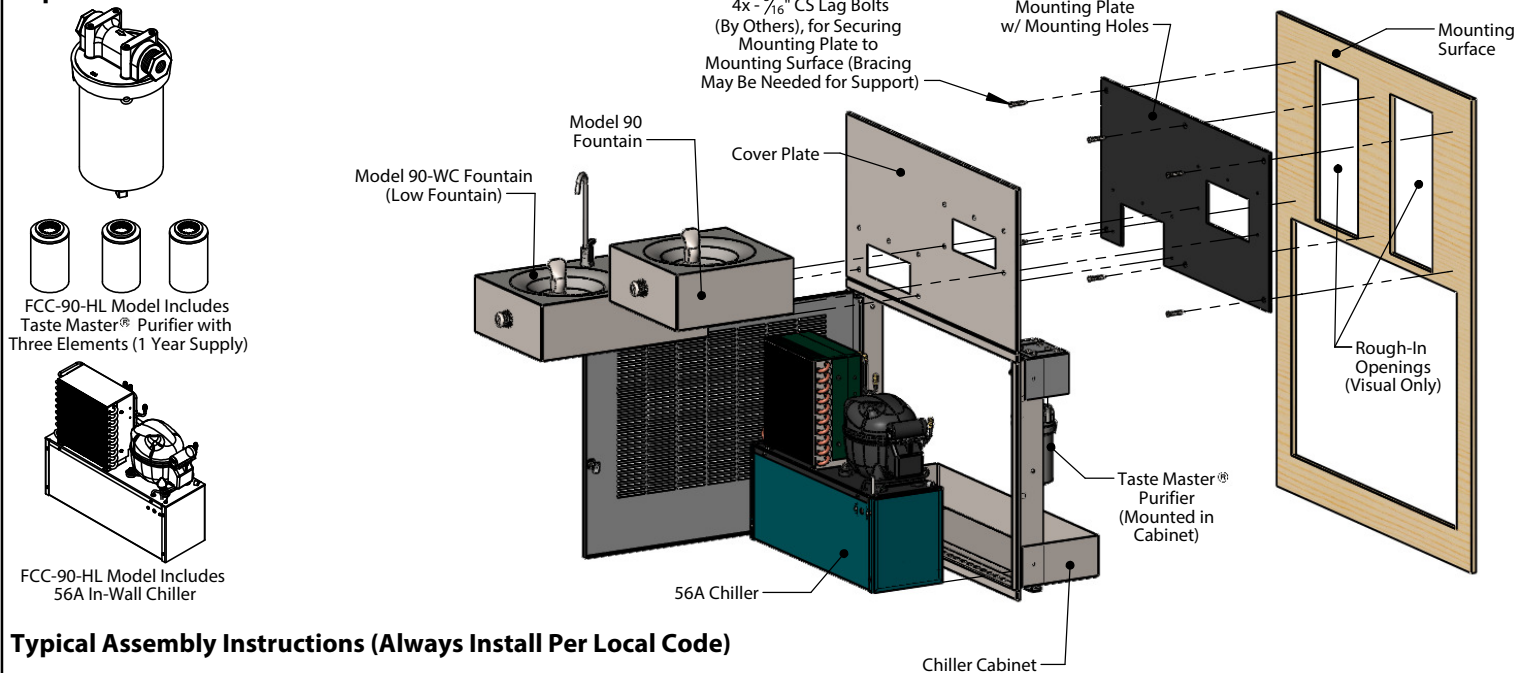
Model	Height	Width
Standard Plate	15 1/2"	10"
Bottle Filler Plate	20 1/2"	10"

Approximate Chiller Cabinet Rough-In Dimensions (outlined, left)

Model	Height	Width
Standard Panel	23"	31"

All views shown are for typical installation of Model FCC-90-HL. Views, dimensions and diagrams may change for specific installation requirements.

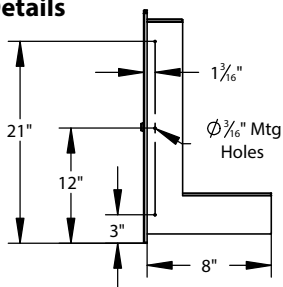
Exploded On-Wall Installation View FCC-90-HL



Typical Assembly Instructions (Always Install Per Local Code)

1. Cut fountain rough openings per install requirements (rough opening example shown above) and install blocking or fixture carriers as required to support the drinking fountain mounting plate and chiller cabinet in a minimum 13" deep wall.
2. Cut a separate rough opening extending below the fountain mounting plate, for the chiller cabinet (table top-right).
3. Run drain piping to center of openings on mounting plate (dimensioned above), and install drain trap(s) in wall per local code.
4. Run supply water line to mounted Taste Master® filter housing.
5. If optional vandal bottle filler is included with order, attach piping assembly provided by Filtrine to the back side of the mounting plate with flare connection.
6. Fasten mounting plate to mounting surface over rough opening with 5/16" countersunk lag bolts with bottom of plate 26" above the floor to meet ADA fountain height requirement of 34 1/4" to the bubbler spout.
7. Install chiller cabinet in rough opening below the mounting plate using 3/8" holes in the side flange of the cabinet. Chiller cabinet should be located approx. 1/4" below and centered with the mounting plate above.
8. Install cover plate over mounting plate, and secure each fountain with included bolts and slide vandal proof bottle filler arm (if ordered) over the horizontal tongue protruding from the mounting plate and fasten arm with set screws pushing slightly against the cover plate.
9. Connect drain line to slip coupling at each fountain and connect supply lines to chiller, purifier and fountains.

Chiller Cabinet Mounting Details



Typical Drain Plumbing Detail (In-Wall Plumbing Provided By Others, Install Per Local Code)

