



# Model 107-16-HL Non-Recessed Fountain

## DESCRIPTION

RECEPTORS: 16" diameter with 1/8" radius rolled edges and concealed seams– in 16 gauge stainless steel.  
 UNDERBOWLS: raised from support arms by 1/2" collar to provide an aesthetically pleasing profile.  
 SUPPORT ARMS: 4 3/8" wide by 2 5/8" high – in 14 gauge stainless steel. Overall fountain height 3". One fountain to be 6" lower than the other fountain (specify right or left to be low).  
 MOUNTING PLATE: 1/4" steel plate 35 1/2" wide by 15 1/2" high for vertical strength, with 3/8" steel tongue projecting into support arm for maximum horizontal stability.

## CONSTRUCTION OPTIONS

MATERIAL: Bowl & Support Arm  
 \_\_\_ Stainless Steel \_\_\_ Bronze

FINISH: Bowl & Support Arm  
 \_\_\_ #4 Satin \_\_\_ #8 Mirror \_\_\_ Statuary Bronze

Fixture & Drain  
 \_\_\_ #4 Satin \_\_\_ #8 Mirror \_\_\_ Statuary Bronze

FIXTURES: (finish to match)  
 \_\_\_ S/S Bubbler with separate "Soft Touch" valve  
 \_\_\_ S/S Bubbler with integral push-button valve  
 \_\_\_ S/S Bubbler with lever handle valve (1or 2)  
 \_\_\_ S/S Bubbler with "No Hands" photocell in cover plate

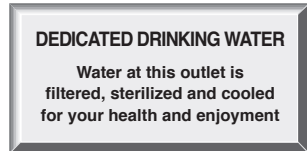
COVER PLATE:  
 36" x 16" with matching finish.

LOWER FOUNTAIN: To be located on...  
 \_\_\_ LEFT \_\_\_ RIGHT

## READY-TO-ISSUE PERFORMANCE SPECS

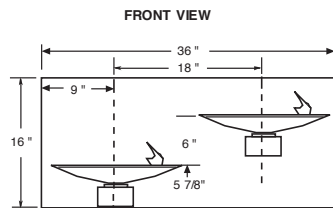
Supply and install where shown on plans, dual wall mounted circular drinking fountains. Receptors to be 16" with 3/8" radius rolled edges, integral drains and concealed seams. Underbowls to be raised from support arms by 1/2" collar to provide an aesthetically pleasing profile. Support arms not to exceed 4 3/8" wide by 2 5/8" high. Overall fountain height not to exceed 3". Bowls to be manufactured of 16 ( ), hand polished to a ( ) finish with matching 14 gauge support arms. Bubblers to have ( ) finish with ( ) valves. All water contact surfaces shall be lead-free, stainless steel (brass bubbler and flow regulator not acceptable). Receptor on ( ) shall be 6" lower than other receptor. Fountain shall include mounting plate with projecting 3/8" steel tongues to insure rigidity of fountain and 36" x 16" matching cover plate with hinged access panel. Fountain shall have no nameplate, lettering or symbols of any kind and carry a Lifetime Warranty. Fountain shall be Model 107-16-HL as manufactured by Filtrine Mfg. Co. Keene, NH USA.

**MODEL 107-16-HL MEETS OR EXCEEDS ADA REQUIREMENTS** for spout height, spout location, controls and clearances as specified in the Federal Register and is covered by a Lifetime Warranty. Please note that many states now permit the use of a single 36" high fountain to serve both handicapped and non-handicapped.



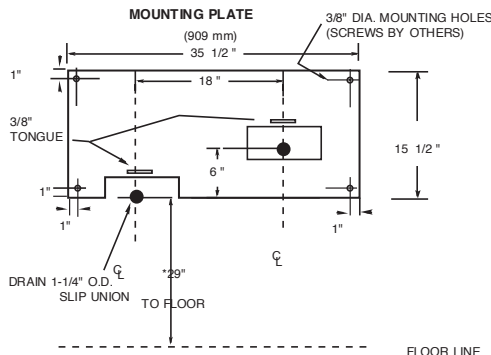
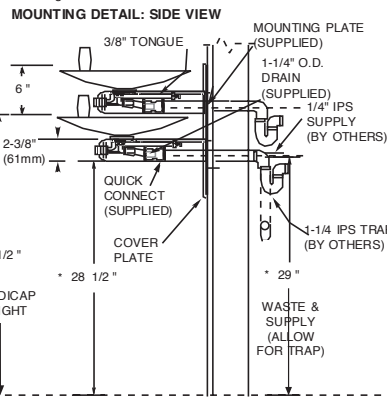
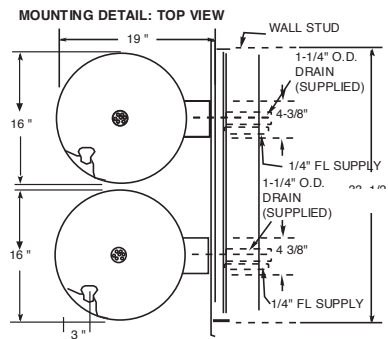
This plaque (shown smaller than actual size) will be supplied free-of-charge to fountains connected to a Dedicated Drinking Water System... will your next project carry this assurance?

## INSTALLATION DRAWINGS



\*WHEN INSTALLING THIS UNIT, LOCAL, STATE OR FEDERAL CODES SHOULD BE ADHERED TO FOR INSTALLATION HEIGHTS OTHER THAN SHOWN. DIMENSIONS MARKED (\*) MUST BE ADJUSTED ACCORDINGLY.

HOLD ROUGH-IN DIMENSIONS ±1/2"  
 DRAIN DROP 1/4" (6.3 mm) PER FOOT (399 mm)



FILTRINE Mfg. Co. 15 Kit St. Keene, NH 03431 USA  
 800-930-3367 • 603-352-5500 • FAX 603-352-0330  
 WEB: www.filtrine.com • Email: cool@filtrine.com

**107-16-HL**  
 Non-Recessed Fountain

FORM  
 1235  
 11.01.05

# Model 107-16-HL Non-Recessed Fountain

## MODEL 107-16-HL NON-RECESSED FOUNTAIN

**Receptors:** 16" diameter with integral drains and seamless double bowl design with welded rims, ground and polished to a finely tapered edge with 1/32" radius. — in 16 gauge. **Underbowls:** raised from support arms by 1/2" collars to provide an aesthetically pleasing profiles. **Support arms:** 4 3/8" wide by 2 5/8" high—in 14 gauge. Overall fountain height 3". One fountain to be 6" lower than the other fountain (specify right or left to be low.) **Mounting Plate:** 1/4" steel plate 15 3/4" high for vertical strength, 35 3/4" wide with 3/8" steel tongues projecting into support arms for maximum horizontal stability.

### CONSTRUCTION OPTIONS

#### MATERIAL:

**Bowl & Support Arm**  Stainless Steel  Bronze

#### FINISH: Bowl & Support Arm

#4 Satin  #8 Mirror  Statuary Bronze

#### Fixture & Drain

Satin  Mirror  Statuary (bronze only)

#### FIXTURES: (finish to match)

- S/S Bubbler with separate "Soft Touch" valve
- S/S Bubbler with integral push-button valve
- S/S Bubbler with lever handle valve (1 or 2)
- S/S Bubbler with rocker arm valve
- S/S Bubbler with "No Hands" photo cell in cover plate.

#### MOUNTING PLATE:

- IN-WALL: See under description above
- ON-WALL: As above with 36" x 16" matching cover plate

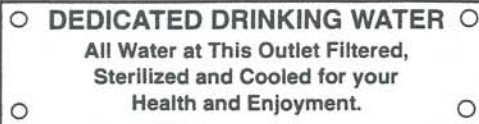
## READY-TO-ISSUE PERFORMANCE SPECS

All bidders must meet the following minimum standards.

Supply and install where shown on plans, dual wall mounted circular drinking fountains. Receptors to be 16" diameter with integral drains and seamless double bowl design with welded rims, ground and polished to a finely tapered edge with 1/32" radius. Underbowls to be raised from support arms by 1/2" collar to provide an aesthetically pleasing profile. Support arms not to exceed 4 3/8" wide by 2 5/8" high. Overall fountain height not to exceed 3". Bowls to be manufactured of 16 gauge ( ), hand polished to a ( ) finish with matching 14 gauge support arms. Bubblers to have matching finish with ( ) valve. All water contact surfaces shall be lead-free, stainless steel (brass bubbler and flow regulator not acceptable). Receptor on ( ) shall be 6" lower than other receptor. Fountain shall include mounting plate with projecting 3/8" steel tongues to insure rigidity of fountain. Fountain shall have no nameplate, lettering or symbols of any kind, and carry a Lifetime Warranty.

## MODEL 107-16-HL MEETS OR EXCEEDS ADA

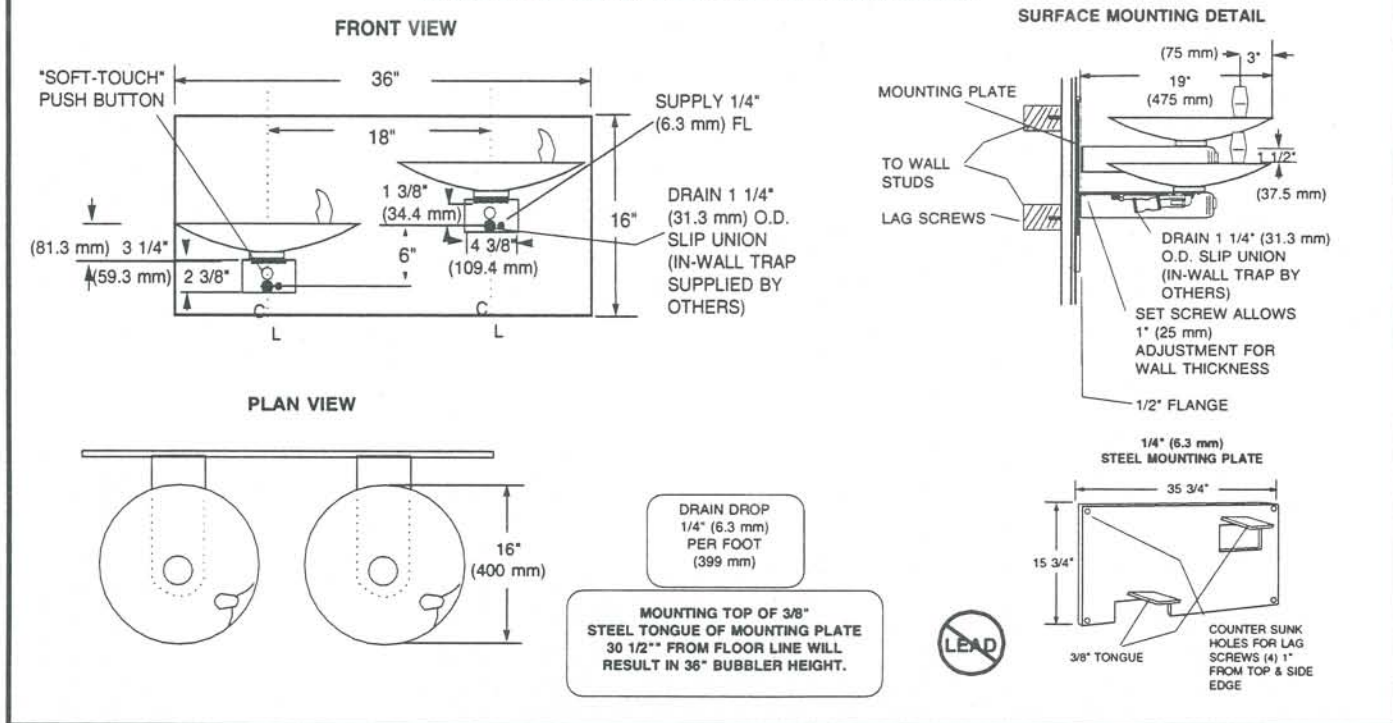
Requirements for spout height, spout location, controls and clearances as specified in the Federal Register and is covered by a Lifetime Warranty. **Please note that many states now permit use of a single 36" high fountain to serve both handicapped and non-handicapped users.**



FOUNTAINS PROVIDED WITH PURIFIED, CHILLED WATER FROM OUR DEDICATED LINE WILL BE PROVIDED WITH THIS PLATE FREE OF CHARGE

(Will your next building carry this assurance?)

## INSTALLATION DRAWINGS



FILTRINE MANUFACTURING COMPANY • 15 Kit Street, Keene, NH 03431

Ph: (603) 352-5500 • Fax: (603) 352-0330 • Email: cool@filtrine.com

www.filtrine.com