

# FILTRINE

Model 107-14-HL  
Non-Recessed Fountain



Model 107-14-HL Non-Recessed Fountain shown in 16 gauge stainless steel hand polished to a #4 satin finish with matching cover plate and mirror finish push button bubbler and drain.

FORM 1215

# Model 107-14-HL Non-Recessed Fountain

## MODEL 107-14-HL NON-RECESSED FOUNTAIN

**Receptors:** 14" diameter with 1/8" radius rolled edges and concealed seams— in 16 gauge. **Underbowls:** raised from support arms by 1/2" collar to provide an aesthetically pleasing profile. **Support arms:** 4 3/8" wide by 2 5/8" high—in 14 gauge. Overall fountain height 3". One fountain to be 6" lower than the other fountain (specify right or left to be low.) **Mounting Plate:** 1/4" steel plate 15 1/2" high for vertical strength, 35 1/2" wide with 3/8" steel tongue projecting into support arm for maximum horizontal stability.

### CONSTRUCTION OPTIONS

#### MATERIAL: Bowl & Support Arm

- Stainless Steel       Bronze

#### FINISH: Bowl & Support Arm

- #4 Satin       #8 Mirror       Statuary Bronze

#### Fixture & Drain

- Satin       Mirror       Statuary (bronze only)

#### FIXTURES: (finish to match)

- S/S Bubbler with separate "Soft Touch" valve  
 S/S Bubbler with integral push-button valve  
 S/S Bubbler with lever handle valve (1 or 2)  
 S/S Bubbler with rocker arm valve  
 S/S Bubbler with "No Hands" photo cell in cover plate.

#### MOUNTING PLATE:

- IN-WALL: See under description above  
 ON-WALL: As above with 32" x 16" matching cover plate

## READY-TO-ISSUE PERFORMANCE SPECS

All bidders must meet the following minimum standards.

Supply and install where shown on plans, dual wall mounted circular drinking fountains. Receptors to be 14" with 3/8" radius rolled edges, integral drains and concealed seams. Underbowls to be raised from support arms by 1/2" collar to provide an aesthetically pleasing profile. Support arms not to exceed 4 3/8" wide by 2 5/8" high. Overall fountain height not to exceed 3". Bowl to be manufactured of 16 gauge ( ), hand polished to a ( ) finish with matching 14 gauge support arms. Bubblers to have matching finish with ( ) valves. All water contact surfaces shall be lead-free, stainless steel (brass bubblers and flow regulator not acceptable). Receptor on ( ) shall be 6" lower than other receptor. Fountain shall include mounting plate with projecting 3/8" steel tongues to insure rigidity of fountain. Fountain shall have no nameplate, lettering or symbols of any kind, and carry a Lifetime Warranty.

### MODEL 107-14-HL MEETS OR EXCEEDS ADA

Requirements for spout height, spout location, controls and clearances as specified in the Federal Register and is covered by a Lifetime Warranty. Please note that many states now permit use of a single 36" high fountain to serve both handicapped and non-handicapped users.

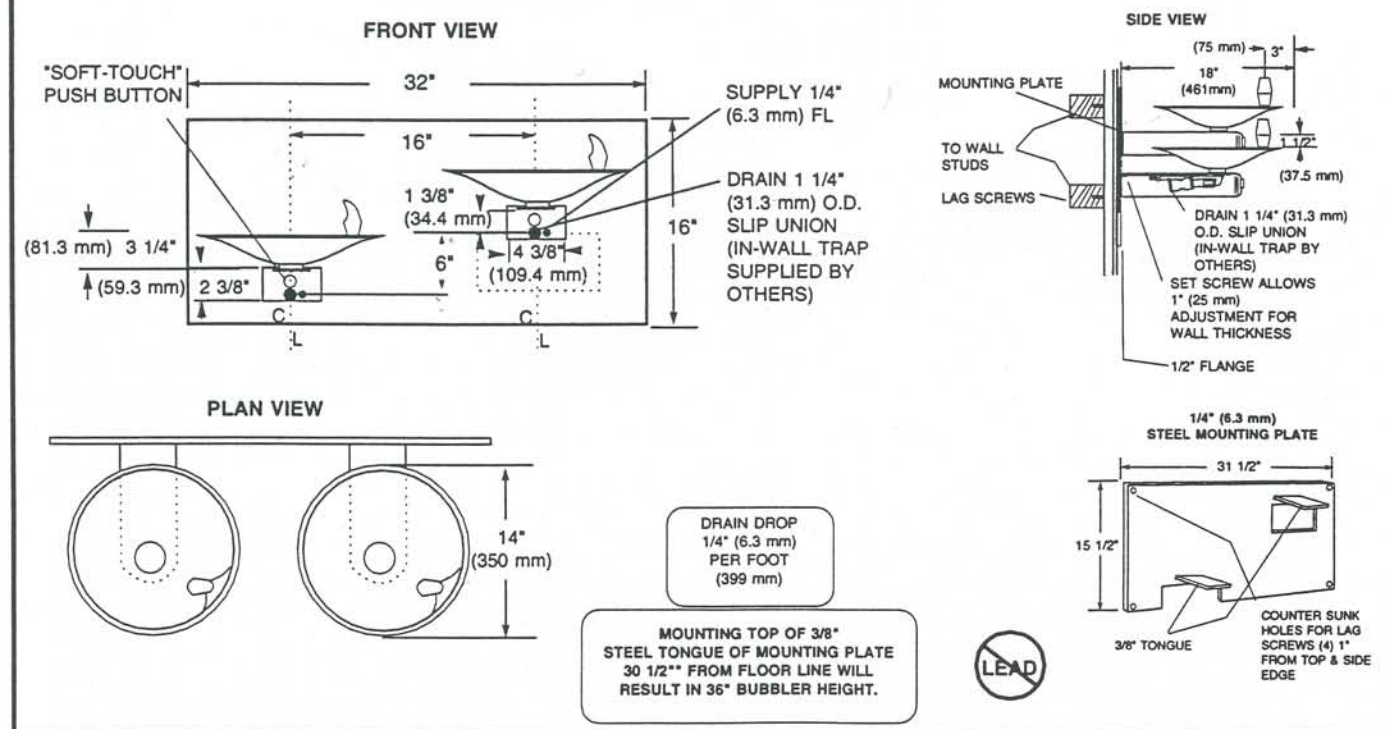
### DEDICATED DRINKING WATER

All Water at This Outlet Filtered,  
Sterilized and Cooled for your  
Health and Enjoyment.

FOUNTAINS PROVIDED WITH PURIFIED, CHILLED WATER FROM OUR DEDICATED LINE WILL BE PROVIDED WITH THIS PLATE FREE OF CHARGE

(Will your next building carry this assurance?)

## INSTALLATION DRAWINGS



FILTRINE MANUFACTURING COMPANY • 15 Kit Street, Keene, NH 03431

Ph: (603) 352-5500 • Fax: (603) 352-0330 • Email: cool@filtrine.com

www.filtrine.com