

FILTRINE

Model 121-HL Deck Fountain



Model 121-HL Deck Fountain with 16 gauge mirror finish bronze bowls and “Soft-Touch” push-buttons. Deck is crafted from marble. Dual height bowls offer convenience for everyone, regardless of height, while satisfying ADA requirements.

FORM 1111

SPECIFICATIONS Model 121-HL

Supply and install as detailed on plans a pre-fabricated deck-type drinking fountain. Deck to be []"W x []"D (min. 12"W x 12"D). Front skirt to be []" (6" min.). Deck to be supplied with (1) 14" drop-in bowl and (1) 14" bowl mounted on a small pedestal to be 6" above deck top. Each bowl to have a 1 1/4" O.D. quick return drain, integral drain in bowl and matching fixture.

MATERIAL:(Deck)

- Marble (specify)
 - Marble Aggregate (specify)
 - Polymer Aggregate (specify)
- Cut out to be
- []" on center from each other
 - []" from left end (1" minimum)
 - []" from right end (1" minimum)
 - []" from back (1" minimum)
 - []" from front (1" minimum)

BOWL & ACCESSORIES:

MATERIAL:

BOWL: 16 ga. Stainless Steel Bronze

FIXTURE: Chrome Plated Bronze

FINISH:

Satin Mirror Statuary Bronze

FIXTURE:

- Bubblers with integral push-button valve
- Bubblers with separate "Soft Touch" valve (shown)
- Bubblers with "No Hands" photo cell to be mounted in back splash.
- Gooseneck glass filler with "Soft Touch" valve in place of bubbler

ACCESSORIES:

- Matching back splash []" high
- Matching side splash []" high



MODEL 121-HL CAN BE MODIFIED TO MEET A.D.A. REQUIREMENTS AS STATED BELOW

4.15.2 SPOUT HEIGHT: Spouts shall be no higher than 36" measured from the floor or ground surfaces to the spout outlet.

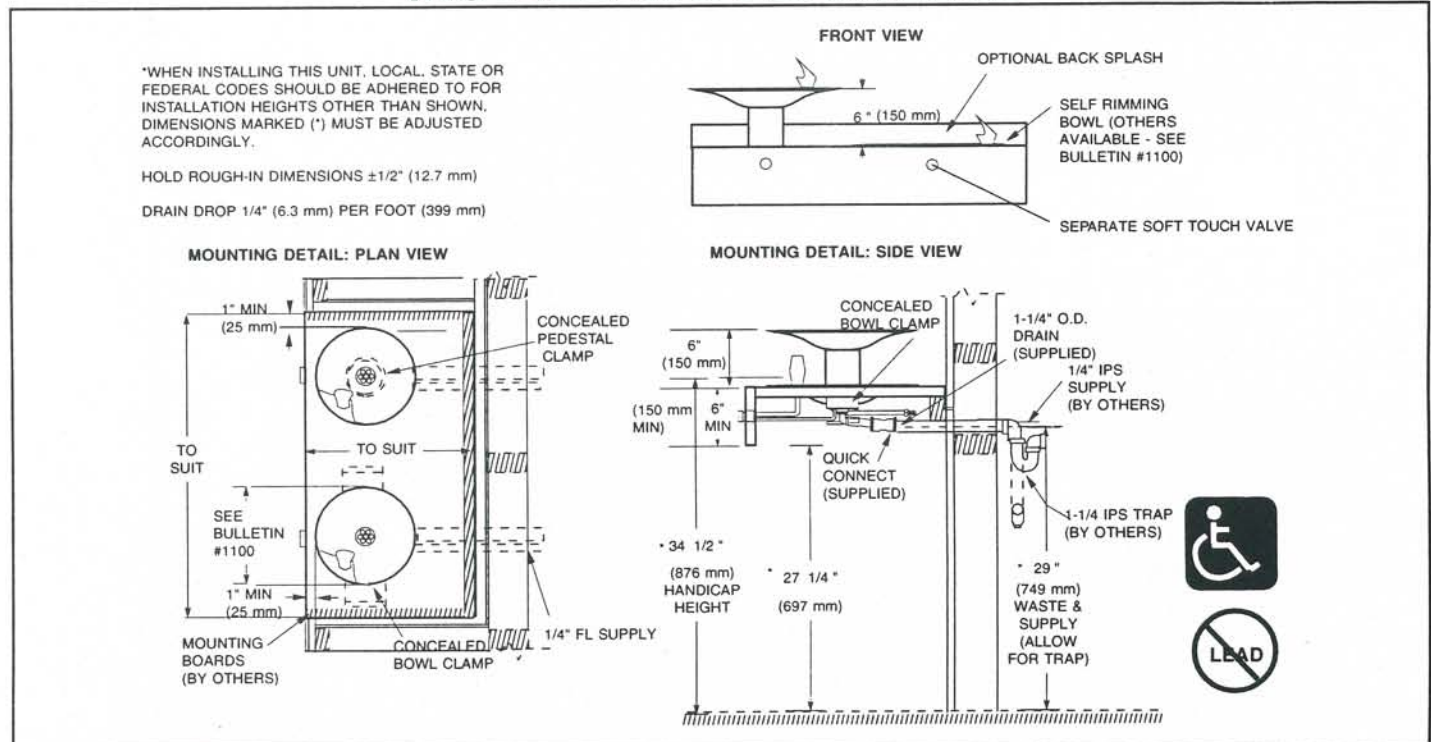
4.15.3 SPOUT LOCATION: The spouts of drinking fountains and water coolers shall be at the front of the unit and shall direct the water flow in a trajectory that is parallel or nearly parallel to the front of the unit. On an accessible drinking fountain with a round or oval bowl, the spout must be positioned so the flow of water is within 3" of the front edge of the fountain.

4.15.4. CONTROLS: Unit controls shall be front mounted or side mounted near the front edge.

4.15.5.1 CLEARANCES: Wall and post-mounted cantilevered units shall have a clear knee space between the bottom of the apron and the floor or ground at least 27" high, 30" wide and 17" to 19" deep. Such units shall also have a minimum clear floor space 30" by 48" to allow a person in a wheelchair to approach the unit facing forward.

Federal Register, July 28, 1991
Rules and Regulations

INSTALLATION DRAWINGS



FILTRINE MANUFACTURING COMPANY

Keene, NH 03431 • (603) 352-5500 • FAX (603) 352-0330